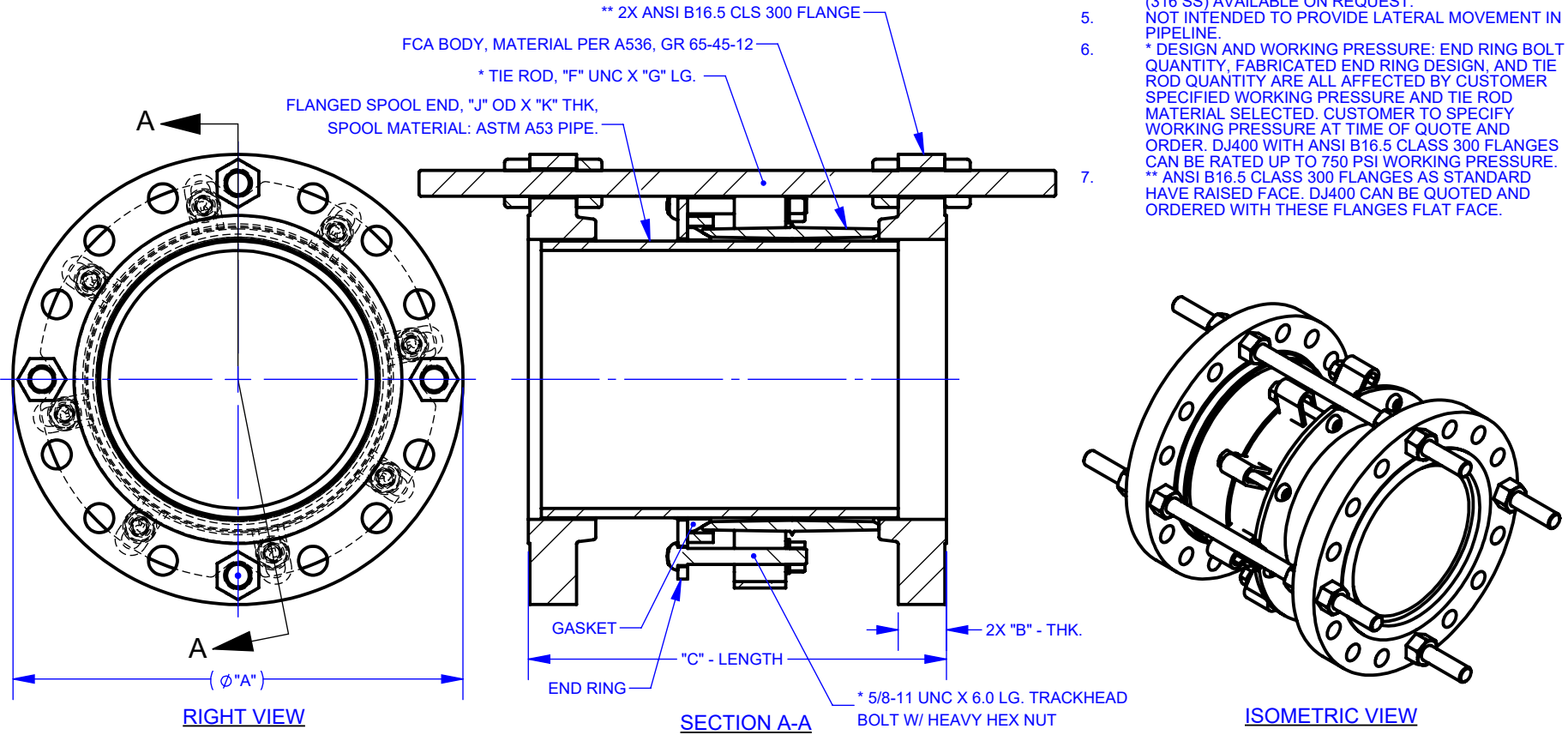


NOM. SIZE	DIMENSIONS					TIE RODS		SPOOL		APPROX. WEIGHT (LBS.)
	FLG. OD	FLG. THK.	C-LENGTH			SIZE (UNC)	LENGTH	OD	PIPE THK	
	A	B	NOM.	MIN.	MAX.	F	G	J	K	
3	8.25	1.12	14.25	12.75	15.75	3/4" - 10	20.75	3.50	0.22	65
4	10.00	1.25	14.50	13.00	16.00	3/4" - 10	21.25	4.50	0.24	85
6	12.50	1.44	14.75	13.25	16.25	3/4" - 10	22.00	6.63	0.28	135
8	15.00	1.62	15.75	14.25	17.25	7/8" - 9	23.50	8.63	0.32	195
10	17.50	1.87	16.25	14.75	17.75	1" - 8	24.75	10.75	0.37	290
12	20.50	2.00	17.00	15.50	18.50	1-1/8" - 7	26.25	12.75	0.38	410

REVISIONS			
REV.	DESCRIPTION	DATE	EDITOR
R0	INITIAL RELEASE	12/6/24	MSL

- NOTES:
- ALL MATERIAL ASTM A36 STEEL OR EQUAL UNLESS OTHERWISE SPECIFIED.
 - COATING: NSF61 CERTIFIED FUSION BONDED EPOXY LINED & COATED.
 - FASTENER OPTIONS: HSLA PER ASTM A588 IS STANDARD, STAINLESS STEEL TYPE 304 OR 316 AVAILABLE UPON REQUEST.
 - TIE ROD MATERIAL OPTIONS: ASTM A193 GR B7 (ALLOY) IS STANDARD, GR B8 (304 SS) OR GR B8M (316 SS) AVAILABLE ON REQUEST.
 - NOT INTENDED TO PROVIDE LATERAL MOVEMENT IN PIPELINE.
 - * DESIGN AND WORKING PRESSURE: END RING BOLT QUANTITY, FABRICATED END RING DESIGN, AND TIE ROD QUANTITY ARE ALL AFFECTED BY CUSTOMER SPECIFIED WORKING PRESSURE AND TIE ROD MATERIAL SELECTED. CUSTOMER TO SPECIFY WORKING PRESSURE AT TIME OF QUOTE AND ORDER. DJ400 WITH ANSI B16.5 CLASS 300 FLANGES CAN BE RATED UP TO 750 PSI WORKING PRESSURE.
 - ** ANSI B16.5 CLASS 300 FLANGES AS STANDARD HAVE RAISED FACE. DJ400 CAN BE QUOTED AND ORDERED WITH THESE FLANGES FLAT FACE.

FOR CUSTOMER USE



<p>PROPRIETARY NOTICE</p> <p>THIS DRAWING CONTAINS CONFIDENTIAL PROPRIETARY INFORMATION AND IS THE PROPERTY OF ROMAC IND., INC. IT IS TO BE USED ONLY FOR THE PURPOSE FOR WHICH IT WAS SUBMITTED AND SHALL NOT HAVE ITS INFORMATION DISCLOSED OR REPRODUCED IN WHOLE OR IN PART FOR ANY PURPOSE WITHOUT PRIOR WRITTEN PERMISSION OF ROMAC IND., INC.</p>	<p>UNLESS OTHERWISE SPECIFIED</p> <ul style="list-style-type: none"> DIMENSIONS ARE IN INCHES DRAWING NOT TO SCALE. 	<p>SIGNATURES</p> <p>DRAWN Mike Lundquist</p>	<p>DATE</p> <p>12/06/2024</p>	
		<p>APPROVED Derek Sorenson</p>	<p>1/6/2025</p>	
		<p>THIRD ANGLE PROJECTION</p>		

<p>ROMAC INDUSTRIES INC.</p>				
<p>TITLE DJ400 - 3-12 INCH - ANSI B16.5 CLS 300 - GENERAL OUTLINE - CUSTOMER DRAWING</p>				
<p>DWG. NO. CAD-051511</p>	<p>SIZE A</p>	<p>REV. NO. R0</p>	<p>SCALE NTS</p>	<p>SHEET 1 OF 1</p>
<p>AUTHOR: Derek Sorenson</p>				

RELEASED