



**Transmate**  
a Division of Romac Industries, Inc.

# TAPMATE DRY TAP™

## DRY DRILLING & TAPPING MACHINE

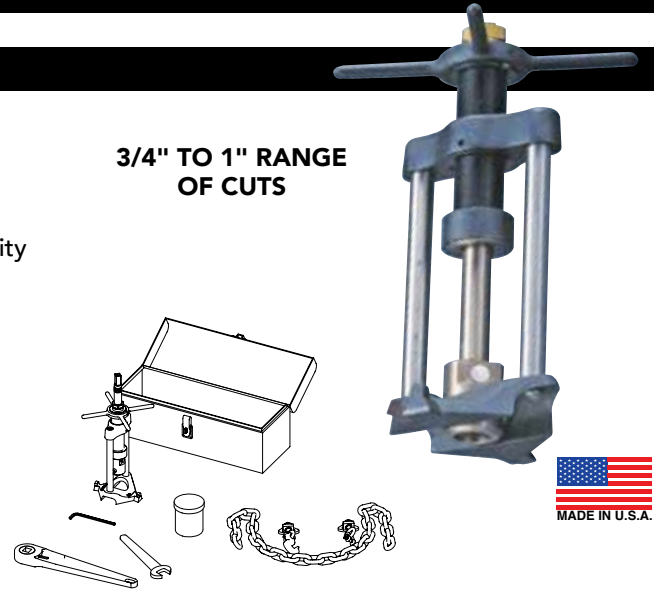
### MATERIAL SPECIFICATIONS

- Weighs approximately 28 lbs.
- Easy to use, with or without power drive
- 3/4" through 1" drill/taps through all types of mains
- Drilling shaft is completely supported at two points for rigidity
- Uses B-1 drill/tap holder and accessories
- Lightweight and sturdy construction
- Conforms to pipe sizes 3" or larger (Extra chain lengths required for 18" mains or larger)

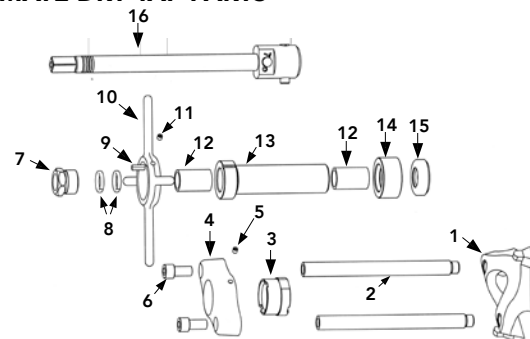
**TO ORDER:**

1. Order Base Machine.
2. Order Drill/Taps per cut size, thread type and tap size.
3. Order Power Option if desired.

3/4" TO 1" RANGE OF CUTS



**TAPMATE DRY TAP PARTS**

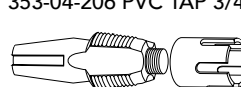


| ITEM NUMBER   | DESCRIPTION  | LIST PRICE        |
|---|--|-------------------|
| <b>357-00</b>   | <b>TapMate Dry Tap</b>   | <b>\$2,552.42</b> |
| 353-60-11   | Included with Dry Tap Machine: Ratchet Wrench (5/8" sq. drive)   | included          |
| 357-55  | Delta ring chain assembly  | included          |
| 353-11-1  | Drill Tap Holder   | included          |
| 353-60-22   | 1 5/16" Open End Wrench  | included          |
| 353-60-32   | 1/4" Allen Wrench  | included          |
| 353-10-1  | Tapping Compound   | included          |
| 355-61  | Tool Box   | included          |
| <b>OPTIONAL STRAPS AVAILABLE</b>                        |  |                   |
| 357-66  | 48" Strap (includes Strap Ratchet)                               | 209.51            |
| 357-100   | Long Strap (for 14" to 24" diameter mains)                       | 130.98            |
| 356-11  | Chain, Round Link  | 71.68             |
| <b>PVC DRILL AND TAPS (require both tap and cutter)</b> |  |                   |
| <b>For PVC Only</b>                                     |  |                   |
| 353-04-206  | 3/4" PVC Tap: 5956 (AWWA CC thread)                              | 436.39            |
| 355-01-210  | 3/4" PVC Cutter - 5957-3/4"                                      | 311.50            |
| 353-04-208  | 1" PVC Tap: 5956 (AWWA CC thread)                                | 504.54            |
| 353-01-206  | 1" PVC Cutter: 5975-1 (makes 1 1/4" hole)                        | 312.24            |
| <b>DRILL / TAPS</b>                                     |  |                   |
| <b>For Ductile, Cast Iron &amp; A/C</b>                 |  |                   |
| 353-02-106  | 3/4" Iron Pipe Drill/Tap: 5951                                   | 457.16            |
| 353-02-108  | 1" Iron Pipe Drill/Tap: 5951                                     | 484.87            |
| 353-02-206  | 3/4" AWWA CC Drill/Tap: 5952                                     | 323.53            |
| 353-02-208  | 1" AWWA CC Drill/Tap: 5952                                       | 442.36            |
| <b>POWER OPTION</b>                                     |  |                   |
| 373-357   | Ridgid 690 Electric Drive w/ 5/8" sq. Drive Adapter See pg TM-28 | 3,075.52          |
| 370-70  | GF-15 Ground Fault Interrupter Plug (req.d)                      | 131.61            |
| <b>TAPPING COMPOUND</b>                                 |  |                   |
| 353-10-1  | Tapping Compound   | 33.90             |
| 353-10-3  | Tapping Compound/ Case (12)                                      | 390.95            |

| REF. NO. | ITEM NUMBER | DESCRIPTION                 | LIST PRICE |
|----------|-------------|-----------------------------|------------|
| 1        | 357-08      | Saddle                      | \$178.24   |
| 2        | 357-35      | Column                      | 77.86      |
| 3        | 357-28-1    | Top Yoke Insert             | 138.09     |
| 4        | 357-28      | Top Yoke                    | 307.18     |
| 5        | 351-23-512  | Lead Tube Set Screw         | 1.32       |
| 6        | 357-35-51   | Column Bolts (Qty 2)        | ea 7.24    |
| 7        | 353-26-39   | Head Gland Nut              | 67.46      |
| 8        | 353-26-573  | Head Gland Packing (Qty 2)  | ea 9.46    |
| 9        | 351-24-66   | Lead Nut Key                | 5.19       |
| 10       | 351-29-1    | Handle                      | 147.87     |
| 11       | 351-51-2    | Arbors & Handle Set Screw   | 1.32       |
| 12       | 353-26-62   | Head Bronze Bushing (Qty 2) | ea 26.95   |
| 13       | 357-43      | Feed Screw Complete         | 366.87     |
| 14       | 357-22      | Bearing Housing             | 131.51     |
| 15       | 357-56      | Thrust Bearing              | 28.75      |
| 16       | 353-11-1    | Drill/Tap Holder Assembly   | 656.56     |

**CUTTING DRILL/TAPS**

355-01-210 PVC CUTTER 3/4"  
353-04-206 PVC TAP 3/4" CC



353-01-206 PVC CUTTER 1"  
353-04-208 PVC TAP 1" CC



IRON PIPE DRILL / TAP  
AWWA CC DRILL / TAP

TRANSMATE