

FIRE HYDRANT VALVE GASKETS



MATERIAL SPECIFICATIONS

GASKET: SBR per ASTM D 2000 MBA 910, compounded for water service.



NSF61 certified upon request.

Certified to
NSF/ANSI GI & 372



NOM. PIPE SIZE	CATALOG NUMBER	OUTSIDE DIAMETER	COMPATIBLE WITH	APPROX. WEIGHT (lbs.)	LIST PRICE
5 1/4"	RV - 588	5.91"	Vogt - 55	0.6 #	\$58.51
	RC - 601	6.01"	Clow Medallion	1.4 #	58.51
	RC - 585	5.85"	Clow #24	0.6#	58.51
	RD - 596	5.96"	R.D. Wood Special	1.1 #	58.51
	RE - 640	6.40"	Eddy	0.6 #	58.51
	RI - 585	5.85"	Iowa	0.7 #	58.51
	RM - 588	5.88"	Mueller	1.3 #	58.51
	RMH - 580	5.80"	M&H, Dresser 300, 500 129T	1.1 #	58.51
	RTC - 610	6.10"	Traverse City	0.6 #	58.51
5 1/2"	RAD - 567	5.67"	American Darling	1.2 #	58.51
	RMA - 625	6.25"	Matthews	1.3 #	58.51
5"	RV - 700	6.95"	Vogt - 25	2.0 #	58.51
	RR - 573	5.73"	Rensselaer	1.1 #	58.51
-	RG - 563	5.63"	Greenburg	1.2 #	58.51
	RR - 165	1.65"	Rensselaer (Drip Valve Rubber)	0.1 #	31.16
5"	RK - 542	5.42"	Kupferle	1.2 #	58.51

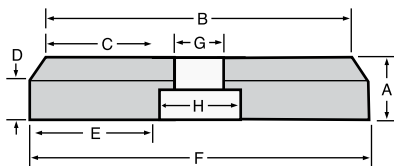
TO ORDER: Specify catalog number.

MISCELLANEOUS

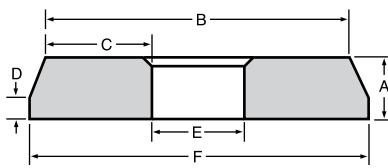


FIRE HYDRANT VALVE GASKET DIMENSIONS

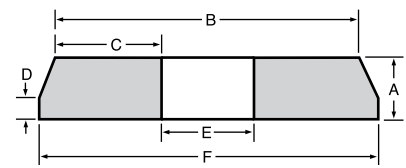
CATALOG NUMBER	COMPATIBLE WITH	A	B	C	D	E	F	G	H	I
RC - 601	Clow Medallion	1.12"	5.64"	2.50"	0.80"	2.14"	6.01"	1.00"	1.74"	—
RC - 585	Clow #24	0.87"	5.29"	0.87"	0.27"	3.28"	5.87"	—	—	—
RD - 596	R.D. Wood Special	1.13"	5.25"	1.58"	0.38"	2.04"	5.54"	—	—	—
RV - 588	Vogt 55	1.153"	5.262"	2.051"	0.925"	1.184"	5.908"	—	—	—
RV - 700	Vogt 25	1.268"	6.224"	1.970"	0.525"	2.239"	6.946"	—	—	—
RE - 640	Eddy	0.92"	1.38"	0.48"	5.25"	5.97"	6.38"	3.58"	0.08"	5.13"
RI - 585	Iowa	0.87"	5.13"	1.20"	0.30"	0.80"	5.86"	3.28"	2.74"	—
RM - 588	Mueller	1.16"	5.29"	2.14"	0.62"	0.92"	5.87"	—	—	—
RMH - 580	M&H, Dresser 300, 500 129T	1.06"	5.34"	2.13"	0.54"	1.04"	5.79"	—	—	—
RTC - 610	Traverse City	0.80"	0.46"	0.15"	6.07"	0.73"	5.20"	3.71"	—	—
RAD - 567	American Darling	1.02"	5.27"	2.13"	0.44"	1.02"	0.10"	1.23"	5.67"	—
RMA - 625	Matthews	1.11"	5.52"	1.74"	0.41"	2.00"	6.19"	—	—	—
RR - 573	Rensselaer	1.30"	5.09"	1.24"	0.86"	2.54"	5.70"	—	—	—
RG - 563	Greenburg	1.37"	5.04"	1.23"	0.97"	2.51"	5.60"	—	—	—
RR - 165	Rensselaer (Drip Valve Rubber)	0.76"	1.63"	0.48"	0.24"	1.28"	0.07"	—	—	—
RK - 542	Kupferle	1.14"	4.96"	2.06"	0.62"	0.84"	5.41"	—	—	—



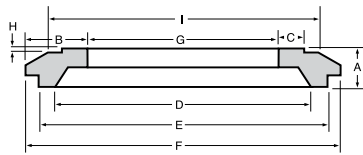
RC-601



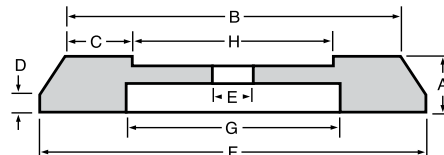
RC-585, RMA-625



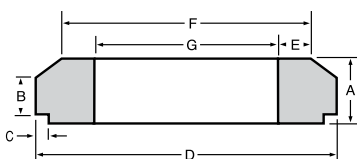
RD-596, RM-588, RMH-580, RR-573, RG-563, RK-542, RV-588, RV-700



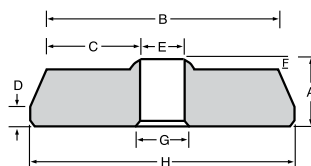
RE-640



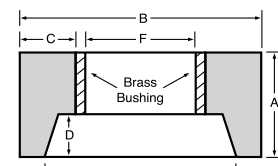
RI-585



RTC-610



RAD-567



RR-165

MISCELLANEOUS