

FTS435 FABRICATED STEEL TAPPING SLEEVE

ROMAC
INDUSTRIES, INC.

BODY & OUTLET: ASTM A 36 Steel Plate. Thickness and length along pipe determined by application pressure and size.

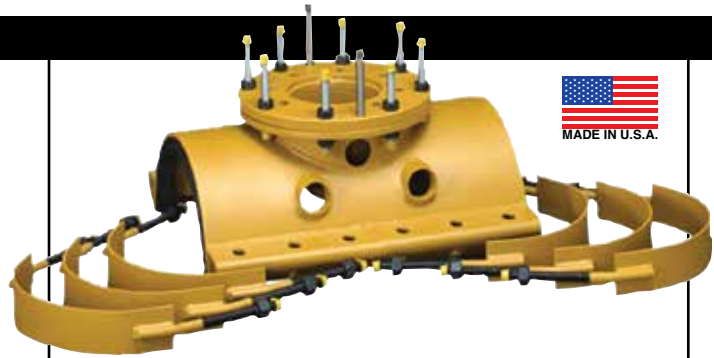
FLANGE: Steel Ring Flange, compatible with ANSI Class 125 and 150 bolt circles, are standard. Counterbored to fit tapping valve lip per MSS SP-60 where applicable. Other flange styles are available. Information about make of valve and size of cutter necessary for flanges 14" and larger.

STRAP ASSEMBLIES: High strength low alloy steel studs and nuts, meeting AWWA Standard C111. Straps are ASTM A 36 steel. Type 304 and 316 Stainless Steel stud, nut and strap material optional.

NECK GASKET: Gaskets are made from Styrene Butadiene Rubber (SBR) Compounded for water and sewer service in accordance with ASTM D 2000 3 BA715. Other compounds available for petroleum, chemical, or high temperature service.

GROUT SEAL: One inch square High density Nitrile foam. 1/2" hard rubber stops provided to maintain minimum space between body of tapping sleeve and O.D. of pipe.

COATINGS: Shop coat applied to parts for corrosion protection in transit. Fusion bonded epoxy is optional.



THE FTS435 FABRICATED TAPPING SLEEVE IS DESIGNED FOR CONCRETE STEEL CYLINDER PIPE.

THIS TYPE OF PIPE, TYPICALLY MANUFACTURED TO AWWA C300 OR C301 STANDARDS, IS A STEEL PIPE LINED WITH CONCRETE AND THEN WRAPPED WITH REINFORCING BARS AND COATED WITH CONCRETE.



NSF61 certified upon request.

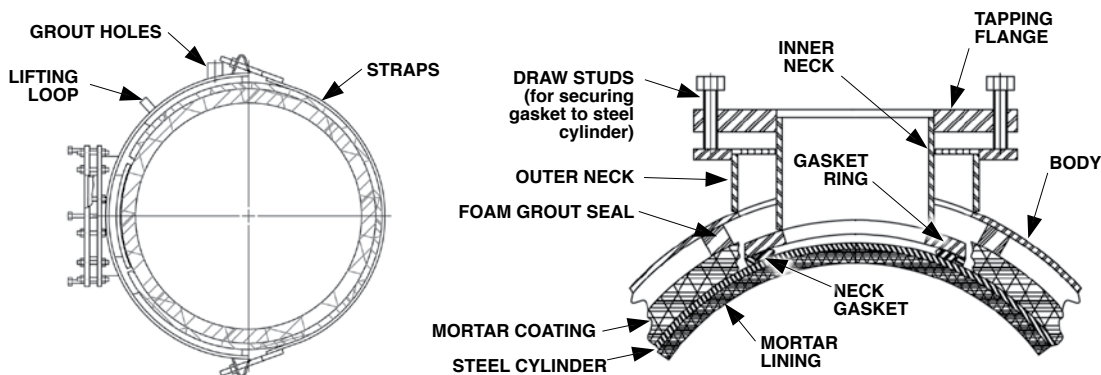
MEETS AWWA C223 & MANUAL M-9

INSTALLATION

The body of the sleeve is bolted onto the pipe (no welding is required) and the concrete inside the outlet is then chipped away along with removing the bars exposing the steel cylinder. The inner neck is then installed which seals on the steel cylinder OD. At this point you can safely make a tap into the concrete cylinder pipe and be assured of a watertight seal.

The FTS435 is available for all sizes of Concrete Cylinder pipe.

When ordering or requesting a quotation, please provide the Concrete pipe OD, Steel Cylinder OD, Outlet Flange size, Pipeline Pressure, Coating, and fastener requirements.



No Cancel, No Return Item.