

# FTS419 FABRICATED STEEL TAPPING SLEEVE



## MATERIAL SPECIFICATIONS

**BODY AND OUTLET NOZZLE:** Carbon steel, A-36 or equal.

**BOLTS AND NUTS:** Trackhead bolts, heavy hex nuts, 5/8" UNC rolled thread, high strength, low alloy, steel per AWWA C111. Optional stainless steel, type 304.

**GASKETS:** SBR per ASTM D 2000 MBA 710, compounded for water and sewer service use. Other compounds available on request.

**TEST PLUG:** 3/4" NPT type 304 stainless steel test plug.

**COATING:** Fusion epoxy 8-12 mil. lined and coated. Other coatings available. Romac packages sleeves to protect coating.

**FLANGE:** AWWA Class "D" plate flange, ANSI Class 150 drilling, proper recessing for tapping valves. Will accommodate tapping flanges per MSS SP-60.

**USE:** Recommended for PVC, steel, D.I., copper pipe.

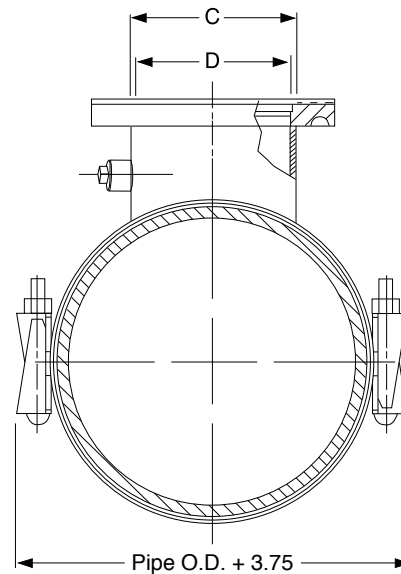
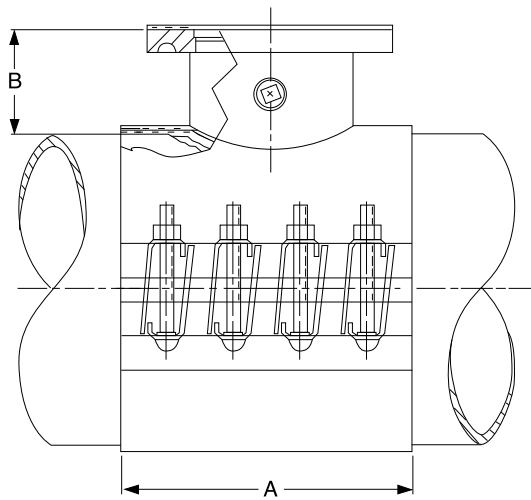
Meets requirements of MSS SP-124 and AWWA C223



NSF61 certified upon request.

MEETS  
AWWA C223

Certified to NSF/ANSI 61 & 272



FLANGE SIZE	A	B	C	D	BOLTS QTY: SIZE
3"	9"	5.18"	4.03"	3.06 - 3.54	6:5/8" x 6"
4"	9"	5.18"	5.03"	4.26 - 4.73	6:5/8" x 6"
6"	12"	5.18"	7.03"	6.42 - 6.73	8:5/8" x 6"
8"	15"	5.18"	9.03"	8.42 - 8.73	10:5/8" x 6"
10"	18"	5.50"	11.03"	10.73	12:5/8" x 6"
12"	24"	5.75"	13.03"	12.73	16:5/8" x 6"

**TO ORDER:** Specify catalog number by the desired O.D. and flange size. Add S.S. for optional 304 stainless steel bolts and nuts. Other sizes and outlets are available upon request.



# FTS419 FABRICATED STEEL TAPPING SLEEVE

NOMINAL PIPE SIZE	SLEEVE O.D. RANGE (inches)	CATALOG NUMBER			LIST PRICE EACH		APPROX. WEIGHT (lbs.)
		SLEEVE #	BY	BRANCH SIZE	W/ ALLOY BOLTS	W/ 304 SS BOLTS & NUTS	
4"	4.00 4.13	FTS419-4.00 FTS419-4.13	X	3" *	\$719.69	\$791.84	28#
	4.50 - 4.80	FTS419-4.80	X	3" * 4" *	719.69 719.69	793.12 793.12	34# 34#
5"	5.13 5.56	FTS419-5.13 FTS419-5.56	X	3" * 4" *	719.69 719.69	793.12 793.12	34# 35#
	6.00 6.13	FTS419-6.00 FTS419-6.13	X	3" 4"	741.90 741.90	815.33 815.33	34# 36#
6"	6.63 - 6.90	FTS419-6.90	X	3" 4" 6" *	741.90 741.90 827.29	815.33 815.33 918.25	34# 36# 53#
	8.00 8.13	FTS419-8.00 FTS419-8.13	X	3" 4" 6"	797.72 797.72 858.61	871.16 871.16 949.59	34# 38# 55#
	8.63 - 9.05	FTS419-9.05	X	3" 4" 6" 8" *	797.72 797.72 858.61 1,049.37	871.16 871.16 949.59 1,157.79	38# 40# 56# 77#
10"	10.00	FTS419-10.00	X	3" 4" 6" 8"	799.64 799.64 887.22 1,094.41	873.09 873.09 978.19 1,202.84	38# 41# 58# 79#
	10.75 - 11.10	FTS419-11.10	X	3" 4" 6" 8" 10" *	799.64 799.64 887.22 1,094.41 1,456.03	873.09 873.09 978.19 1,202.84 1,581.95	41# 43# 60# 81# 108#
	12.75 - 13.20	FTS419-13.20	X	3" 4" 6" 8" 10" 12" *	848.05 848.05 966.05 1,167.25 1,538.13 1,827.51	921.51 921.51 1,057.00 1,275.68 1,664.02 1,988.38	44# 46# 64# 85# 111# 129#
	14.00 15.30	FTS419-14.00 FTS419-15.30	X	3" 4" 6" 8" 10" 12"	934.29 938.13 1,035.97 1,252.47 1,778.46 2,000.96	1,117.60 1,117.60 1,092.22 1,538.87 2,088.01 2,321.29	47# 49# 67# 88# 114# 136#
	16.00 17.40	FTS419-16.00 FTS419-17.40	X	3" 4" 6" 8" 10" 12"	975.69 975.69 1,093.59 1,201.59 1,841.43 2,112.17	1,157.00 1,206.77 1,279.82 1,592.29 2,154.85 2,437.90	50# 52# 71# 92# 117# 144#
18"	18.00 19.50	FTS419-18.00 FTS419-19.50	X	3" 4" 6" 8" 10" 12"	1,002.46 1,002.46 1,127.13 1,369.67 1,917.86 2,144.35	1,185.07 1,185.07 1,315.79 1,661.85 2,234.17 2,471.66	56# 57# 76# 96# 120# 160#
	20.00 21.60	FTS419-20.00 FTS419-21.60	X	3" 4" 6" 8" 10" 12"	1,029.25 1,029.25 1,160.63 1,480.95 1,994.24 2,173.74	1,213.18 1,213.18 1,350.93 1,731.42 2,314.26 2,505.37	56# 58# 78# 100# 123# 160#
	24.00 25.80	FTS419-24.00 FTS419-25.80	X	3" 4" 6" 8" 10" 12"	1,182.04 1,182.04 1,332.20 1,726.21 2,315.90 2,471.34	1,373.39 1,373.39 1,530.81 1,988.62 2,651.57 2,814.53	63# 64# 86# 107# 130# 176#

\* Size-on-size taps require shell cutters that are 1/2" smaller than the nominal size.