



BRONZE SINGLE/DOUBLE STRAP SERVICE SADDLES



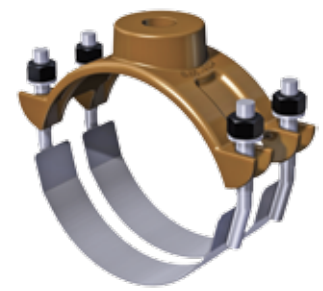
STYLE 101B
BRONZE SADDLE
WITH BRONZE STRAP



STYLE 101BS
BRONZE SADDLE
WITH STAINLESS STRAP



STYLE 202B
BRONZE SADDLE
WITH BRONZE STRAPS



STYLE 202BS
BRONZE SADDLE
WITH STAINLESS STRAPS

NOM. PIPE SIZE	BRONZE SINGLE STRAP SERVICE SADDLES				BRONZE DOUBLE STRAP SERVICE SADDLES				
	O.D. SIZE RANGE	1/2" I.P., 3/4" & 1" I.P. or C.C.		APPROX. WEIGHT EA. (lbs.)	1/2" I.P., 3/4" & 1" I.P. or C.C.		1 1/4", 1 1/2", 2" I.P. or C.C.		APPROX. WEIGHT EA. (lbs.)
		101B	101BS		202B	202BS	202B	202BS	
4"	4.50 - 4.80	N/A			\$198.05	\$174.51	\$245.23	\$203.57	8.0 #
	4.50 - 5.40	\$118.30	\$96.25	4.0 #	N/A				
	4.80 - 5.40	N/A			198.05	174.51	245.23	203.57	8.0 #
6"	6.00 - 6.63	140.97	117.06	4.75 #	N/A				
	6.63 - 7.50 ¹	140.97	117.06	4.75 #	246.11	205.60	250.29	235.03	9.0 #
8"	8.00 - 8.63	147.98	149.22	5.0 #	N/A				
	8.63 - 9.62 ¹	147.98	149.22	5.0 #	281.72	254.44	285.90	267.88	11.5 #
10"	10.00 - 10.75	193.57	195.20	7.5 #	329.84	315.25	334.05	346.29	11.0 #
	11.10 - 12.12	193.57	195.20	7.5 #	329.84	315.25	334.05	346.29	11.0 #
12"	12.00 - 12.75	206.15	207.86	9.0 #	347.41	350.50	369.81	395.39	12.0 #
	13.20 - 14.38	206.15	207.86	9.0 #	347.41	350.50	369.81	395.39	12.0 #
14"	14.40 - 16.00	N/A			382.15	389.33	408.08	441.67	13.0 #
16"	16.00 - 17.40	N/A			438.66	464.57	477.23	521.15	15.0 #
	17.32 - 17.45	N/A			438.66	464.57	477.23	521.15	15.0 #

¹ For PVC pipe, choose the saddle that has the OD closest to the top of the saddle's OD range.

Saddles for ductile iron size PVC (C-900), and iron pipe size PVC should be preformed at factory.

When ordering for PVC pipe, specify O.D. (D.I. or IPS).

TO ORDER: Add tap size to the upper range of the saddle.

EXAMPLE:

	STYLE	UPPER RANGE	TAP SIZE	TYPE THREAD
Bronze Saddle w/ Bronze strap ("B"):	202B	7.50	x 3/4"	IP
Bronze Saddle w/ Stainless Steel strap ("BS"):	202BS	7.50	x 3/4"	IP