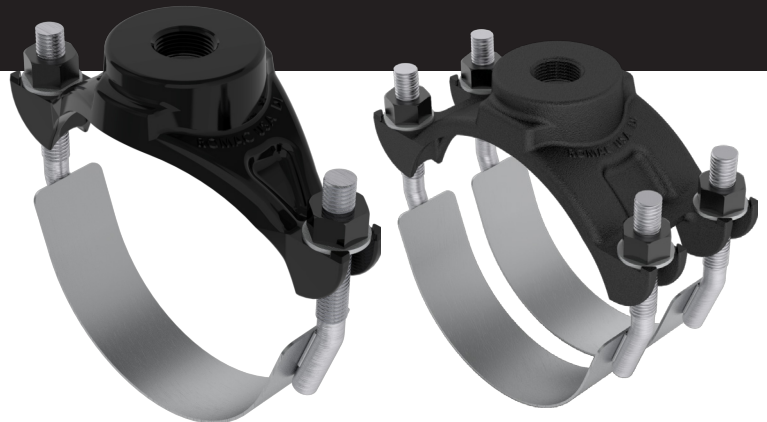


# 101S & 202S SERVICE SADDLES

## SUBMITTAL INFORMATION



101S

202S

## MATERIALS

### CASTING

The saddle body is cast from ductile (nodular) iron, meeting or exceeding ASTM A 536, Grade 65-45-12.

### GASKET

Gasket is made from Nitrile Butadiene Rubber (NBR) compounded for water and sewer service and a tolerance of petroleum products in accordance with ASTM D 2000 MBC 610 and NSF 61 Certified. Other compounds available for special applications.

### STRAPS

Type 304 (18-8) heavy gauge Stainless Steel per ASTM A 240. Straps are two inches wide to spread out clamping forces on the pipe. GMAW and GTAW welds. Passivated for corrosion resistance.

### BOLTS, NUTS

For sizes 1-1/2" through 3", 1/2" UNC roll thread Type 304 (18-8) Stainless Steel bolts with heavy hex nuts. 4" and above use 5/8" UNC roll thread Type 304 (18-8) Stainless Steel bolts with heavy hex nuts. Rod for bolts are per ASTM A 240 and nuts are per ASTM A 194. All welds fully passivated for enhanced corrosion resistance. Nuts coated to prevent galling.

### WASHERS

Flat, type 304 (18-8) heavy gauge Stainless Steel.

### COATINGS

Shop coat applied to cast parts for corrosion protection in transit.

## PRESSURE

Ductile iron, cast iron and steel pipe: rating of pipe up to 350 psi maximum, on pipe sizes up through 24 inch, larger than 24 inch up to 30 inch pressure rating is 150 psi. PVC, asbestos cement and other pipe: up to the maximum rating of the pipe. For other applications please consult your representative.

## STANDARD

Romac 101 & 202 service saddles are in compliance with ANSI/AWWA C800-21.

## SIZES & RANGES

See catalog, sizes up through 32.10.

06/28/2024

Document # 25-8-0002

*This information is based on the best data available at the date printed above. Please check with Romac for any updates or changes.*