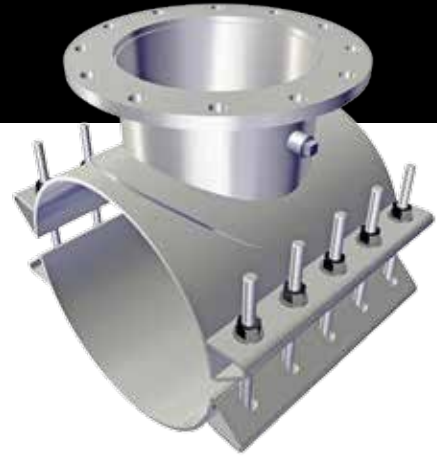


STS420 TAPPING SLEEVE

MANUFACTURED FROM ALL STAINLESS STEEL



SUBMITTAL INFORMATION

MATERIALS

BODY

ASTM A240 304/304L (18-8) Stainless Steel Plate.

FLANGE

304 Stainless Steel Ring Flange per AWWA C228 Class D. Compatible with ANSI Class 125 and 150 bolt circles.

SIDEBARS

ASTM A240 304/304L Stainless Steel. Heavy gauge.

BOLTS AND NUTS

304 Stainless Steel 5/8" National Course rolled thread track-head bolts and heavy hex nuts. Threads are coated to prevent galling.

TEST PLUG

304 Stainless Steel 3/4" NPT Hex Head Plug. Threads are coated to prevent galling.

FLANGE GASKETS

Styrene Butadiene Rubber (SBR) compounded for water and sewer service in accordance with ASTM D 2000. Flange Gaskets only provided with 3" – 12" Flanged Outlets. Other compounds available on request.

OUTLET GASKETS

Styrene Butadiene Rubber (SBR) with reinforcing wire up to 12" Nominal by 12" Outlet. Nitrile Butadiene Rubber (NBR) with larger than 12" Nominal. Rubber is compounded for water and sewer service in accordance with ASTM D 2000. Other compounds available on request.

STANDARD

The Romac Series STS420 style tapping sleeves meet all specifications set forth in the AWWA Standard C223.

PRESSURE & SIZES

Working Pressure (see table below). Test Pressure is 1.25 X Working Pressure. For higher pressure ratings, consult your Romac representative.

NOM PIPE SIZE	WORKING PRESSURE RATING PER OUTLET SIZE (PSI)										
	<=3	4	6	8	10	12	14	16	18	20	24
6	250	250	250								
8	250	250	250	250							
10	250	250	250	250	175*						
12	250	250	250	250	175*	175*					
14	250	250	250	250	175*	175*	150				
16	250	250	250	250	175*	175*	150	150			
18	250	250	250	250	175*	175*	150	150	150		
20	250	250	250	250	175*	175*	150	150	150	150	
24	250	250	250	250	175*	175*	150	150	150	150	150
28	200	200	200	200	175*	175*	150	150	150	150	150
30	150	150	150	150	150	150	150	150	150	150	150
36	150	150	150	150	150	150	150	150	150	150	150
42	150	150	150	150	150	150	150	150	150	150	150
>42	100	100	100	100	100	100	100	100	100	100	100

NOTE: * Class E flanges are required on 10" and 12" outlets for Working Pressure greater than 175 psi and up to 250 psi.

* The 28" Nominal Pipe Size with 10" and 12" outlets are rated at 200 psi with Class E flanges.

RANGES

See Catalog. Other sizes are available on request.

This information is based on the best data available at the date printed above. Please check with Romac for any updates or changes.

