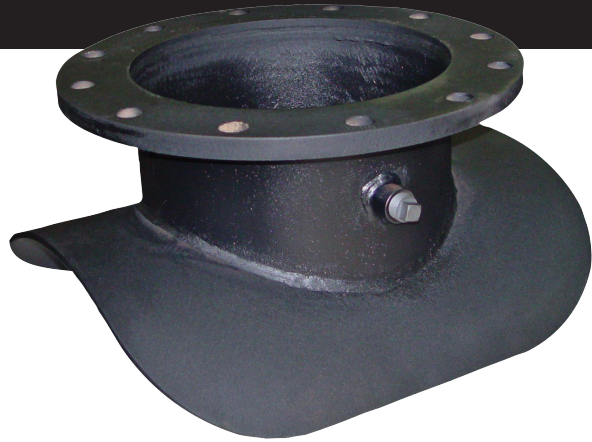


FTS445 WELD-ON TAPPING SLEEVE

SUBMITTAL INFORMATION



MATERIALS

BODY

ASTM A 36 Steel Plate rolled to match the contour of the pipe. Material per AWWA C200.

FLANGE

AWWA Class D Steel Ring Flange, compatible with ANSI Class 125 and 150 bolt circles, are standard. All flanges are

counterbored to accept the raised face of tapping valves per MSS SP-60. Other flange styles are available.

COATING

Shop coat applied to parts for corrosion protection in transit.

PRESSURE

When properly installed, the Romac Style FTS445 can work at pressures up to the maximum rating of the flange. AWWA Class D flanges, sizes 4 - 12 inch, maximum working pressure is 175 psi and a maximum test pressure of 262 psi. For flange sizes 14" and larger the maximum working pressure is 150 psi and the maximum test pressure is 225. Higher pressure ratings can be accommodated. Consult your representative.

SIZES & RANGES

See Catalog. Other sizes available on request.

STANDARD

Manual M11.

08/04/2021

Document # 30-8-0009

This information is based on the best data available at the date printed above. Please check with Romac for any updates or changes.