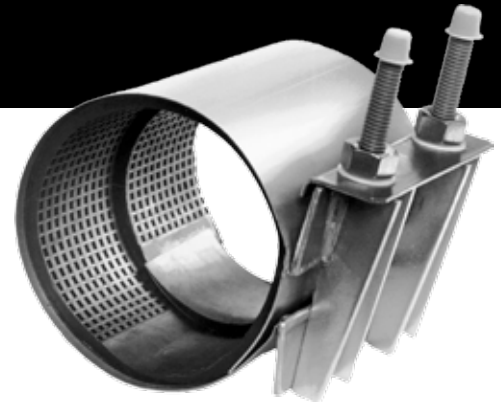


CLC COLLAR LEAK CLAMP

SUBMITTAL INFORMATION



USE

To repair leaking solvent welds on PVC pipe joints. The CLC can also be adapted for copper pipe, coupling OD and length must be provided.

AWWA

C230 Romac CLC repair clamp meet the specifications set forth in the AWWA Standard C230 repair clamp spec.

MATERIALS

SHELL

304 Stainless Steel.

SIDEBARS

Heavy gauge 304 Stainless Steel, GTAW welded to form permanent fusion with shell.

LUGS

304 Stainless Steel, fused to sidebars by GMAW welding.

BOLTS

304 Stainless Steel, 1/2" UNC rolled. Bolts are GMAW welded to sidebar.

NUTS

Heavy hex, 304 Stainless Steel 1/2" UNC threads. Nuts are coated to prevent galling

ARMORS

Heavy gauge 304 Stainless Steel, bonded to gasket to bridge gap at lug area.

LIFTER BARS

304 Stainless Steel, lip curved to hold position while tightening. Heavy gauge serves as bearing surface for nuts.

GASKETS

Virgin SBR rubber compounded for water and sewer service in accordance with ASTM D 2000 MAA 610. Other compounds available for petroleum or high temperature service, or other special applications.

WELDS

GMAW and GTAW welds. 304 Stainless Steel filler wire used as appropriate. All welds fully passivated for enhanced corrosion resistance.

STANDARD

Complies with ANSI/AWWA Standard C230 Stainless-Steel Full-encirclement Repair and Service Connection Clamps 2" – 12".

SIZES & RANGES

See catalog.

This information is based on the best data available at the date printed above. Please check with Romac for any updates or changes.