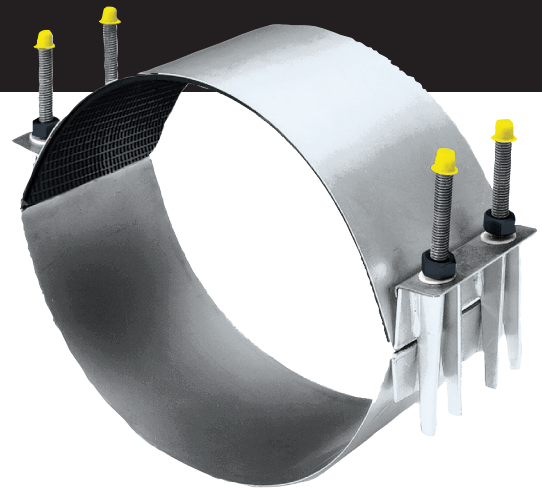


STYLE C & CC REPAIR CLAMPS

SUBMITTAL INFORMATION



NSF61 certified upon request.

Certified to
NSF/ANSI 61 & 372

MATERIALS

SHELL

304 Stainless Steel.

SIDEBARS

Heavy gauge 304 Stainless Steel, GTAW welded to form permanent fusion with shell.

LUGS

304 Stainless Steel, fused to sidebars by GMAW welding.

BOLTS

304 Stainless Steel 1/2" UNC rolled thread Bolts are GMAW welded to sidebar.

NUTS

Heavy hex, 304 Stainless Steel 1/2" UNC threads. Nuts coated to prevent galling.

WASHERS

1/2" Plastic washer prevents galling between nut or stainless steel washer and lifter bar, on all sizes.

LIFTER BARS

304 Stainless Steel, lip curved to hold position while tightening. Heavy gauge serves as bearing surface for nuts.

GASKETS

Gaskets are made from Nitrile Butadiene Rubber (NBR) compounded for water and sewer service and a tolerance of petroleum products in accordance with ASTM D 2000 MBC 610-90. Other compounds available for special applications.

WELDS

GMAW and GTAW welds. 304 Stainless Steel filler wire used as appropriate. All welds fully passivated for enhanced corrosion resistance.

SIZES & RANGES

See catalog.

This information is based on the best data available at the date printed above. Please check with Romac for any updates or changes.