

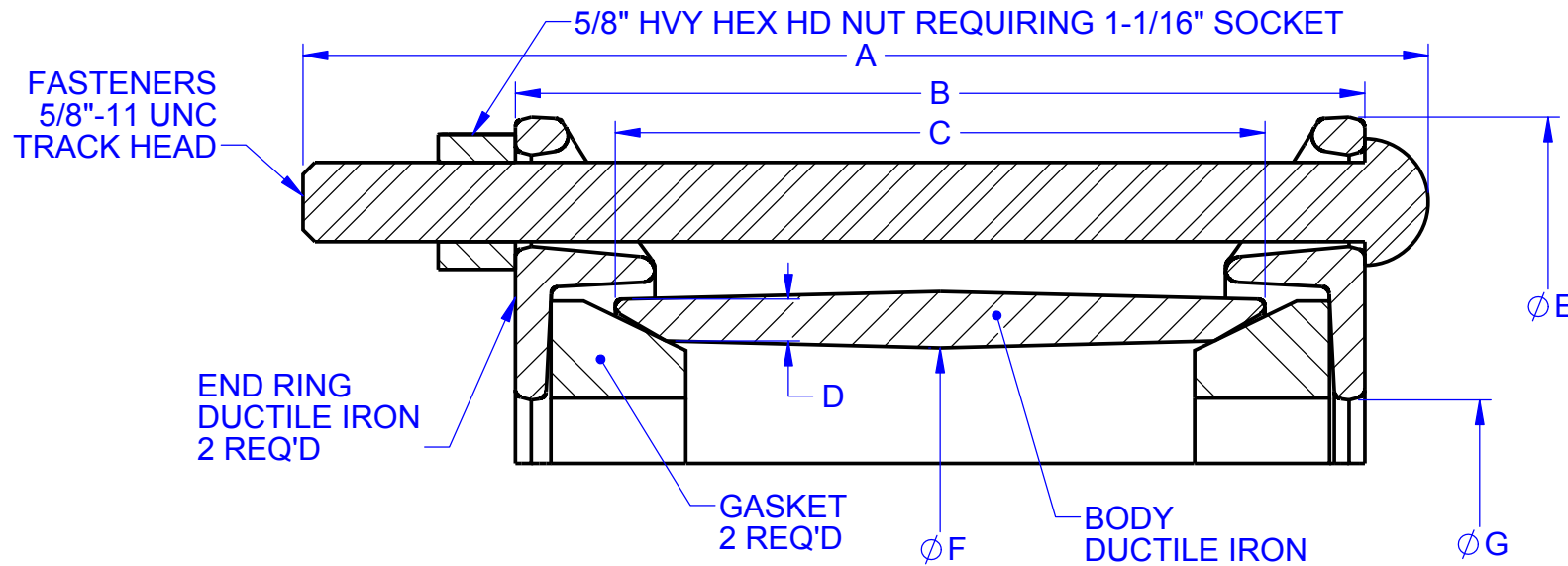
**B1707-A**

BODY SIZE	A	B	C	D	E	F	G			BOLTS		
							RED	BLACK	YELLOW	NO.	DIA.	LENGTH
2	8.50	7.10	5.00	0.34	6.30	3.04	3.05	N/A	N/A	2	5/8	8.00
3	11.00	7.30	5.00	0.38	7.39	4.04	4.05	N/A	N/A	4	5/8	10.50
4	8.50	7.00	5.00	0.34	8.63	5.46	4.90	5.35	5.50	4	5/8	8.00
6	8.50	7.00	5.00	0.45	11.19	7.63	7.00	7.37	7.63	5	5/8	8.00
8	8.50	7.00	5.00	0.45	13.44	9.85	9.16	9.53	9.80	6	5/8	8.00
10A	11.00	8.00	6.00	0.52	16.44	11.05	11.12	N/A	N/A	7	5/8	10.50
10B	11.00	8.00	6.00	0.52	16.44	12.20	N/A	11.44	12.21	7	5/8	10.50
12A	11.00	8.00	6.00	0.52	18.56	13.13	13.04	N/A	N/A	8	5/8	10.50
12B	11.00	8.00	6.00	0.52	18.56	14.58	N/A	13.69	14.50	8	5/8	10.50
14	12.00	9.00	7.00	0.55	21.25	16.96	16.53	15.87	17.06	9	5/8	11.50
16	12.00	9.00	7.00	0.55	23.25	19.06	18.61	17.97	19.05	10	5/8	11.50
18	12.00	9.00	7.00	0.75	25.00	20.35	19.18	19.72	20.40	12	5/8	11.50
20	12.00	9.00	7.00	0.75	26.75	22.43	21.37	22.00	22.31	12	5/8	11.50
22	12.00	9.00	7.00	0.75	28.88	24.42	23.50	24.19	24.50	13	5/8	11.50
24	15.50	12.00	10.00	0.8	31.50	26.49	25.45	26.13	26.56	14	5/8	15.00

REVISIONS			
REV.	DESCRIPTION	DATE	APPROVED
0	INITIAL RELEASE	8/23/92	HED
1	REVISED DIMS FOR 2& 3 SIZE	10/9/99	NST III
2	REVISED DIMS FOR 2 & 3 SIZE	3/17/00	NST III
3	ADDED 20", 22" & 24" SIZES	5/4/03	BP
4	REVISED BOLT LENGTHS, 10" - 24"	7/19/10	NST III
5	ADDED DIMS F& G 24" DIM "G" BLACK WAS 26.31	2/25/11	PNN
6	ADDED NOTES 1 - 3	4/22/11	PNN
7	12A & 12B BOLT LG WAS 11.50	3/27/12	PNN

**NOTE:**

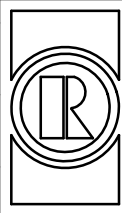
- FASTENERS: HSLA PER AWWA C111. STAINLESS STEEL TYPE 304 OR 316 AVAILABLE UPON REQUEST.
- PRESSURE RATED UP TO 260 PSIG WORKING, 325 PSIG TEST. FOR HIGHER PRESSURES CONTACT ROMAC ENGINEERING DEPARTMENT.
- SHOP COAT APPLIED TO CAST PRODUCTS FOR CROSION PROTECTION IN TRANSIT. FUSION BONDED EPOXY AVAILABLE ON REQUEST.



**PROPRIETARY NOTICE**  
 THIS DRAWING CONTAINS CONFIDENTIAL PROPRIETARY INFORMATION AND IS THE PROPERTY OF ROMAC IND., INC. IT IS TO BE USED ONLY FOR THE PURPOSE FOR WHICH IT WAS SUBMITTED AND SHALL NOT HAVE ITS INFORMATION DISCLOSED OR REPRODUCED IN WHOLE OR IN PART FOR ANY PURPOSE WITHOUT PRIOR WRITTEN PERMISSION OF ROMAC IND., INC.

**UNLESS OTHERWISE SPECIFIED**  
 DIMENSIONS ARE IN INCHES  
 TOLERANCES ARE ON:  
 1 PL DECIMALS ± .060  
 2 PL DECIMALS ± .030  
 3 PL DECIMALS ± .010  
 ANGLES ± 1°  
 FRACTIONS ± 1/64

**SIGNATURES**  
 DRAWN \_\_\_\_\_  
 CHECKED \_\_\_\_\_  
 APPROVAL ORGANIZATIONS  
 ENGINEERING



**ROMAC INDUSTRIES INC.,**  
 BOTHELL, WA

TITLE  
**501 COUPLINGS, 2" - 24"**

DWG. NO.	SIZE	REV. NO.	SCALE	SHEET
B1707-A	A	7	NTS	1 OF 1