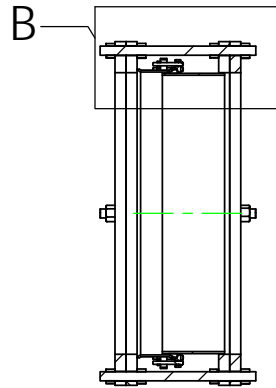
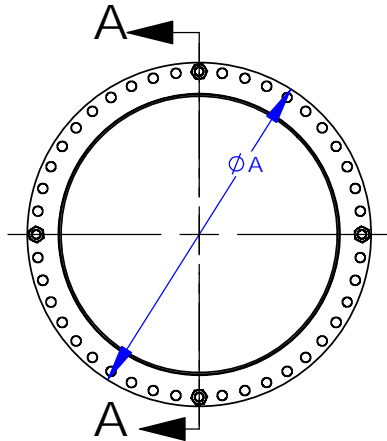


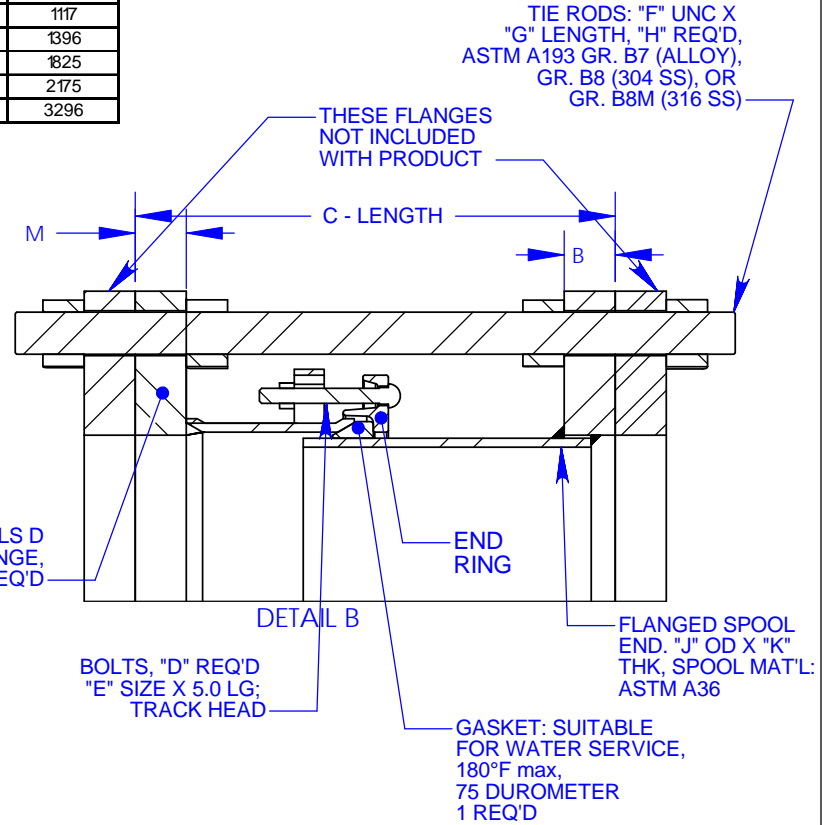
B1973-A

NOM SIZE	DIMENSIONS					BOLTS		TIE RODS				SPOOL			APPROX WEIGHT LBS
	FLANGE OD A	FLANGE THK B	LENGTH C			QTY D	SIZE (UNC) E	SIZE (UNC) F	LENGTH G	H		OD J	PIPE THK K	FLANGE THK M	
			NOM.	MIN.	MAX.					ALLOY	SS				
	REV. # DESCRIPTION DATE APPROVED														
14	21.00	0.94	13.50	12.00	15.00	8	5/8 - 11	1 - 8	22.00	2	2	14.00	0.25	0.94	171
16	23.50	1.00	13.50	12.00	15.00	10	5/8 - 11	1 - 8	22.00	2	2	16.00	0.25	1.00	208
18	25.00	1.06	13.75	12.25	15.25	10	5/8 - 11	1 1/8 - 7	23.25	2	4	18.00	0.25	1.06	229
20	27.50	1.13	13.75	12.25	15.25	12	5/8 - 11	1 1/8 - 7	23.25	2	4	20.00	0.25	1.13	270
24	32.00	1.25	14.25	12.75	15.75	14	5/8 - 11	1 1/4 - 7	25.50	2	4	24.00	0.25	1.25	361
30	38.75	1.38	14.75	13.25	16.25	16	5/8 - 11	1 1/4 - 7	25.50	4	6	30.00	0.38	1.38	582
36	46.00	1.63	15.75	14.25	17.25	18	5/8 - 11	1 1/2 - 6	27.50	4	6	36.00	0.38	1.63	855
42	53.00	1.75	16.50	15.00	18.00	20	5/8 - 11	1 1/2 - 6	29.25	4	6	42.00	0.38	1.75	1117
48	59.50	1.88	16.75	15.25	18.25	22	5/8 - 11	1 1/2 - 6	29.25	6	8	48.00	0.38	1.88	1396
54	66.25	2.13	17.75	16.25	19.25	24	5/8 - 11	1 3/4 - 5	31.75	6	8	54.00	0.38	2.13	1825
60	73.00	2.25	18.00	16.50	19.50	28	5/8 - 11	1 3/4 - 5	31.75	6	10	60.00	0.38	2.25	2175
72	86.50	2.63	18.75	17.25	20.25	32	5/8 - 11	1 3/4 - 5	33.50	10	14	72.00	0.38	2.63	3296

REV. #	DESCRIPTION	DATE	APPROVED
0	INITIAL RELEASE	3/13/02	NST III
1	UPDATED TIE ROD LENGTH TO MATCH F2080-D	5/22/02	NST III
2	ADDED FLANGE THK (B) AND TEST PRESSURE	7/23/02	NST III
3	ADDED 72" SIZE	7/24/02	NST III
4	REVISED LG DIM "C" AND TIE ROD LG "G"	9/13/02	NST III
5	CHANGED NOTES TO REFLECT STD EPOXY & STD HSLA FASTENERS	1/31/03	NST III
6	ADDED STAINLESS STEEL TIE RODS TO TABLE	3/4/04	NST III
7	CORRECTED SS TIE ROD QTY'S. 16" WAS 4, 42" WAS 8, 48" WAS 10, 54" WAS 10, 60" WAS 12, 72" WAS 16	1/17/06	NST III
8	UPDATED APPROX WEIGHT 14"-72"	7/6/09	PNN



SECTION A-A
SCALE 1 : 37



- NOTES:
- NSF 61 CERTIFIED COATING: FUSION BONDED EPOXY IS STANDARD. OTHER COATINGS AVAILABLE UPON REQUEST.
 - FASTENERS: HSLA PER ASTM A588 IS STANDARD. STAINLESS STEEL TYPE 304 OR 316 PER ASTM A193 AVAILABLE UPON REQUEST.
 - PRESSURE RATED UP TO FLANGES PROVIDED. 14"-72" AWWA CLS D 150 PSIG WORKING, 225 PSIG TEST. FOR HIGHER PRESSURES, AWWA CLS E OR CLS F FLANGES AVAILABLE.
 - WHEN INSTALLING, POSITION THE FLANGED COUPLING END IN THE REQUIRED LOCATION & THEN FOLLOW BOLTING INSTRUCTIONS.
 - NOT INTENDED TO PROVIDE LATERAL MOVEMENT IN PIPELINE.

<p>PROPRIETARY NOTICE</p> <p>THIS DRAWING CONTAINS CONFIDENTIAL PROPRIETARY INFORMATION AND IS THE PROPERTY OF ROMAC IND., INC. IT IS TO BE USED ONLY FOR THE PURPOSE FOR WHICH IT WAS SUBMITTED AND SHALL NOT HAVE ITS INFORMATION DISCLOSED OR REPRODUCED IN WHOLE OR IN PART FOR ANY PURPOSE WITHOUT PRIOR WRITTEN PERMISSION OF ROMAC IND., INC.</p>	<p>UNLESS OTHERWISE SPECIFIED</p> <p>DIMENSIONS ARE IN INCHES</p> <p>TOLERANCES ARE ON: 1 PL DECIMALS ± .020 2 PL DECIMALS ± .010 3 PL DECIMALS ± .005 ANGLES ± 1° FRACTIONS ± 1/64</p>	<p>SIGNATURES</p> <p>DRAWN</p> <p>CHECKED</p> <p>APPROVAL ORGANIZATIONS ENGINEERING</p>	<p>ROMAC INDUSTRIES INC., BOTHELL, WA</p> <p>TITLE DISMANTLING JOINT DJ400 - W/ TIE RODS 14"-72", CLS D FLANGE</p>	<p>DWG. NO. B1973-A</p> <p>SIZE A</p> <p>REV. NO. 8</p> <p>SCALE NTS</p> <p>SHEET 1 OF 1</p>
--	--	---	--	--