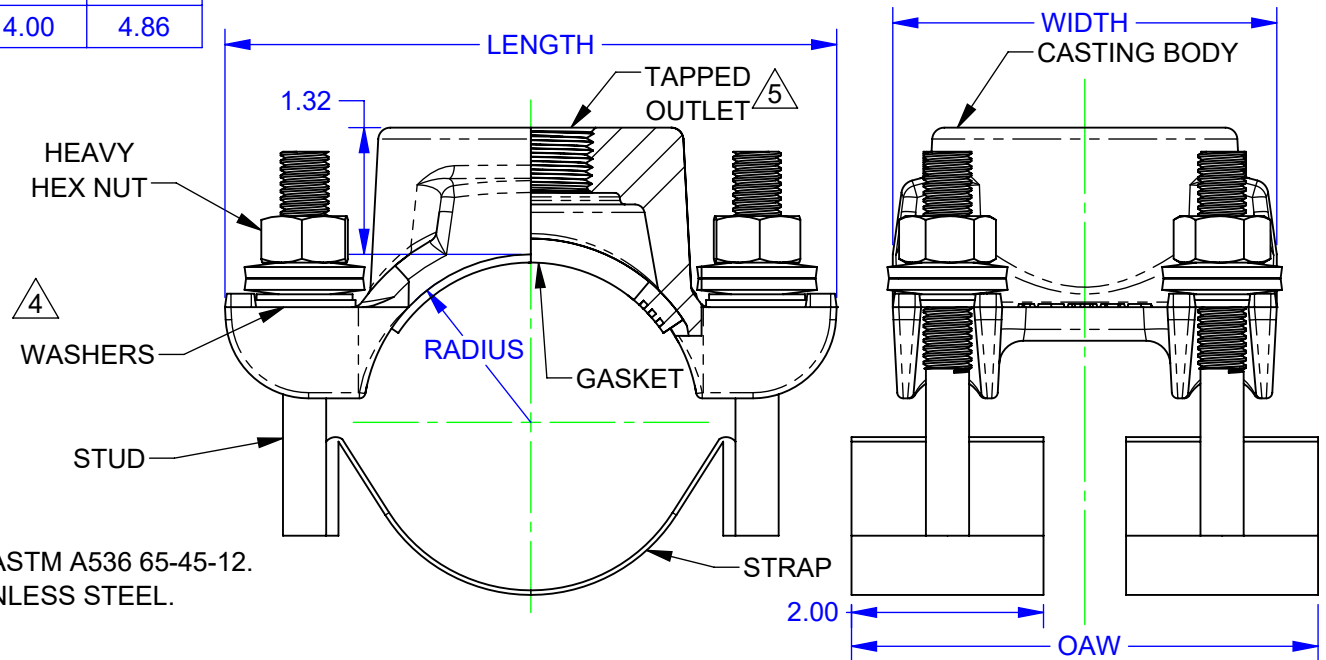


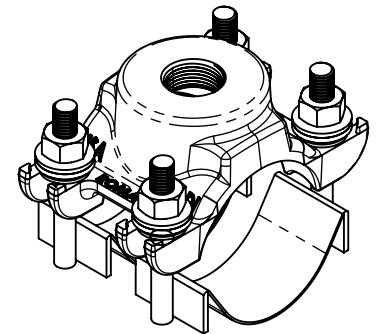
NOMINAL SIZE (IN)	PIPE OD (IN)	RADIUS (IN)	LENGTH (IN)	WIDTH (IN)	OAW (IN)
2	2.38	1.19	4.86	3.60	4.46
	2.50	1.25	4.86	3.60	4.46
3	3.50	1.75	6.50	4.00	4.86

REVISIONS			
REV.	DESCRIPTION	DATE	EDITOR
R2	A	UPDATED TABLE DIMENSIONS.	6/20/22
	B	REMOVED NYLON THICKNESS.	



NOTES:

- CASTING BODY: DUCTILE IRON PER ASTM A536 65-45-12.
- STRAP, STUD, & NUT: TYPE 304 STAINLESS STEEL.
- STUD & NUT: 1/2-13 UNC.
- WASHERS:
 - 1 EACH OF: 304SS & ACETAL PLASTIC.
 - 2 SPRING WASHERS.
- OUTLET: REFER TO CATALOG FOR AVAILABLE "IP" (NPT) OR "CC" (PER AWWA C800) TAP SIZES.
- GASKET: NBR PER ASTM D2000 MBC 610. EPDM AVAILABLE UPON REQUEST.
- WELDING: GMAW AND GTAW. CHEMICALLY CLEANED AND PASSIVATED.
- COATING:
 - CASTING: NYLON COATING **B**
 - NUTS: BLACK EPOXY E-COAT
- FOR USE ON HDPE PIPE WITH MINIMUM WALL THICKNESS OF SDR 26.



FOR CUSTOMER USE

RELEASED

<p>PROPRIETARY NOTICE</p> <p>THIS DRAWING CONTAINS CONFIDENTIAL PROPRIETARY INFORMATION AND IS THE PROPERTY OF ROMAC IND., INC. IT IS TO BE USED ONLY FOR THE PURPOSE FOR WHICH IT WAS SUBMITTED AND SHALL NOT HAVE ITS INFORMATION DISCLOSED OR REPRODUCED IN WHOLE OR IN PART FOR ANY PURPOSE WITHOUT PRIOR WRITTEN PERMISSION OF ROMAC IND., INC.</p>		<p>UNLESS OTHERWISE SPECIFIED</p> <ul style="list-style-type: none"> DIMENSIONS ARE IN INCHES DRAWING NOT TO SCALE. 		<p>SIGNATURES</p> <p>DRAWN Kevin Tam</p> <p>APPROVED Tanja Parviainen</p>		<p>DATE</p> <p>6/20/2022</p> <p>6/21/2022</p>		<p>ROMAC INDUSTRIES INC.</p> <p>TITLE DI SADDLES 202NH, 2" - 3"</p>											
<p>MODEL NAME: SERVICE SADDLE, ASSEM, DI, 202, 03.50 IN MODEL CAD #: CAD-052771</p>		<p>CONFIGURATION NAME: HDPE</p>		<p>THIRD ANGLE PROJECTION</p>		<p>LEGACY DRAWING #: CAD-023190 DRAWING FILE NAME: SERVICE SADDLE, ASSEM, DI, 202, HDPE, 2 - 3 IN</p>		<p>DWG. NO. CAD-053897</p>		<p>SIZE A</p>		<p>REV. NO. R2</p>		<p>SCALE NTS</p>		<p>SHEET 1 OF 1</p>		<p>AUTHOR: Kevin Tam</p>	