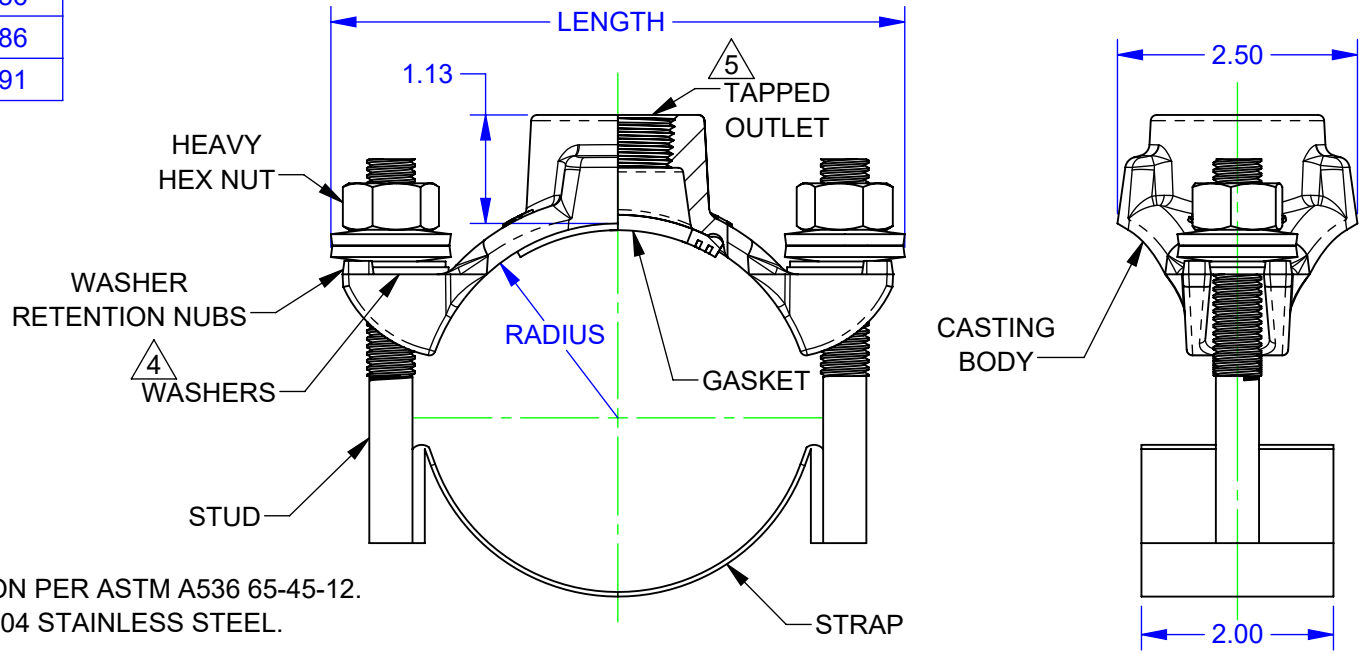


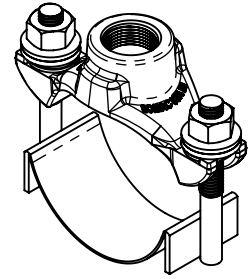
| NOMINAL SIZE (IN) | PIPE OD (IN) | RADIUS (IN) | LENGTH (IN) A |
|-------------------|--------------|-------------|---|
| 2 | 2.13 | 1.07 | 4.73 |
| | 2.38 | 1.19 | 4.86 |
| | 2.50 | 1.25 | 4.86 |
| 3 | 3.50 | 1.75 | 5.91 |

| REVISIONS | | | |
|-----------|-------------|--------------------------|---------|
| REV. | DESCRIPTION | DATE | EDITOR |
| R2 | A | UPDATED ALL LENGTHS. | 6/20/22 |
| | B | REMOVED NYLON THICKNESS. | |



NOTES:

1. CASTING BODY: DUCTILE IRON PER ASTM A536 65-45-12.
2. STRAP, STUD, & NUT: TYPE 304 STAINLESS STEEL.
3. STUD & NUT: 1/2-13 UNC.
4. WASHERS:
 - 1 EACH OF: 304SS & ACETAL PLASTIC.
 - 2 SPRING WASHERS.
5. OUTLET: UP TO 1" "IP" (NPT) OR 1" "CC" (PER AWWA C800) TAP SIZES.
6. GASKET: NBR PER ASTM D2000 MBC 610. EPDM AVAILABLE UPON REQUEST.
7. WELDING: GMAW AND GTAW. CHEMICALLY CLEANED AND PASSIVATED.
8. COATING:
 - CASTING: NYLON COATING B
 - NUTS: BLACK EPOXY E-COAT
9. FOR USE ON HDPE PIPE WITH MINIMUM WALL THICKNESS OF SDR 26.



FOR CUSTOMER USE

RELEASED

| | | | | | | | | | |
|---|--|--|--|--|--|---|--|---|--|
| <p>PROPRIETARY NOTICE</p> <p>THIS DRAWING CONTAINS CONFIDENTIAL PROPRIETARY INFORMATION AND IS THE PROPERTY OF ROMAC IND., INC. IT IS TO BE USED ONLY FOR THE PURPOSE FOR WHICH IT WAS SUBMITTED AND SHALL NOT HAVE ITS INFORMATION DISCLOSED OR REPRODUCED IN WHOLE OR IN PART FOR ANY PURPOSE WITHOUT PRIOR WRITTEN PERMISSION OF ROMAC IND., INC.</p> | | <p>UNLESS OTHERWISE SPECIFIED</p> <ul style="list-style-type: none"> • DIMENSIONS ARE IN INCHES • DRAWING NOT TO SCALE. | | <p>SIGNATURES</p> <p>DRAWN Kevin Tam</p> <p>APPROVED Tanja Parviainen</p> | | <p>DATE</p> <p>06/20/2022</p> <p>6/24/2022</p> | | <p>ROMAC INDUSTRIES INC.</p> <p>TITLE DI SADDLES 101NH, SMALL TAP, 2" - 3"</p> | |
| <p>MODEL NAME: SERVICE SADDLE, ASSEM, DI, 101, S-BOSS, 04.05 IN MODEL CAD #: CAD-053815</p> | | <p>CONFIGURATION NAME: HDPE</p> | | <p>THIRD ANGLE PROJECTION</p> | | <p>LEGACY DRAWING #: CAD-023243 DRAWING FILE NAME: SERVICE SADDLE, ASSEM, DI, 101, S-BOSS, HDPE, 2 - 3 IN</p> | | <p>AUTHOR: Kevin Tam</p> | |
| <p>DWG. NO. CAD-053896</p> | | <p>SIZE A</p> | | <p>REV. NO. R2</p> | | <p>SCALE NTS</p> | | <p>SHEET 1 OF 1</p> | |