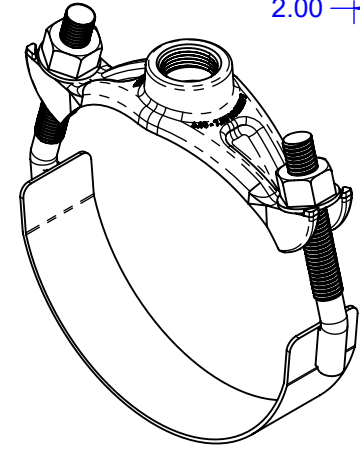
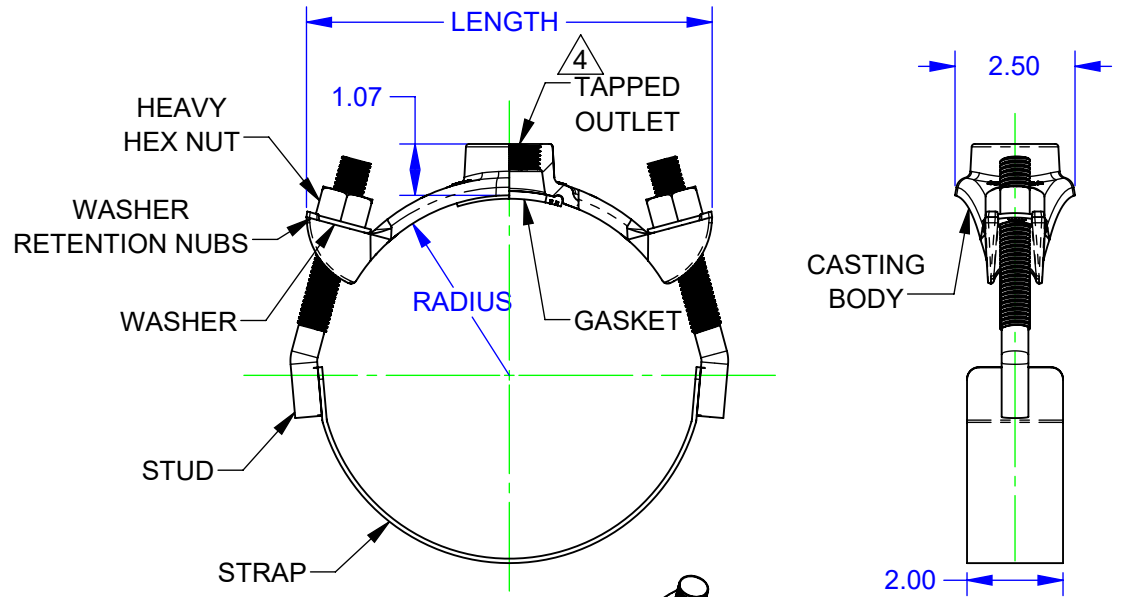


NOMINAL SIZE (IN)	PIPE OD RANGE (IN)	RADIUS (IN)	LENGTH (IN)
4	4.50	2.25	6.82
	4.50 - 4.80	2.40	6.76
	4.80 - 5.40	2.70	7.38
5	5.56	2.78	7.40
6	6.63	3.32	8.10
	6.63 - 6.90	3.45	8.22
	6.90 - 7.50	3.75	8.45
8	8.63	4.32	10.00
	8.63 - 9.05	4.53	9.84
	9.05 - 9.62	4.81	10.34
10	10.75	5.38	10.61
	11.10	5.55	10.48
	11.10 - 12.12	6.06	12.55
12	12.75	6.38	13.66
	12.75 - 13.20	6.60	13.48
	14.00	7.00	14.70
	13.20 - 14.38	7.19	14.51

REVISIONS			
REV.	DESCRIPTION	DATE	EDITOR
R1	A	9/1/22	KKT
UPDATED SIZES IN TABLE.			



- NOTES:
1. CASTING BODY: BRONZE PER ASTM B584 85-5-5-5 (C83600).
 2. STRAP, STUD, & NUT: TYPE 304 STAINLESS STEEL.
 3. STUD & NUT: 5/8-11 UNC.
 4. OUTLET: UP TO 1" "IP" (NPT) OR 1" "CC" (PER AWWA C800) TAP SIZES.
 5. GASKET: NBR PER ASTM D2000 MBC 610. EPDM AVAILABLE UPON REQUEST.
 6. WELDING: GMAW. CHEMICALLY CLEANED AND PASSIVATED
 7. NUTS COATING: BLACK EPOXY E-COAT.

FOR CUSTOMER USE

RELEASED

PROPRIETARY NOTICE THIS DRAWING CONTAINS CONFIDENTIAL PROPRIETARY INFORMATION AND IS THE PROPERTY OF ROMAC IND., INC. IT IS TO BE USED ONLY FOR THE PURPOSE FOR WHICH IT WAS SUBMITTED AND SHALL NOT HAVE ITS INFORMATION DISCLOSED OR REPRODUCED IN WHOLE OR IN PART FOR ANY PURPOSE WITHOUT PRIOR WRITTEN PERMISSION OF ROMAC IND., INC.		UNLESS OTHERWISE SPECIFIED • DIMENSIONS ARE IN INCHES • DRAWING NOT TO SCALE.		SIGNATURES DRAWN Kevin Tam APPROVED Tanja Parviainen		DATE 09/01/2022 9/22/2022		ROMAC INDUSTRIES INC. TITLE BRONZE SADDLES 101BS, 4" - 12"											
MODEL NAME: SERVICE SADDLE, ASSEM, BS, 101, SS STRAPS MODEL CAD #: CAD-050261		CONFIGURATION NAME: Default		THIRD ANGLE PROJECTION		LEGACY DRAWING #: N/A DRAWING FILE NAME: SERVICE SADDLE, ASSEM, BS, 101, SS STRAPS		DWG. NO. CAD-050816		SIZE A		REV. NO. R1		SCALE NTS		SHEET 1 OF 1		AUTHOR: Kevin Tam	