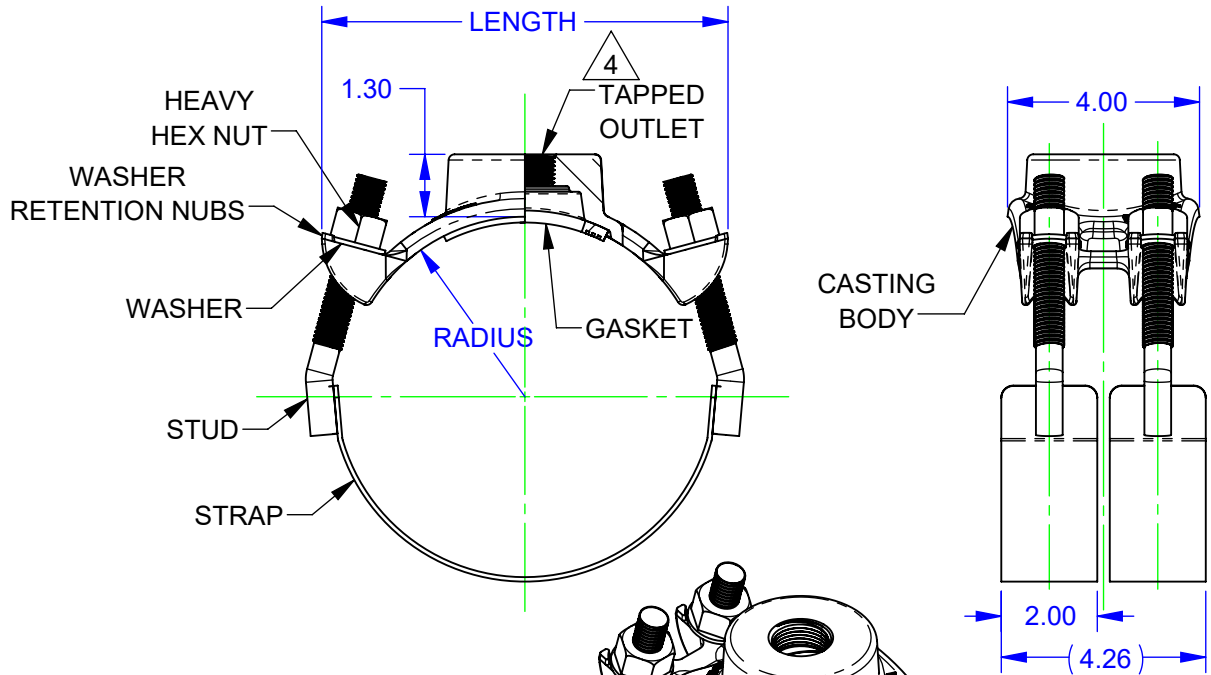


| NOMINAL SIZE (IN) | PIPE OD RANGE (IN) | RADIUS (IN) | LENGTH (IN) |
|-------------------|--------------------|-------------|-------------|
| 4 | 4.50 | 2.25 | 6.92 |
| | 4.50 - 4.80 | 2.40 | 6.92 |
| | 4.80 - 5.40 | 2.70 | 7.55 |
| 6 | 6.63 | 3.32 | 7.85 |
| | 6.63 - 6.90 | 3.45 | 7.92 |
| | 6.90 - 7.50 | 3.75 | 8.46 |
| 8 | 8.63 | 4.32 | 9.76 |
| | 8.63 - 9.05 | 4.53 | 9.85 |
| | 9.05 - 9.62 | 4.81 | 10.35 |
| 10 | 10.75 | 5.38 | 11.82 |
| | 10.75 - 11.10 | 5.55 | 11.66 |
| | 11.10 - 12.12 | 6.06 | 12.56 |
| 12 | 12.75 | 6.38 | 13.67 |
| | 12.75 - 13.20 | 6.60 | 13.49 |
| | 14.00 | 7.00 | 14.72 |
| | 13.20 - 14.38 | 7.19 | 14.52 |
| 14 | 14.40 - 15.30 | 7.65 | 14.85 |
| | 14.40 - 16.00 | 8.00 | 14.57 |
| 16 | 16.00 - 17.40 | 8.70 | 14.66 |
| | 17.32 - 17.45 | 8.73 | 14.66 |

| REVISIONS | | | |
|-------------------------|-------------|--------|--------|
| REV. | DESCRIPTION | DATE | EDITOR |
| R1 | A | 9/1/22 | KKT |
| UPDATED SIZES IN TABLE. | | | |



NOTES:

1. CASTING BODY: BRONZE PER ASTM B584 85-5-5-5 (C83600).
2. STRAP, STUD, & NUT: TYPE 304 STAINLESS STEEL.
3. STUD & NUT: 5/8-11 UNC.
4. OUTLET: UP TO 2.5" "IP" (NPT) OR 2" "CC" (PER AWWA C800) TAP SIZES.
5. GASKET: NBR PER ASTM D2000 MBC 610. EPDM AVAILABLE UPON REQUEST.
6. WELDING: GMAW. CHEMICALLY CLEANED AND PASSIVATED
7. NUTS COATING: BLACK EPOXY E-COAT.

| | | | | | | | | | | | | | | | | | | | |
|--|--|---|--|---|--|---|--|--|--|-------------------|--|------------------------|--|----------------------|--|-------------------------|--|--------------------------|--|
| <p>PROPRIETARY NOTICE</p> <p>THIS DRAWING CONTAINS CONFIDENTIAL PROPRIETARY INFORMATION AND IS THE PROPERTY OF ROMAC IND., INC. IT IS TO BE USED ONLY FOR THE PURPOSE FOR WHICH IT WAS SUBMITTED AND SHALL NOT HAVE ITS INFORMATION DISCLOSED OR REPRODUCED IN WHOLE OR IN PART FOR ANY PURPOSE WITHOUT PRIOR WRITTEN PERMISSION OF ROMAC IND., INC.</p> | | <p>UNLESS OTHERWISE SPECIFIED</p> <ul style="list-style-type: none"> DIMENSIONS ARE IN INCHES DRAWING NOT TO SCALE. | | <p>SIGNATURES</p> <p>DRAWN Kevin Tam</p> <p>APPROVED Tanja Parviainen</p> | | <p>DATE</p> <p>09/01/2022</p> <p>9/22/2022</p> | | <p>ROMAC INDUSTRIES INC.</p> <p>TITLE BRONZE SADDLES 202BS, 4" - 16"</p> | | | | | | | | | | | |
| <p>MODEL NAME: SERVICE SADDLE, ASSEM, BS, 202, SS STRAPS MODEL CAD #: CAD-050257</p> | | <p>CONFIGURATION NAME: Default</p> | | <p>THIRD ANGLE PROJECTION</p> | | <p>LEGACY DRAWING #: B1430-A DRAWING FILE NAME: SERVICE SADDLE, ASSEM, BS, 202, SS STRAPS</p> | | <p>DWG. NO. CAD-050522</p> | | <p>SIZE A</p> | | <p>REV. NO. R1</p> | | <p>SCALE NTS</p> | | <p>SHEET 1 OF 1</p> | | <p>AUTHOR: Kevin Tam</p> | |

FOR CUSTOMER USE

RELEASED