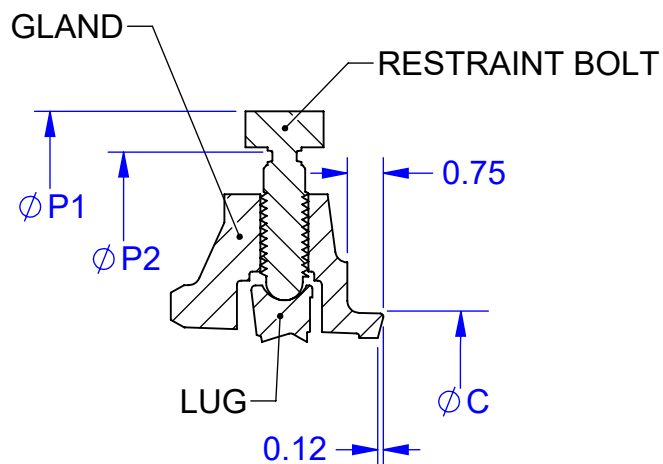
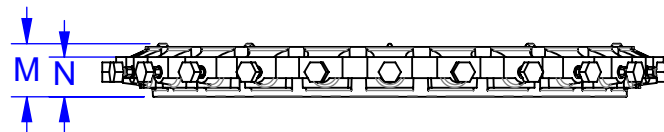
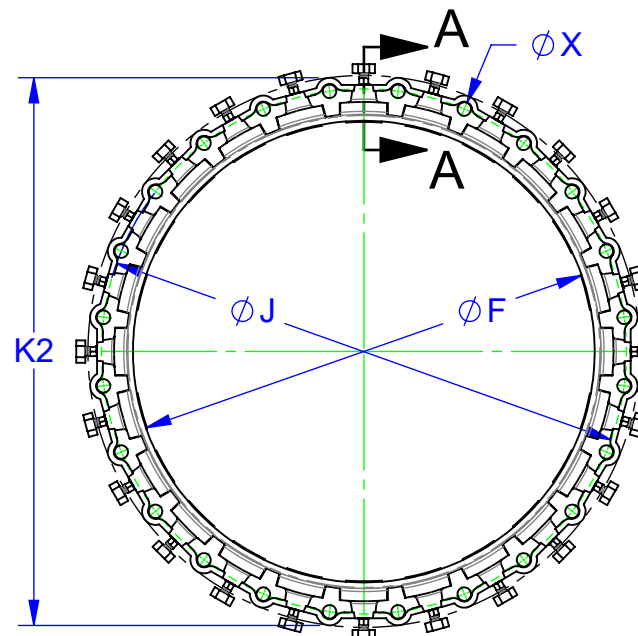


SIZES	PIPE OD	CATALOG NUMBER	ØC	F	J	K2	M	N	P1	P2	ØX	# OF LUGS	WORKING PRESSURE [PSI]	APPX. WEIGHT [LBS]
30"	32.00	30" RG-IMPORT	33.29	32.17	36.88	39.12	4.10	2.89	41.1	39.30	1.125	20	250	159
36"	38.30	36" RG-IMPORT	39.59	38.47	43.75	46.00	4.42	3.31	47.87	46.07	1.125	24	250	235
42"	44.50	42" RG-IMPORT	45.79	44.67	50.62	53.38	4.78	3.56	55.05	53.25	1.375	28	250	344
48"	50.80	48" RG-IMPORT	52.09	50.97	57.50	60.26	5.29	3.56	61.35	59.55	1.375	32	250	456

REVISIONS			
REV.	DESCRIPTION	DATE	EDITOR
0	INITIAL RELEASE	9/4/19	TJM
1	COATING TYPE WAS E-COAT	11/11/19	TJM



SECTION A-A



NOTES:

1. MATERIAL: ASTM A536 65-45-12
2. COATING: SHOP COAT OR EQUIVALENT
3. FOR USE ON DUCTILE IRON PIPE

FOR CUSTOMER USE

RELEASED

<p>PROPRIETARY NOTICE</p> <p>THIS DRAWING CONTAINS CONFIDENTIAL PROPRIETARY INFORMATION AND IS THE PROPERTY OF ROMAC IND., INC. IT IS TO BE USED ONLY FOR THE PURPOSE FOR WHICH IT WAS SUBMITTED AND SHALL NOT HAVE ITS INFORMATION DISCLOSED OR REPRODUCED IN WHOLE OR IN PART FOR ANY PURPOSE WITHOUT PRIOR WRITTEN PERMISSION OF ROMAC IND., INC.</p>		<p>UNLESS OTHERWISE SPECIFIED</p> <ul style="list-style-type: none"> <li>DIMENSIONS ARE IN INCHES</li> </ul>		<p>SIGNATURES</p> <p>DRAWN Tyler Matthews</p> <p>APPROVED Sam Hill</p>		<p>DATE</p> <p>08/27/2019</p> <p>11/12/2019</p>				<p>ROMAC INDUSTRIES INC.</p> <p>TITLE MECHANICAL JOINT CUSTOMER DRAWING 30-48 INCH, DI</p>					
<p>MODEL NAME: MECHANICAL JOINT, RESTRAINT, DI, ASSEMBLY, 36 INCH MODEL CAD #: CAD-047652</p>		<p>CONFIGURATION NAME: Default</p>		<p>THIRD ANGLE PROJECTION</p>		<p>DWG. NO. CAD-047745</p>			<p>SIZE A</p>	<p>REV. NO. R1</p>	<p>SCALE NTS</p>	<p>SHEET 1 OF 1</p>	<p>LEGACY DRAWING #: ERROR! Legacy Drawing Number DRAWING FILE NAME: DI, MJ, CUSTOMER DRAWING, 30-48 INCH</p>		<p>AUTHOR: James Protzeller</p>