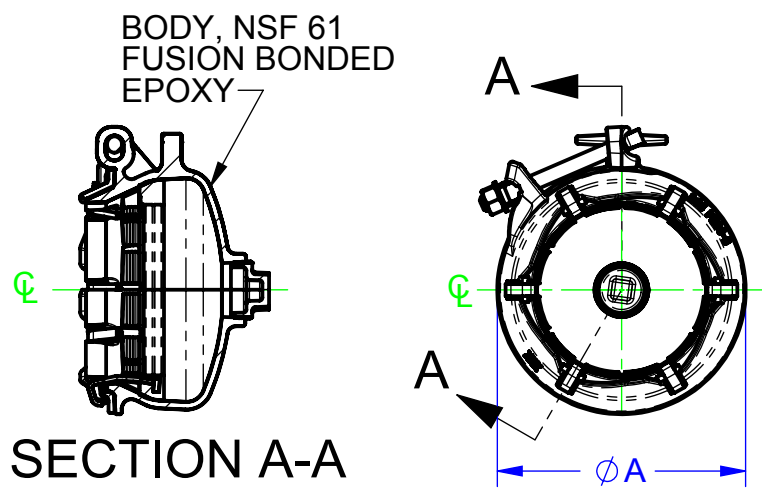
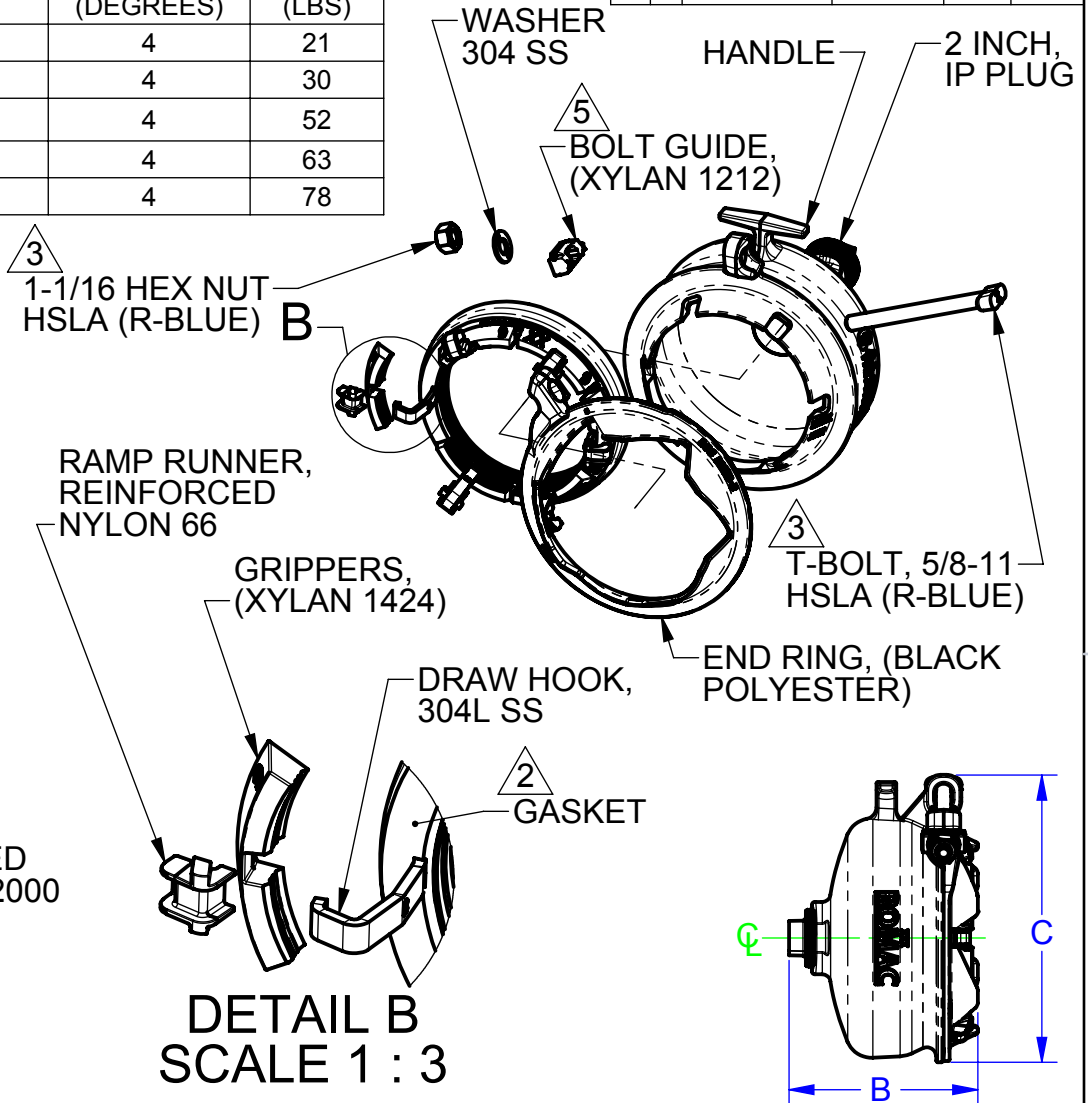


SIZE	PIPE OD RANGE	BODY OD	LENGTH	HEIGHT	MAX PRESSURE (PSI)	MAX DEFLECTION (DEGREES)	APPX. WEIGHT (LBS)
		A	B	C			
4	4.50-4.90	8.13	7.43	9.77	350	4	21
6	6.60-7.00	10.35	7.87	11.98	350	4	30
8	8.60-9.10	13.38	9.65	15.04	350	4	52
10	10.75-11.20	15.47	9.91	17.12	350	4	63
12	12.75-13.30	17.54	10.27	19.19	350	4	78

REVISIONS					
REV.	DESCRIPTION	SHEET #	DATE	EDITOR	
R0	A	INITIAL RELEASE	1	4/25/19	TJM



- NOTES:**
1. ALL MATERIALS ASTM A536 GRADE 65-45-12 DUCTILE IRON UNLESS OTHERWISE SPECIFIED
 2. GASKET MATERIAL: NSF 61 SBR PER ASTM D2000 OR NSF 61 NBR UPON REQUEST
 3. FASTENER MATERIAL: HSLA, R-BLUE COATED NUT AND BOLT. WASHER IS 304 SS
 4. MINIMUM PIPE INSERTION IS 4 INCHES
 5. BOLT GUIDE COMES STANDARD WITH BLACK XYLAN 1212. BLACK E-COAT UPON REQUEST.



FOR CUSTOMER USE

RELEASED

PROPRIETARY NOTICE THIS DRAWING CONTAINS CONFIDENTIAL PROPRIETARY INFORMATION AND IS THE PROPERTY OF ROMAC IND., INC. IT IS TO BE USED ONLY FOR THE PURPOSE FOR WHICH IT WAS SUBMITTED AND SHALL NOT HAVE ITS INFORMATION DISCLOSED OR REPRODUCED IN WHOLE OR IN PART FOR ANY PURPOSE WITHOUT PRIOR WRITTEN PERMISSION OF ROMAC IND., INC.		UNLESS OTHERWISE SPECIFIED • DIMENSIONS ARE IN INCHES • DRAWING NOT PERFECTLY TO SCALE		SIGNATURES DRAWN Tyler Matthews APPROVED Kevin Tam		DATE 4/25/2019 4/25/2019		ROMAC INDUSTRIES INC. TITLE ALPHA END CAP, 4-12 INCH, STANDARD	
MODEL NAME: ALPHA, END CAP, 6 INCH, ASSEMBLY MODEL CAD #: CAD-045543		CONFIGURATION NAME: Default		THIRD ANGLE PROJECTION		DWG. NO. CAD-045804		SIZE A	
						REV. NO. R0		SCALE 1:8	
						LEGACY DRAWING #: DRAWING FILE NAME: ALPHA, END CAP, 4-12 INCH, STANDARD		SHEET 1 OF 1	
								AUTHOR: Tyler Matthews	