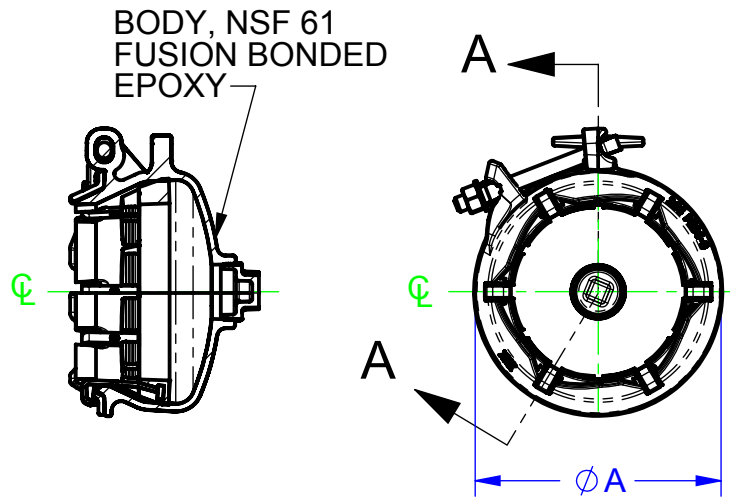


SIZE	PIPE OD RANGE	BODY OD	LENGTH	HEIGHT	MAX PRESSURE (PSI)	MAX DEFLECTION (DEGREES)	APPX. WEIGHT (LBS)
		A	B	C			
4	4.80-5.10	8.13	7.43	9.77	350	2	21
6	6.90-7.10	10.35	7.87	11.98	350	2	30
8	9.05-9.40	13.38	9.65	15.04	350	2	52
10	11.10-11.45	15.47	9.91	17.12	350	2	63
12	13.20-13.60	17.54	10.27	19.19	350	2	78

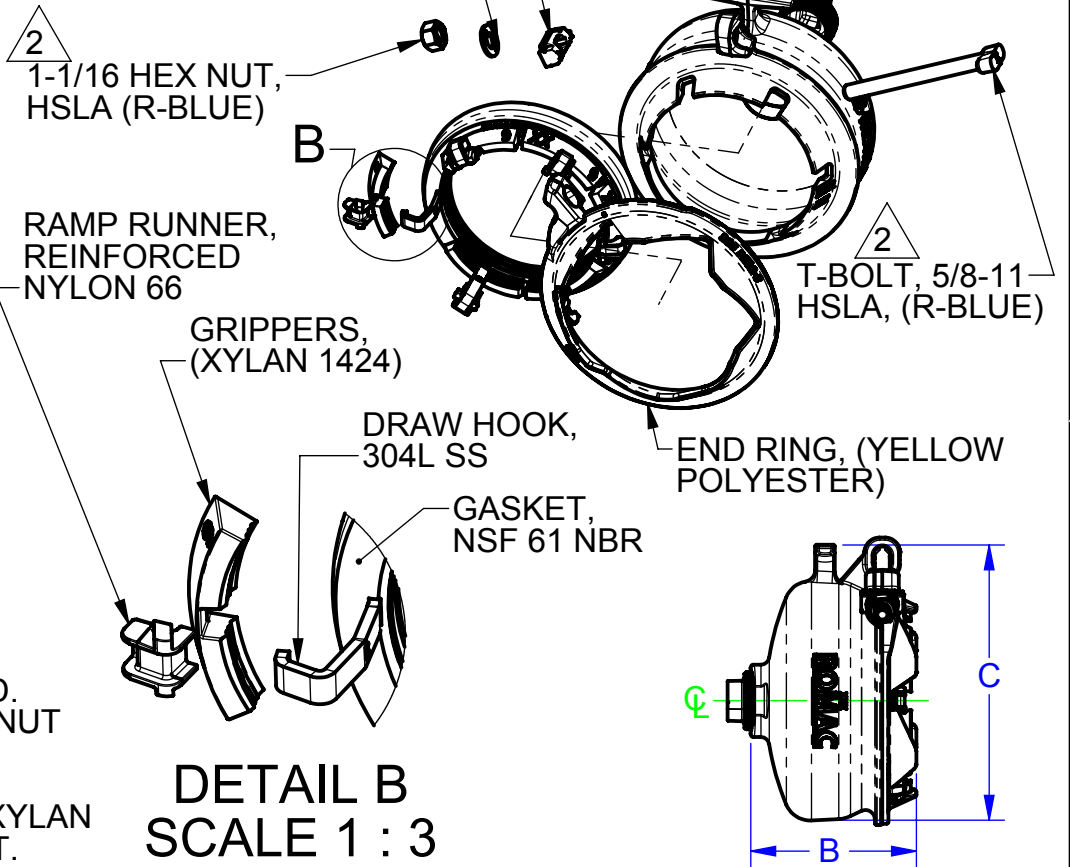
REVISIONS					
REV.	DESCRIPTION	SHEET #	DATE	EDITOR	
R0	A	INITIAL RELEASE	1	4/25/19	TJM



SECTION A-A

NOTES:

1. ALL MATERIALS ASTM A536 GRADE 65-45-12 DUCTILE IRON UNLESS OTHERWISE SPECIFIED.
2. FASTENER MATERIAL: HSLA, R-BLUE COATED NUT AND BOLT. WASHER IS 304 SS.
3. MINIMUM PIPE INSERTION IS 4 INCHES.
4. BOLT GUIDE COMES STANDARD WITH BLACK XYLAN 1212 COATING. BLACK E-COAT UPON REQUEST.



**DETAIL B
SCALE 1 : 3**

FOR CUSTOMER USE

RELEASED

<p>PROPRIETARY NOTICE</p> <p>THIS DRAWING CONTAINS CONFIDENTIAL PROPRIETARY INFORMATION AND IS THE PROPERTY OF ROMAC IND., INC. IT IS TO BE USED ONLY FOR THE PURPOSE FOR WHICH IT WAS SUBMITTED AND SHALL NOT HAVE ITS INFORMATION DISCLOSED OR REPRODUCED IN WHOLE OR IN PART FOR ANY PURPOSE WITHOUT PRIOR WRITTEN PERMISSION OF ROMAC IND., INC.</p>		<p>UNLESS OTHERWISE SPECIFIED</p> <ul style="list-style-type: none"> • DIMENSIONS ARE IN INCHES • DIMENSIONS NOT PERFECTLY TO SCALE 		<p>SIGNATURES</p> <p>DRAWN Tyler Matthews</p> <p>APPROVED Caitlin Boone</p>		<p>DATE</p> <p>4/25/2019</p> <p>4/26/2019</p>		<p>ROMAC INDUSTRIES INC.</p> <p>TITLE ALPHA END CAP, 4-12 INCH, XL</p>											
<p>MODEL NAME: ALPHA, END CAP, 4 INCH, XL, ASSEMBLY MODEL CAD #: CAD-045807</p>		<p>CONFIGURATION NAME: Default</p>		<p>THIRD ANGLE PROJECTION</p>		<p>LEGACY DRAWING #: DRAWING FILE NAME: ALPHA, END CAP, 4-12 INCH, XL</p>		<p>DWG. NO. CAD-045674</p>		<p>SIZE A</p>		<p>REV. NO. R0</p>		<p>SCALE 1:8</p>		<p>SHEET 1 OF 1</p>		<p>AUTHOR: Tyler Matthews</p>	