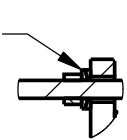
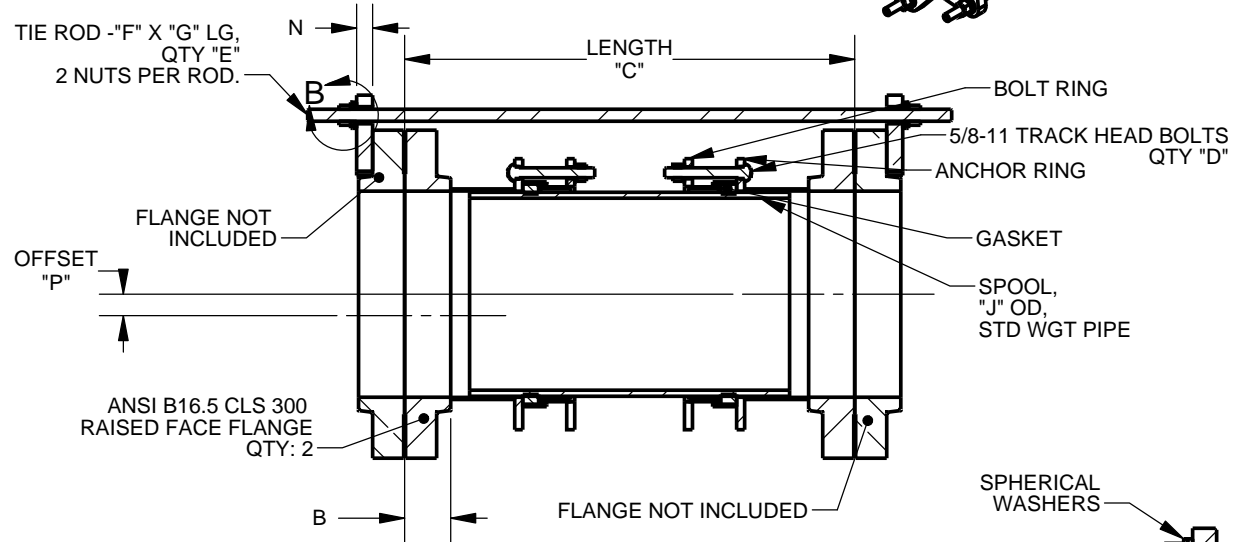
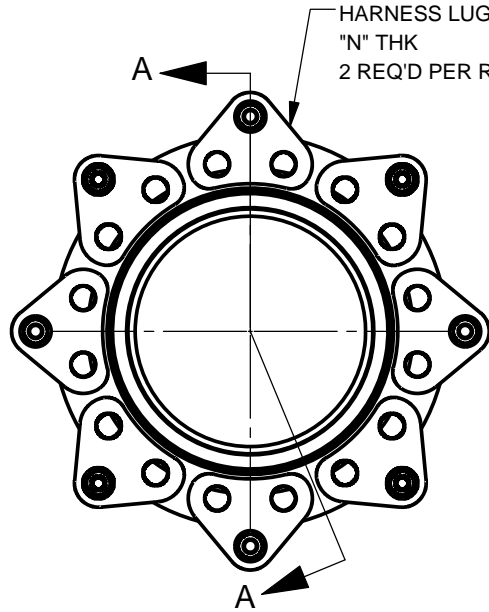
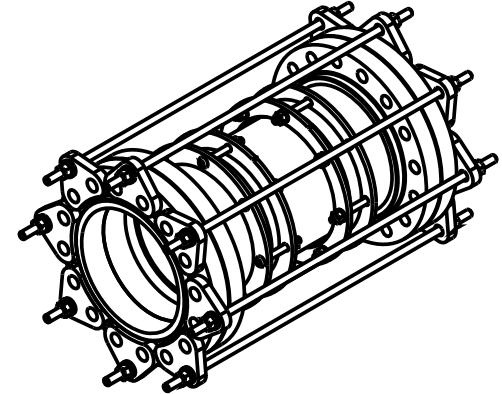


NOM SIZE	DIMENSIONS							BOLTS		TIE RODS				SPOOL		HARNESS			OFFSET	
	FLANGE OD		FLANGE THK		C - LENGTH			QTY	QTY	SIZE	LENGTH	OD	THK	LUG THK	AT MIN LENGTH	AT MAX LENGTH				
	A	B	NOM	MIN	MAX	D	E	F	G	J	K	N	P							
4	10.0	1.88	26.13	24.63	27.63	4	4	2	5/8	34.50	4.50	0.237	0.75	0.51	0.62					
6	12.5	2.06	26.38	24.88	27.88	6	3	5/8	35.25	6.63	0.28	0.75	0.50	0.62						
8	15.0	2.44	27.25	25.75	28.75	8	5	5/8	36.38	8.63	0.322	0.75	0.51	0.62						
10	17.5	2.62	27.50	26.00	29.00	8	5	3/4	38.13	10.75	0.365	1.0	0.50	0.62						
12	20.5	2.88	28.38	26.88	29.88	10	5	7/8	39.38	12.75	0.375	1.0	0.52	0.63						



NOTES:

1. MAXIMUM WORKING PRESSURE 450 PSI. MAXIMUM TEST PRESSURE 675 PSI
2. NSF 61 CERTIFIED COATING: FUSION BONDED EPOXY IS STANDARD. OTHER COATING AVAILABLE ON REQUEST.
3. FASTENERS: HSLA PER ASTM A588 IS STANDARD. STAINLESS STEEL TYPE 304 OR 316 PER ASTM A193 AVAILABLE.
4. ACCOMODATES DEFLECTION AND/OR OFFSET IN A SYSTEM PROVIDING A SOLID CONNECTION AFTER INSTALLATION.
5. NOT INTENDED TO PROVIDE LATERAL MOVEMENT IN PIPELINE.
6. CUSTOMER TO REFERENCE THIS DRAWING WHEN REQUESTING QUOTE OR PLACING ORDER.

SECTION A-A
SCALE 1 : 12

DETAIL B
SCALE 1 : 8

REVISIONS					
REV.	ZONE	DESCRIPTION	SHEET #	DATE	EDITOR
0		INITIAL RELEASE		8/8/17	SH

<p>PROPRIETARY NOTICE</p> <p>THIS DRAWING CONTAINS CONFIDENTIAL PROPRIETARY INFORMATION AND IS THE PROPERTY OF ROMAC IND., INC. IT IS TO BE USED ONLY FOR THE PURPOSE FOR WHICH IT WAS SUBMITTED AND SHALL NOT HAVE ITS INFORMATION DISCLOSED OR REPRODUCED IN WHOLE OR IN PART FOR ANY PURPOSE WITHOUT PRIOR WRITTEN PERMISSION OF ROMAC IND., INC.</p>	<p>UNLESS OTHERWISE SPECIFIED</p> <ul style="list-style-type: none"> • DIMENSIONS ARE IN INCHES • TOLERANCES ARE ON: <ul style="list-style-type: none"> 1 PL DECIMALS ± 0.060 2 PL DECIMALS ± 0.030 3 PL DECIMALS ± 0.010 • ANGLES ± 1° • FRACTIONS ± 1/64 • DIMENSIONS IN () ARE FOR REFERENCE ONLY 	<p>SIGNATURES</p> <p>DRAWN Sam Hill</p> <p>APPROVED Chris Nichols</p>	<p>DATE</p> <p>08/08/2017</p> <p>8/9/2017</p>
---	---	--	--

<p>ROMAC INDUSTRIES INC.</p> <p>TITLE EQUIPMENT CONNECTION FITTING ECF400 - 4-12" - ANSI B16.5 CLS 300</p>				
DWG. NO. CAD-036151	SIZE A	REV. NO. R0	SCALE NTS	SHEET 1 OF 1

<p>MODEL NAME: ECF400 - 12 - ANSI B16.5 CLS 300 - 400 PSI MODEL CAD #: CAD-003598 VERSION:</p>	<p>CONFIGURATION NAME: Default</p>	<p>THIRD ANGLE PROJECTION</p>	<p>LEGACY DRAWING #: DRAWING FILE NAME: ECF400 - 4 - 12 - ANSI B16.5 CLS 300 - CUSTOMER DRAWING</p>	<p>AUTHOR: Peter Nielsen</p>
--	------------------------------------	-------------------------------	---	------------------------------

FOR CUSTOMER USE