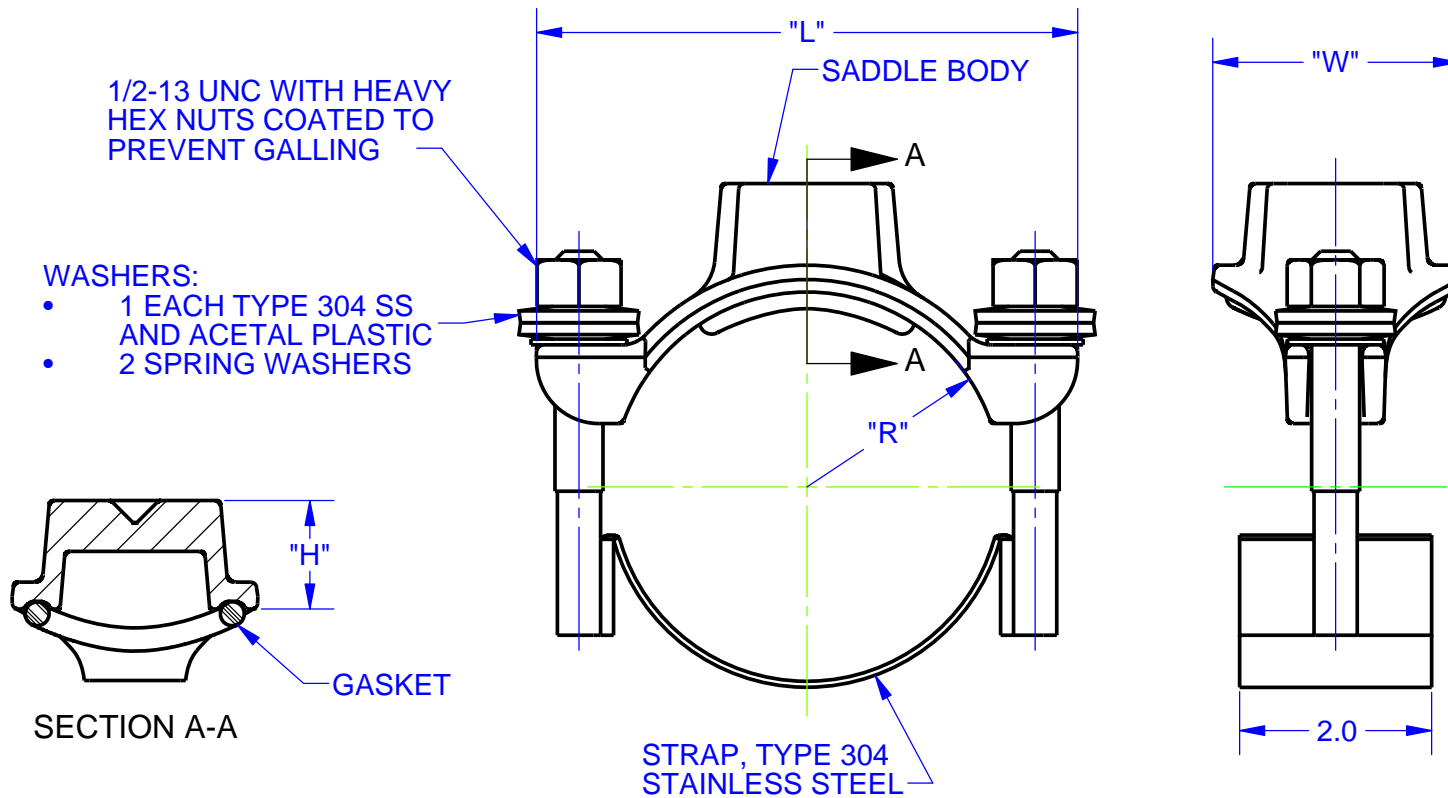


REVISIONS			
REV.	DESCRIPTION	DATE	EDITOR
0	INITIAL RELEASE	'15 SEP 28	DHE
1	TABLE DID NOT HAVE 2.13 SADDLE INFO OR HEIGHT COLUMN. O.D. PIPE RANGE CHANGED TO PIPE O.D.	12/09/2016	DJR




NOTE:

1. BODY: DUCTILE IRON PER ASTM A536 GRD 65-45-12.
2. COATING: NYLON, 10-12 MILS THICK.
3. THREAD: "IP" (NPT) OR "CC" PER AWWA C800 AVAILABLE.
4. STRAP, STUD, AND NUT: TYPE 304 STAINLESS STEEL:
 - WELDING: GMAW AND GTAW. CHEMICALLY CLEANED AND PASSIVATED.
 - 1/2-NC ROLL THREAD, WITH HEAVY HEX NUTS AND 1/2" FLAT WASHER.
5. SADDLES NOT TO BE USED ON HDPE PIPE WITH SDR GREATER THAN 26

1

DIMENSIONS					
NOM. SIZE	PIPE O.D.	LENGTH (L)	RADIUS (R)	WIDTH (W)	HEIGHT (H)
2"	2.13	4.50	1.07	2.68	1.3
	2.38	4.50	1.25	2.63	1.5
3"	3.50	5.56	2.21	2.63	1.5

<p>PROPRIETARY NOTICE</p> <p>THIS DRAWING CONTAINS CONFIDENTIAL PROPRIETARY INFORMATION AND IS THE PROPERTY OF ROMAC IND., INC. IT IS TO BE USED ONLY FOR THE PURPOSE FOR WHICH IT WAS SUBMITTED AND SHALL NOT HAVE ITS INFORMATION DISCLOSED OR REPRODUCED IN WHOLE OR IN PART FOR ANY PURPOSE WITHOUT PRIOR WRITTEN PERMISSION OF ROMAC IND., INC.</p>		<p>UNLESS OTHERWISE SPECIFIED</p> <p>DIMENSIONS ARE IN INCHES</p> <p>TOLERANCES ARE ON:</p> <p>1 PL DECIMALS ± 0.060</p> <p>2 PL DECIMALS ± 0.030</p> <p>3 PL DECIMALS ± 0.010</p> <p>ANGLES ± 1°</p> <p>FRACTIONS ± 1/64</p>		<p>SIGNATURES</p> <p>DRAWN</p> <p>Derek Richardson</p> <p>12/12/2016</p> <p>APPROVED</p> <p>Niels Thogersen</p> <p>12/12/2016</p>		<p>DATE</p>		<p>ROMAC INDUSTRIES INC.</p> <p>TITLE</p> <p>101H SADDLES</p> <p>2" - 3"</p>			
<p>MODEL NAME: 101S - CUSTOMER DRAWING</p> <p>CONFIGURATION NAME: 101H</p>		<p>MODEL CAD #: CAD-006787</p>				<p>DWG. NO.</p> <p>CAD-023243</p>		<p>SIZE</p> <p>A</p>	<p>REV. NO.</p> <p>R1</p>	<p>SCALE</p> <p>1:2</p>	<p>SHEET</p> <p>1 OF 1</p>