

FOR CUSTOMER USE

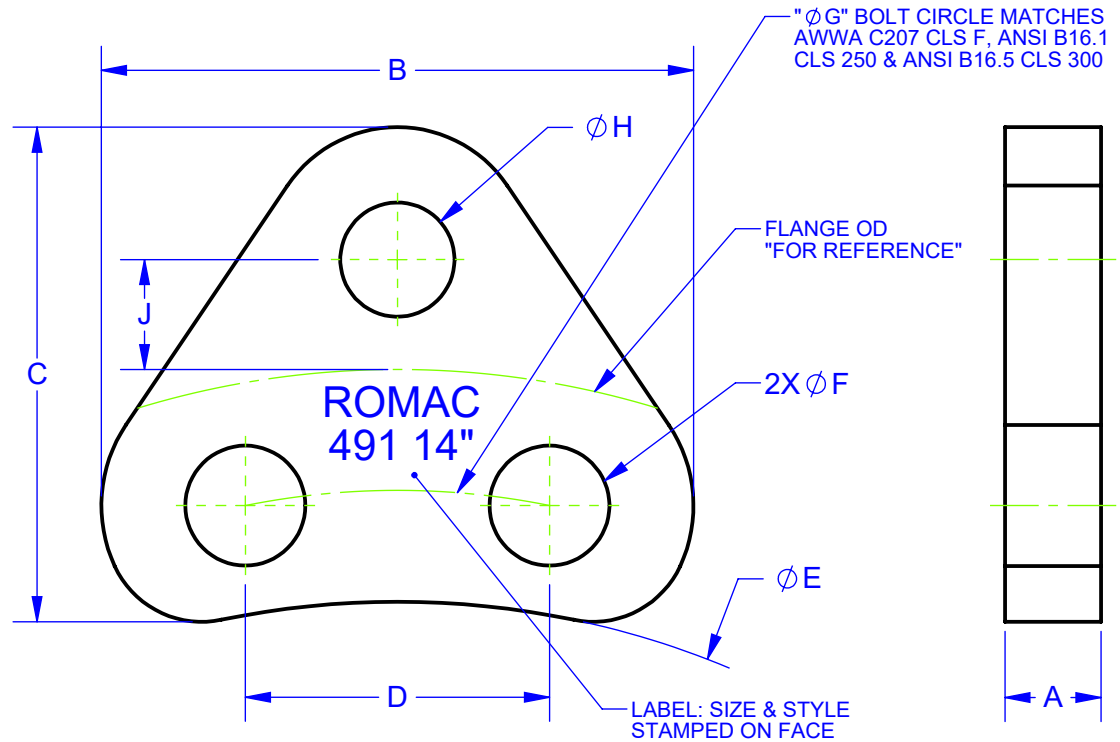
CAD-011545

LUG SIZE	TIE ROD QUANTITY 300 PSI	TIE ROD SIZE	LUG THICKNESS	LUG WIDTH	LUG HEIGHT	FLANGE HOLE CHORD LENGTH	LUG ID	FLANGE BOLT HOLE	BOLT CIRCLE	TIE ROD BOLT HOLE	FLANGE OD TO TIE ROD BC	WGT. EA (LBS)
			A	B	C	D	E	ØF	ØG	ØH	J	
14	4	1	1	6.17	5.15	3.17	18.00	1.25	20.25	1.19	1.07	5.3
16	4	1	1	7.02	5.40	3.52	20.13	1.38	22.50	1.19	1.07	6.3
18	6	1	1 1/4	6.73	5.47	3.23	22.38	1.38	24.75	1.19	1.07	7.7
20	7	1	1 1/4	7.02	5.61	3.52	24.63	1.38	27.00	1.19	1.07	8.3
24	6	1 1/4	1 3/4	8.18	6.82	4.18	28.88	1.63	32.00	1.44	1.25	16.5
30	9	1 1/4	1 3/4	8.89	6.82	4.39	35.88	1.88	39.25	1.44	1.25	17.7
36	9	1 1/2	2	9.51	7.79	4.51	41.88	2.13	46.00	1.69	1.50	24.7
42	12	1 1/2	2	9.60	7.90	4.60	48.75	2.13	52.75	1.69	1.56	25.3
48	12	1 3/4	2	9.77	8.39	4.77	56.80	2.13	60.75	1.94	1.84	27.4

REVISIONS			
REV.	DESCRIPTION	DATE	EDITOR
0	INITIAL RELEASE IN PDM, UPDATED TO MATCH FAB DRAWING, ADDED NOTE 11.	4/28/14	PNN
1	UPDATED NOTES TO CLARIFY ADDITIONAL LUG QUANTITIES ABOVE 300 PSI.	1/25/2016	N THOGERSEN
2	UPDATED NOTES FOR PRESSURES ABOVE CATALOG. UPDATED DIMENSIONS.	1/9/2024	MLW

NOTES:

- LUG DESIGN ALLOWS MAXIMUM CLEARANCE BETWEEN PIPE OR FLANGE HUB OD AND LUG. CUSTOMER TO VERIFY LUG CLEARANCE OVER FLANGE HUB FOR THREADED DI FLANGES. SEE DIAMETER "E".
- DIMENSION "J" IS FROM OD OF FLANGE TO TIE ROD BOLT CIRCLE.
- EACH TIE ROD REQUIRES 2 LUGS, ONE LOCATED ON THE OUTSIDE OF EACH FLANGED CONNECTION.
- COATING: BARE, SHOPCOAT PAINT, OR NSF 61 FUSION BONDED EPOXY, BLACK
- MIN. TIE ROD MATERIAL = ASTM A193 B7, (ALLOY STEEL), B8 (304 SS), OR B8M (316 SS)
- PIPE THRUST (LBS) = 0.7854 X PRESSURE X [PIPE OD]<sup>2</sup>
- TIE ROD QUANTITIES LISTED IN TABLE WILL ACCOMMODATE 300 PSI MAX.
- FOR HIGHER PRESSURES CONTRACT ROMAC ENGINEERING.
- LUG MATERIAL: STEEL A36, STAINLESS A240 TYPE 304 OR 316
- SPECIFY TIE ROD LENGTH WHEN ORDERING. NUTS REQUIRED PER TIE ROD, (DOUBLE NUT CONFIGURATION.) TIE RODS SOLD SEPERATELY, SPECIFY LENGTH WHEN ORDERING.
- FLANGE BOLTS SHALL BE GRADE 8 OR BETTER.



<p>PROPRIETARY NOTICE</p> <p>THIS DRAWING CONTAINS CONFIDENTIAL PROPRIETARY INFORMATION AND IS THE PROPERTY OF ROMAC IND., INC. IT IS TO BE USED ONLY FOR THE PURPOSE FOR WHICH IT WAS SUBMITTED AND SHALL NOT HAVE ITS INFORMATION DISCLOSED OR REPRODUCED IN WHOLE OR IN PART FOR ANY PURPOSE WITHOUT PRIOR WRITTEN PERMISSION OF ROMAC IND., INC.</p>		<p>UNLESS OTHERWISE SPECIFIED</p> <p>DIMENSIONS ARE IN INCHES</p> <p>TOLERANCES ARE ON:</p> <p>1 PL DECIMALS ± 0.060</p> <p>2 PL DECIMALS ± 0.030</p> <p>3 PL DECIMALS ± 0.010</p> <p>ANGLES ± 1°</p> <p>FRACTIONS ± 1/64</p>		<p>SIGNATURES</p> <p>DATE</p>		<p>ROMAC INDUSTRIES INC.</p> <p>TITLE</p> <p>HARNESS LUG - 14 THRU 48 - ANSI CLS 250 &amp; 300 - AWWA CLS F - STYLE 491</p>					
		<p>DRAWN</p> <p>Peter Nielsen</p> <p>APPROVED</p> <p>Derek Sorenson</p>		<p>04/28/2014</p> <p>1/12/2024</p>		<p>DWG. NO.</p> <p>CAD-011545</p>		<p>SIZE</p> <p>A</p>	<p>REV. NO.</p> <p>R1</p>	<p>SCALE</p> <p>1:2</p>	<p>SHEET</p> <p>1 OF 1</p>