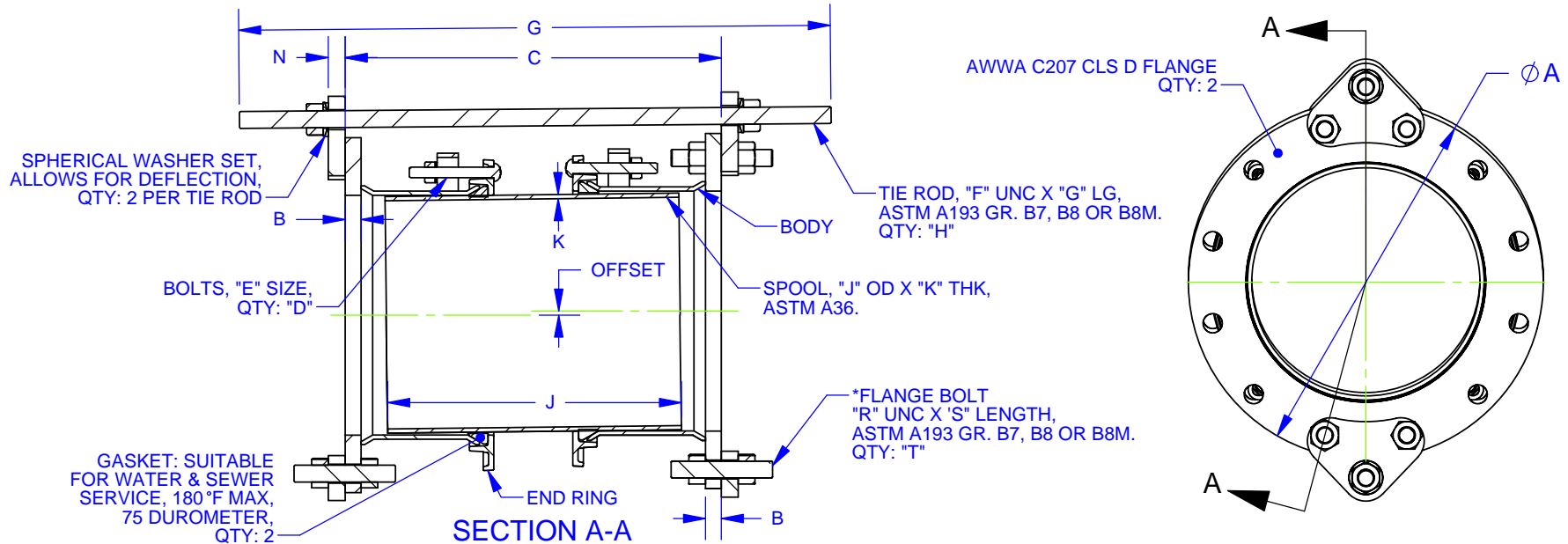


CAD-005065

NOM SIZE	DIMENSIONS					BOLTS		TIE RODS				SPOOL		HARNES LUG THK	*FLANGE BOLT			OFFSET		MAX DEFLECTION DEGREES	APPROX WEIGHT LBS	NOM SIZE
	FLANGE OD	FLANGE THK	C - LENGTH			QTY	SIZE		SIZE	LENGTH	QTY	OD	THK		SIZE	LENGTH	QTY	AT MIN LENGTH	AT MAX LENGTH			
			A	B	NOM		MIN	MAX														
14	21.00	0.94	23.75	22.25	25.25	16	5/8 - 11	1	35.00	2	14.00	0.25	1.00	1	6.50	8	0.25	0.37	2.25	286	14	
16	23.50	1.00	24.75	23.25	26.25	20	5/8 - 11	1	36.25	2	16.00	0.25	1.00	1	6.75	8	0.25	0.36	2.00	334	16	
18	25.00	1.06	24.75	23.25	26.25	20	5/8 - 11	1	36.50	3	18.00	0.25	1.00	1-1/8	7.00	12	0.25	0.35	2.00	391	18	
20	27.50	1.13	24.88	23.38	26.38	24	5/8 - 11	1	37.25	4	20.00	0.25	1.00	1-1/8	7.50	16	0.25	0.35	2.00	472	20	
24	32.00	1.25	25.13	23.63	26.63	28	5/8 - 11	1	38.00	5	24.00	0.25	1.00	1-1/4	8.00	20	0.25	0.35	2.00	631	24	
30	38.75	1.38	26.38	24.88	27.88	32	5/8 - 11	1-1/4	40.75	5	30.00	0.38	1.25	1-1/4	8.75	20	0.25	0.34	1.75	969	30	
36	46.00	1.63	26.88	25.38	28.38	36	5/8 - 11	1-1/4	41.75	7	36.00	0.38	1.25	1-1/2	10.00	28	0.25	0.34	1.75	1412	36	
42	53.00	1.75	28.63	27.13	30.13	40	5/8 - 11	1-1/4	44.00	9	42.00	0.38	1.25	1-1/2	10.50	36	0.25	0.33	1.50	1862	42	
48	59.50	1.88	30.75	29.25	32.25	44	5/8 - 11	1-1/2	47.75	8	48.00	0.38	1.75	1-1/2	11.50	32	0.25	0.32	1.25	2282	48	
54	66.25	2.13	31.25	29.75	32.75	48	5/8 - 11	1-1/2	49.25	10	54.00	0.38	1.75	1-3/4	12.75	40	0.25	0.32	1.25	3018	54	
60	73.00	2.25	31.50	30.00	33.00	56	5/8 - 11	1-1/2	49.75	13	60.00	0.38	1.75	1-3/4	12.00	52	0.25	0.32	1.25	3670	60	
66	80.00	2.50	34.88	33.38	36.38	60	5/8 - 11	1-3/4	54.75	11	66.00	0.38	2.00	1-3/4	13.00	44	0.25	0.30	1.00	4441	66	
72	86.50	2.63	35.13	33.63	36.63	64	5/8 - 11	1-3/4	55.25	13	72.00	0.38	2.00	1-3/4	13.25	52	0.25	0.30	1.00	5128	72	



- NOTES:
- NSF 61 CERTIFIED COATING: FUSION BONDED EPOXY IS STANDARD. OTHER COATINGS AVAILABLE UPON REQUEST.
 - FASTENERS: HSLA PER ASTM A588 IS STANDARD. STAINLESS STEEL TYPE 304 OR 316 PER ASTM A193 AVAILABLE UPON REQUEST.
 - PRESSURE RATED UP TO FLANGES PROVIDED; 14" - 72" AWWA CLS D 150 PSIG WORKING, 225 PSIG TEST. FOR HIGHER PRESSURES, AWWA CLS E OR CLS F FLANGES AVAILABLE.
 - ACCOMODATES DEFLECTION AND/OR OFFSET IN A SYSTEM PROVIDING A SOLID CONNECTION AFTER INSTALLATION
 - NOT INTENDED TO PROVIDE LATERAL MOVEMENT IN PIPELINE.
 - *FLANGE BOLTS PROVIDED ARE ALL THREAD STUDS WITH TWO NUTS PER STUD AND ARE USED ONLY WHERE HARNES LUGS BOLT TO FLANGE. USER TO PROVIDE REMAINING FLANGE BOLTS.

REVISIONS			
REV.	DESCRIPTION	DATE	APPROVED
0	INITIAL RELEASE IN PDM, UPDATED TO CURRENT DESIGN	1/24/2013	PNN
1	FIXED DIM "C"	5/21/2015	NST
2	TEST PRESSURE INCORRECTLY WAS 188PSI	7/19/2016	NST

<p>PROPRIETARY NOTICE</p> <p>THIS DRAWING CONTAINS CONFIDENTIAL PROPRIETARY INFORMATION AND IS THE PROPERTY OF ROMAC IND., INC. IT IS TO BE USED ONLY FOR THE PURPOSE FOR WHICH IT WAS SUBMITTED AND SHALL NOT HAVE ITS INFORMATION DISCLOSED OR REPRODUCED IN WHOLE OR IN PART FOR ANY PURPOSE WITHOUT PRIOR WRITTEN PERMISSION OF ROMAC IND., INC.</p>		<p>UNLESS OTHERWISE SPECIFIED</p> <p>DIMENSIONS ARE IN INCHES</p> <p>TOLERANCES ARE ON:</p> <p>1 PL DECIMALS ± 0.060</p> <p>2 PL DECIMALS ± 0.030</p> <p>3 PL DECIMALS ± 0.010</p> <p>ANGLES ± 1°</p> <p>FRACTIONS ± 1/64</p>		<p>SIGNATURES</p> <p>DATE</p> <p>7/19/2016</p>		<p>DATE</p> <p>01/24/2013</p>		<p>ROMAC INDUSTRIES INC.</p> <p>TITLE</p> <p>ECF400 - 14 - 72 - AWWA CLS D - STANDARD LENGTHS</p>	
<p>DRAWN</p> <p>Peter Nielsen</p>		<p>APPROVED</p> <p>Niels Thogersen</p>		<p>DATE</p> <p>01/24/2013</p>		<p>DATE</p> <p>7/19/2016</p>		<p>DWG. NO.</p> <p>CAD-005065</p>	
						<p>SIZE</p> <p>A</p>		<p>REV. NO.</p> <p>R2</p>	
						<p>SCALE</p> <p>NTS</p>		<p>SHEET</p> <p>1 OF 1</p>	

FOR CUSTOMER USE