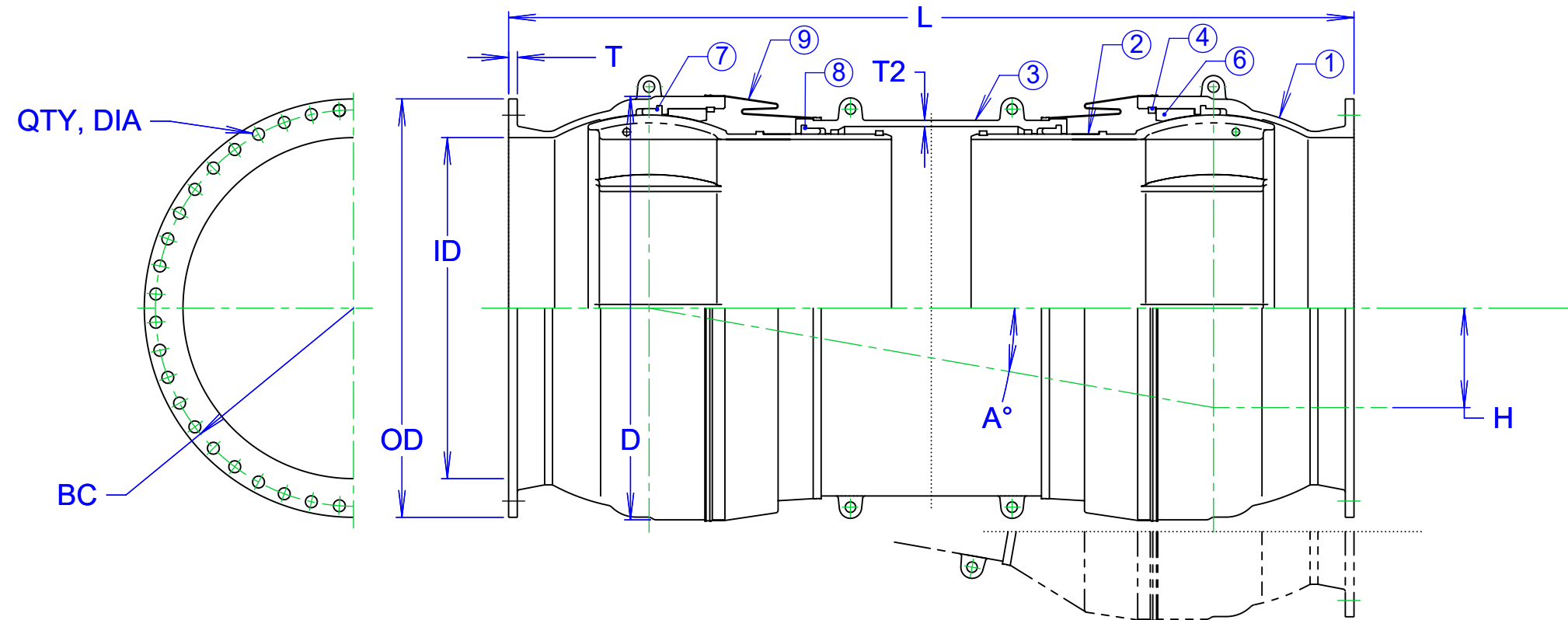


| REVISIONS |   |            |             |
|-----------|---|------------|-------------|
| REV.      | DESCRIPTION   | DATE       | APPROVED    |
| 0         | INIITAL RELEASE   | 7/31/2003  | DH EATON    |
| 1         | ADDED 20" OFFSET SIZE   | 2/20/2008  | DH EATON    |
| 2         | NAME WAS FLEXIJOINT, UPDATED FORMAT, DWG WAS B2256-B            | 12/14/2012 | N THOGERSEN |
| 3         | CASING MTL WAS SBR. DIM H WAS 20.0. WGT WAS 14500, 15750, 17045 | 12/29/2021 | JJM         |



| DIMENSIONS |          |      |       |         |                           |     |        |      |      |      |      |      |                   |
|------------|----------|------|-------|---------|---------------------------|-----|--------|------|------|------|------|------|-------------------|
| SIZE       | OFFSET H | ØD   | L     | ANGLE A | EXPANSION/<br>CONTRACTION | T2  | FLANGE |      |      |      | BOLT |      | EST WGT.,<br>LBS. |
|            |          |      |       |         |                           |     | OD     | BC   | ID   | T    | QTY  | DIA  |                   |
| 54         | 11.8     | 67.0 | 112.2 | 10.0°   | +7.9/ -5.9                | 1.0 | 66.3   | 62.8 | 54.0 | 1.38 | 44   | 1.88 | 14,400            |
| 54         | 15.7     | 67.0 | 133.9 | 10.0°   | +13.8/ -9.8               | 1.0 | 66.3   | 62.8 | 54.0 | 1.38 | 44   | 1.88 | 15,700            |
| 54         | 19.7     | 67.0 | 156.3 | 10.0°   | +13.8/ -9.8               | 1.0 | 66.3   | 62.8 | 54.0 | 1.38 | 44   | 1.88 | 17,200            |

| PART NO. | QTY. | NAME         | MATERIAL     |
|----------|------|--------------|--------------|
| 1        | 2    | CASING       | DUCTILE IRON |
| 2        | 2    | BALL SLEEVE  | DUCTILE IRON |
| 3        | 1    | SLEEVE       | DUCTILE IRON |
| 4        | 2    | LOCKRING     | DUCTILE IRON |
| 5        | 2    | LOCKRING     | DUCTILE IRON |
| 6        | 2    | CASING PIECE | DUCTILE IRON |
| 7        | 2    | RUBBER RING  | SBR          |
| 8        | 2    | RUBBER RING  | SBR          |
| 9        | 2    | CASING COVER | CR           |

NOTE:  
 1. FUSION BONDED EPOXY APPLIED TO ALL DUCTILE IRON COMPONENTS.  
 2. FLANGE COMPATIBLE WITH CLASS 150 DRILLING.

| PROPRIETARY NOTICE  | UNLESS OTHERWISE SPECIFIED                        | SIGNATURES             | DATE       |
|---|---|------------------------|------------|
| THIS DRAWING CONTAINS CONFIDENTIAL PROPRIETARY INFORMATION AND IS THE PROPERTY OF ROMAC IND., INC. IT IS TO BE USED ONLY FOR THE PURPOSE FOR WHICH IT WAS SUBMITTED AND SHALL NOT HAVE ITS INFORMATION DISCLOSED OR REPRODUCED IN WHOLE OR IN PART FOR ANY PURPOSE WITHOUT PRIOR WRITTEN PERMISSION OF ROMAC IND., INC. | DIMENSIONS ARE IN INCHES<br>DRAWING NOT TO SCALE. | DRAWN<br>JOSHUA MORMAN | 12/29/2021 |
|   |   | APPROVED<br>SAM HILL   | 2/1/2022   |

|                        |  |                |               |                 |
|------------------------|--|----------------|---------------|-----------------|
|                        | ROMAC INDUSTRIES INC.                              |                |               |                 |
|                        | TITLE<br>FJ-RESTRAINT<br>54", DOUBLE BALL, FLANGED |                |               |                 |
| DWG. NO.<br>CAD-004818 | SIZE<br>B  | REV. NO.<br>R3 | SCALE<br>1:30 | SHEET<br>1 OF 1 |

MODEL NAME:  
CONFIGURATION NAME:

MODEL CAD #:

LEGACY DRAWING # B2256-B  
DRAWING FILE NAME: FJ 54 INCH CUSTOMER DRAWING

AUTHOR: