

FOR CUSTOMER USE

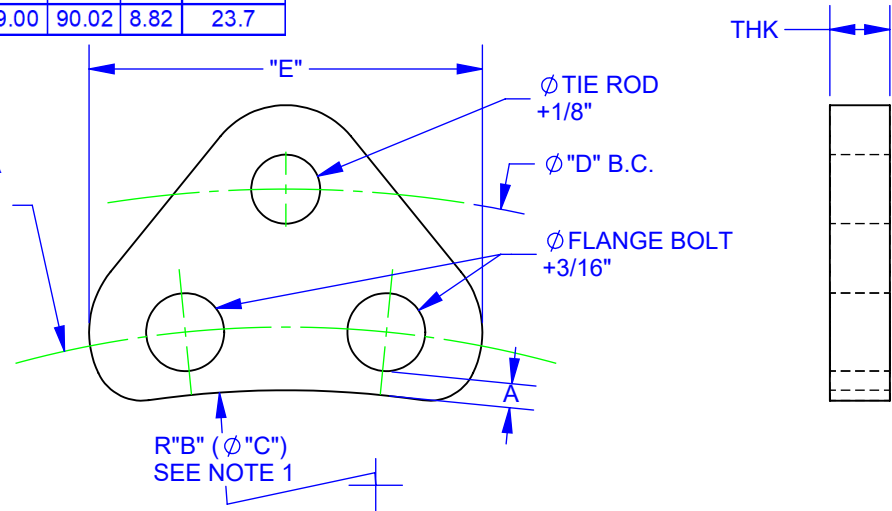
HARNESS LUG SCHEDULE

FLG SIZE	LUG THK	TIE ROD QUANTITY					TIE ROD	A	R "B"	Ø "C"	B.C. Ø "D"	E	WGT, EA.
		50 PSI	100 PSI	150 PSI	200 PSI	275 PSI							
14	1	2	2	2	3	3	1	0.47	8.34	16.68	23.13	7.60	6.0
16	1	2	2	2	3	4	1	0.41	9.66	19.32	25.63	6.90	5.5
18	1	2	2	3	4	5	1	0.28	10.45	20.90	27.13	7.44	6.0
20	1	2	3	4	5	6	1	0.38	11.50	23.00	29.63	6.91	5.6
24	1	2	3	5	6	9	1	0.42	13.64	27.28	34.13	8.11	7.0
30	1 1/4	2	3	5	6	9	1 1/4	0.41	16.91	33.82	41.25	7.53	9.0
36	1 1/4	3	5	7	9	12	1 1/4	0.50	20.06	40.12	48.50	8.19	10.6
42	1 1/4	3	6	9	12	16	1 1/4	0.60	23.34	46.68	55.50	8.31	11.2
48	1 3/4	3	6	8	11	NA	1 1/2	0.78	26.41	52.82	62.50	7.99	16.9
54	1 3/4	4	7	10	14	NA	1 1/2	0.81	29.63	59.26	69.25	8.98	19.1
60	1 3/4	5	9	13	17	NA	1 1/2	0.81	32.88	65.76	76.00	8.68	18.7
66	2	4	8	11	15	20	1 3/4	1.06	36.00	72.00	83.50	9.09	25.5
72	2	5	9	13	18	NA	1 3/4	0.81	39.50	79.00	90.02	8.82	23.7

NOTES:

- ROMAC HARNESS LUG MAXIMUM CLEARANCE BETWEEN FLANGE HUB OD AND LUG RADIUS FOR MAJORITY OF THREADED DI FLANGES.
- CUSTOMER TO VERIFY LUG CLEARANCE OVER FLANGE HUB FOR THREADED DI FLANGES. SEE DIAMETER C.
- EACH TIE ROD REQUIRES 2 LUGS, ONE LOCATED ON THE OUTSIDE OF EACH FLANGED CONNECTION.
- LUG MATERIAL: ASTM A36 STEEL, STAINLESS A240 TYPE 304 OR TYPE 316.
- TIE ROD MATERIAL: ASTM A193 B7 (ALLOY STEEL), B8 (304 SS), OR B8M (316SS).
- COATING: BARE, SHOPCOAT PAINT, OR NSF 61 FUSION BONDED EPOXY, BLACK.
- 4 NUTS REQUIRED PER TIE ROD (DOUBLE NUT CONFIGURATION).
- TIE RODS SOLD SEPARATELY, SPECIFY LENGTH WHEN ORDERING.

BOLT CIRCLE, MATCHES AWWA C207 CLS D OR E AND ANSI B16.1 CLS 125 OR ANSI B16.5 CLS 150



REVISIONS

REV.	DESCRIPTION	DATE	EDITOR
0	INITIAL RELEASE REPLACES B2368-A	10/08/2009	SH
1	275 PSI QTY WAS INCORRECT ON DRAWING, DID NOT MATCH CATALOG. 24" & 30" WAS 8, 36" WAS 11, 42" WAS 15, 48" WAS 13, 54" WAS 17, 60" WAS 21, 66" WAS 19, 72" WAS 22.	7/25/2012	NST III
2	UPDATED HARNESS LUG COMPATABILITY WITH 275 PSI	4/29/2024	MLW

PROPRIETARY NOTICE

THIS DRAWING CONTAINS CONFIDENTIAL PROPRIETARY INFORMATION AND IS THE PROPERTY OF ROMAC IND., INC. IT IS TO BE USED ONLY FOR THE PURPOSE FOR WHICH IT WAS SUBMITTED AND SHALL NOT HAVE ITS INFORMATION DISCLOSED OR REPRODUCED IN WHOLE OR IN PART FOR ANY PURPOSE WITHOUT PRIOR WRITTEN PERMISSION OF ROMAC IND., INC.

UNLESS OTHERWISE SPECIFIED

- DIMENSIONS ARE IN INCHES
- DRAWING NOT TO SCALE

SIGNATURES

DRAWN  
Max Leung-Wagner

APPROVED  
Derek Sorenson

DATE

04/29/2024

5/9/2024



ROMAC INDUSTRIES INC.

TITLE  
HARNESS LUGS, 14"-72" STYLE 490 CLS D & E, 125/150 HIGH HUB CLEARANCE

DWG. NO. B3292-A      SIZE A      REV. NO. 2      SCALE NTS      SHEET 1 OF 1

THIRD ANGLE PROJECTION



CAD No.: CAD-074003

AUTHOR: Chris Nichols

RELEASED