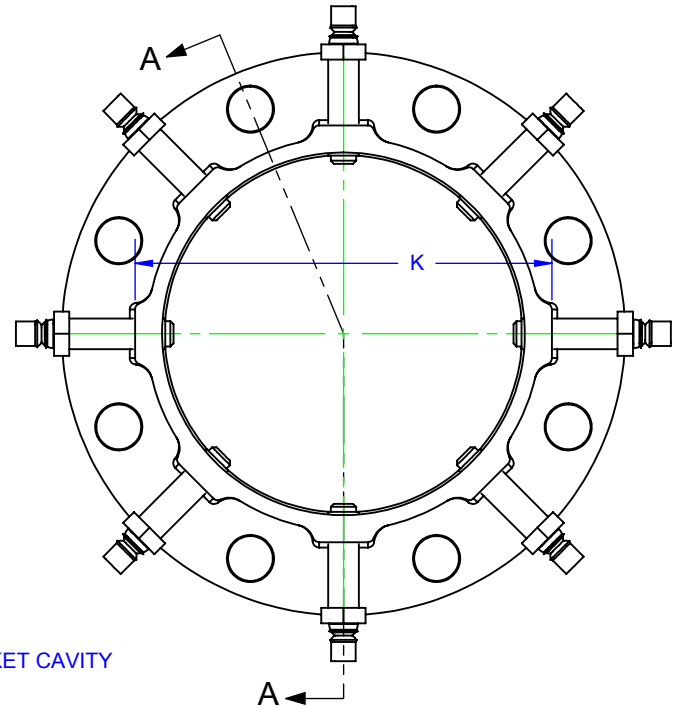
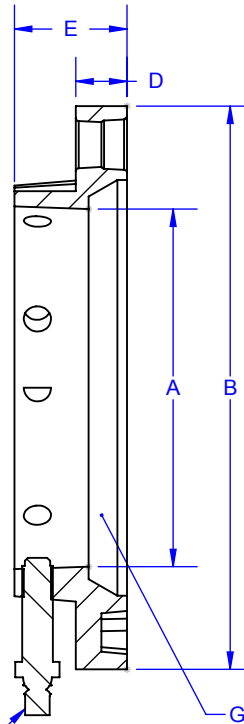
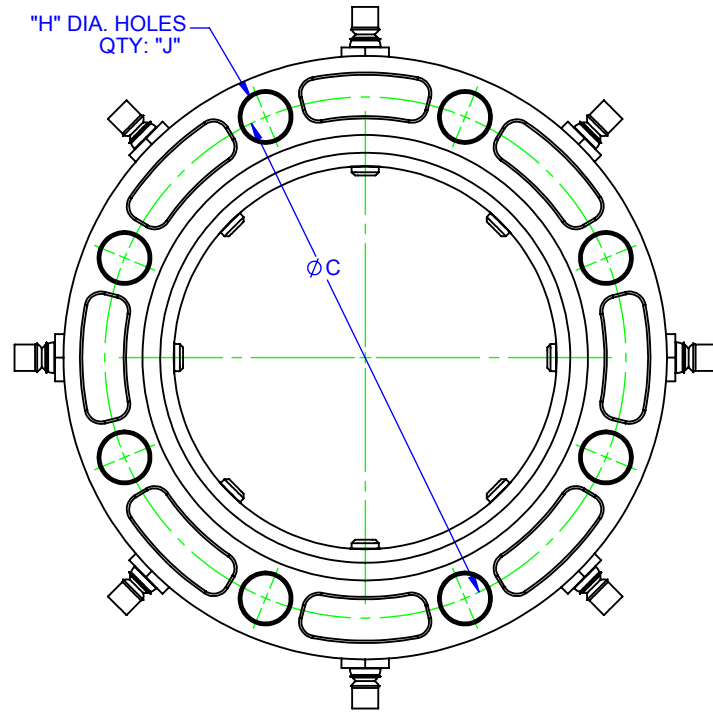


REVISIONS			
REV	DESCRIPTION	DATE	APPROVED
0	INITIAL RELEASE	10/7/09	PNN
1	8" SIZE, "E" WAS 2.23	1/6/16	SH
2	NO LONGER OFFER EPOXY COATING	4/12/2018	CRN



5/8"-11 X 2" UNC SET SCREW,
4140 STEEL ALLOY WITH 7/16",
12 PT HEAD,
QTY: "F"

SECTION A-A

GASKET CAVITY

NOTES:

- FLANGE IN ACCORDANCE WITH ANSI CLASS 150 FLANGE DRILLING.
- COATING: SHOP COAT APPLIED TO THE CASTING FOR CORROSION PROTECTION IN TRANSIT.
- GASKET: SBR COMPOUNDED FOR WATER AND SEWER SERVICE IN ACCORDANCE WITH ASTM D 2000 MBA 710. NBR AND EPDM ALSO AVAILABLE ON REQUEST.
- CAN BE USED ON DUCTILE IRON AND STEEL PIPE. NOT FOR USE ON PVC/PLASTIC PIPE OR PLAIN END MECHANICAL JOINT FITTINGS. NOT RECOMMENDED FOR USE ON CLASS 50 DUCTILE IRON PIPE.
- ALL MATERIAL DUCTILE IRON PER ASTM A536, GRADE 65-45-12 UNLESS OTHERWISE SPECIFIED.

SIZE	I.D.	O.D.	B.C.	FLANGE		# OF SET SCREWS	BOLT HOLES			O.D. TO	WORKING PRESSURE	MAX JOINT DEFLECTION	APPROX WEIGHT (LBS.)
	A	B	C	D	E		H	J	K				
4"	4.90	9.00	7.50	1.02	2.03	4	0.750	8	6.25	300	3°	11#	
6"	7.00	11.00	9.50	1.00	2.22	8	0.875	8	8.31	300	2°	16#	
8"	9.12	13.00	11.75	1.15	2.20	8	0.875	8	10.52	300	2°	19#	
10"	11.18	16.00	14.25	1.20	2.45	12	1.00	12	12.45	250	2°	31#	
12"	13.30	19.00	17.00	1.25	2.50	12	1.00	12	15.00	175	1.5°	43#	

PROPRIETARY NOTICE
THIS DRAWING CONTAINS CONFIDENTIAL PROPRIETARY INFORMATION AND IS THE PROPERTY OF ROMAC IND., INC. IT IS TO BE USED ONLY FOR THE PURPOSE FOR WHICH IT WAS SUBMITTED AND SHALL NOT HAVE ITS INFORMATION DISCLOSED OR REPRODUCED IN WHOLE OR IN PART FOR ANY PURPOSE WITHOUT PRIOR WRITTEN PERMISSION OF ROMAC IND., INC.

UNLESS OTHERWISE SPECIFIED
DIMENSIONS ARE IN INCHES
TOLERANCES ARE ON:
1 PL DECIMALS ± .060
2 PL DECIMALS ± .030
3 PL DECIMALS ± .010
ANGLES ± 1°
FRACTIONS ± 1/64

SIGNATURES
DRAWN
C. NICHOLS 4/12/2018
CHECKED
APPROVAL ORGANIZATIONS
ENGINEERING



ROMAC INDUSTRIES INC.,
BOTHELL, WA

TITLE
4" - 12" FIELD FLANGE

DWG. NO.	SIZE	REV. NO.	SCALE	SHEET
B3290-A	A	3	NTS	1 OF 1