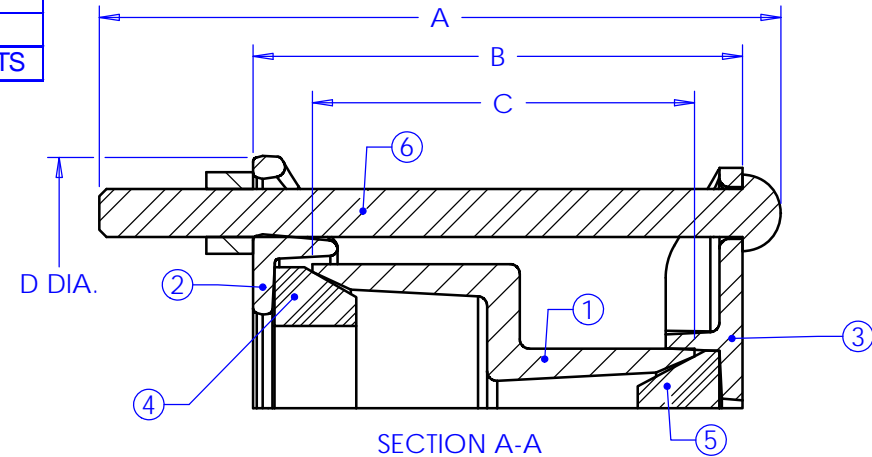
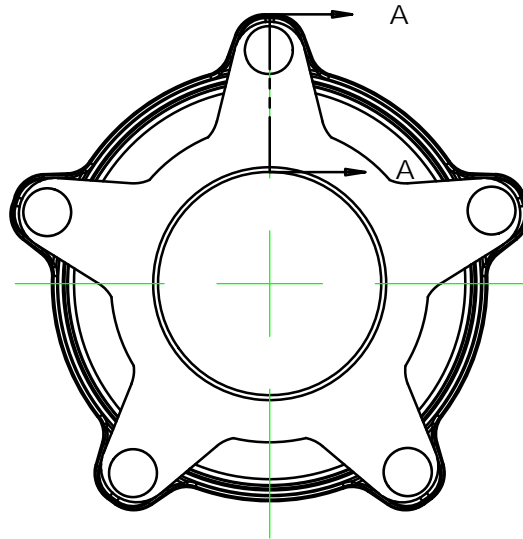


B3081-A

PART NO	QTY	NAME	DESCRIPTION
1	1	CENTER RING	DUCTILE IRON
2	1	END RING	DUCTILE IRON, LARGE END
3	1	END RING	DUCTILE IRON, SMALL END
4	1	501 GASKET	SBR RUBBER, LARGE END
5	1	501 GASKET	SBR RUBBER, SMALL END
6	1	BOLT	5/8-11 UNC TRACKHEAD WITH HVY HEX NUTS

REVISIONS			
REV.	DESCRIPTION	DATE	APPROVED
0	INITIAL RELEASE	8/20/08	PZ
1	ADDED 20X18	3/16/10	SH



NOTES:

- 4X3 USES 4" 501 COMPONENTS WITH THE EXCEPTION OF A LARGER GASKET ON SMALL END.
- COATING: SHOPCOAT STANDARD. FUSION BONDED EPOXY AVAILABLE UPON REQUEST.
- BOLTS & NUTS: HSLA STANDARD. STAINLESS AVAILABLE UPON REQUEST
- MAX WORKING PRESSURE 260 PSI.

SIZE	A	B	C	D	BOLTS	
					NO.	LENGTH
4 X 3	8.50	6.50	5.0	8.63	4	8.00
6 X 4	8.50	6.50	5.0	11.19	5	8.00
8 X 6	8.50	6.50	5.0	13.44	6	8.00
10 X 8	11.00	8.00	6.0	16.44	7	10.50
12 X 10	12.00	9.50	7.0	18.56	8	11.50
14 X 12	12.00	9.50	7.0	21.25	9	11.50
16 X 14	12.00	9.50	7.0	23.25	10	11.50
18 X 16	12.00	9.50	7.0	24.94	12	11.50
20 X 18	12.00	9.50	7.0	26.75	12	11.50
22 X 20	12.00	9.50	7.0	28.88	13	11.50
24 X 22	14.50	11.50	8.5	31.50	14	15.00

<p>PROPRIETARY NOTICE</p> <p>THIS DRAWING CONTAINS CONFIDENTIAL PROPRIETARY INFORMATION AND IS THE PROPERTY OF ROMAC IND., INC. IT IS TO BE USED ONLY FOR THE PURPOSE FOR WHICH IS WAS SUBMITTED AND SHALL NOT HAVE IT'S INFORMATION DISCLOSED OR REPRODUCED IN WHOLE OR IN PART FOR ANY PURPOSE WITHOUT PRIOR WRITTEN PERMISSION OF ROMAC IND., INC.</p>	<p>UNLESS OTHERWISE SPECIFIED</p> <p>DIMENSIONS ARE IN INCHES</p> <p>TOLERANCES ARE ON: 1 PL DECIMALS ± .060 2 PL DECIMALS ± .030 3 PL DECIMALS ± .010 ANGLES ± 1° FRACTIONS ± 1/64</p>	SIGNATURES			<p>ROMAC INDUSTRIES INC., BOTHELL, WA</p>			
		DRAWN			TITLE			
		CHECKED			RC 501 REDUCING COUPLING			
APPROVAL ORGANIZATIONS		DWG. NO.	SIZE	REV. NO.	SCALE	SHEET		
PROP.CUST.APP. ORG.		B3081-A	A	1	NTS	1 OF 1		