

CAD-011062

LUG SIZE	TIE ROD QUANTITY PER MAXIMUM PRESSURE					LUG ID	FLANGE BOLT HOLE	BOLT CIRCLE	FLANGE HOLE CHORD LENGTH	LUG WIDTH	LUG HEIGHT	WGT. EA (LBS)
	50 PSI	100 PSI	150 PSI	200 PSI	250 PSI							
4	2	2	2	2	2	6.38	0.75	7.50	2.87	5.12	4.92	5.9
6	2	2	2	2	2	8.16	0.88	9.50	3.64	5.89	5.08	6.9
8	2	2	2	3	3	10.38	0.88	11.75	4.50	6.75	5.27	8.3
10	2	2	3	4	5	12.68	1.00	14.25	3.69	5.94	4.97	7.1
12	2	3	4	5	NA	15.12	1.00	17.00	4.40	6.65	5.29	8.5
14	2	4	5	NA	NA	16.84	1.19	18.75	4.85	7.10	5.45	9.3
16	2	4	NA	NA	NA	19.32	1.19	21.25	4.15	6.40	5.26	8.2
18	3	5	NA	NA	NA	20.90	1.25	22.75	4.44	6.69	5.23	8.4
20	4	NA	NA	NA	NA	23.00	1.25	25.00	3.91	6.16	5.32	8.0
24	5	NA	NA	NA	NA	27.28	1.38	29.50	4.61	6.86	5.45	9.1

REVISIONS			
REV.	DESCRIPTION	DATE	APPROVED
0	INITIAL RELEASE IN PDM, REMOVED NOTE ABOUT TEST PSI, ADDED LUG WIDTH & HEIGHT	3/24/2014	PNN
1	TITLE WAS 3 THRU 24	10/4/2016	N THOGERSEN

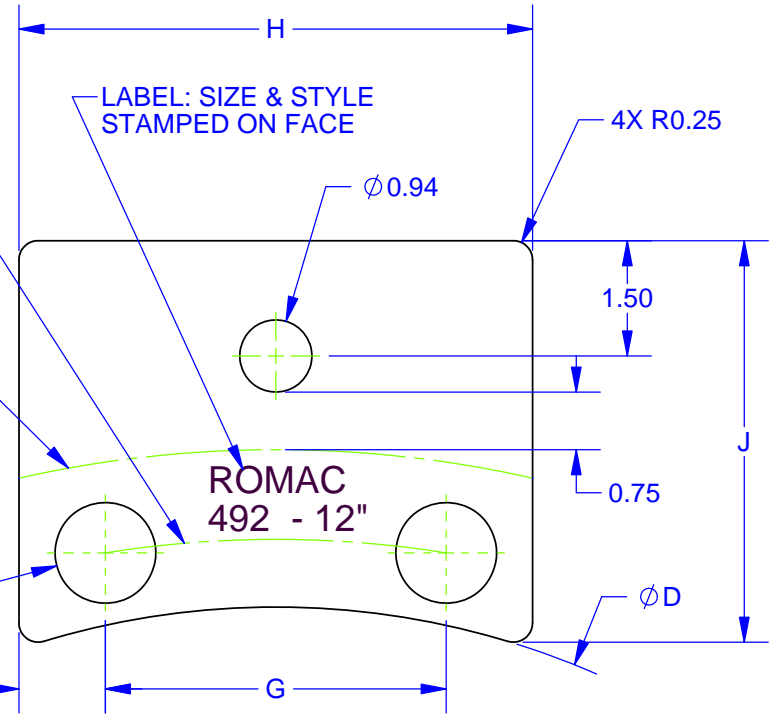
FOR CUSTOMER USE

NOTE:

- LUG DESIGN ALLOWS MAXIMUM CLEARANCE BETWEEN PIPE OR FLANGE HUB OD AND LUG.
- EACH TIE ROD REQUIRES 2 LUGS, ONE LOCATED ON THE OUTSIDE OF EACH FLANGED CONNECTION. HARNESS PLATE IS 1" THICK. MATERIAL: STEEL A36, STAINLESS A240 TYPE 304 OR 316
- TIE ROD SIZE IS Ø3/4". TIE ROD MATERIAL = ASTM A193 B7, (ALLOY STEEL), B8 (304 SS), OR B8M (316 SS)
- COATING: BARE, SHOPCOAT PAINT, OR NSF 61 FUSION BONDED EPOXY, BLACK
- 4 NUTS REQUIRED PER TIE ROD, (DOUBLE NUT CONFIGURATION.) MEETS SPECIFICATION "P110"
- SPECIFY TIE ROD LENGTH WHEN ORDERING.
- FLANGE BOLT SHALL BE GRADE 8 OR BETTER.

"ØF" BOLT CIRCLE MATCHES AWWA C207 CLS D & E, ANSI B16.1 CLS 125, ANSI B16.5 CLS 150

FLANGE OD "FOR REFERENCE"



<p>PROPRIETARY NOTICE</p> <p>THIS DRAWING CONTAINS CONFIDENTIAL PROPRIETARY INFORMATION AND IS THE PROPERTY OF ROMAC IND., INC. IT IS TO BE USED ONLY FOR THE PURPOSE FOR WHICH IT WAS SUBMITTED AND SHALL NOT HAVE ITS INFORMATION DISCLOSED OR REPRODUCED IN WHOLE OR IN PART FOR ANY PURPOSE WITHOUT PRIOR WRITTEN PERMISSION OF ROMAC IND., INC.</p>		<p>UNLESS OTHERWISE SPECIFIED</p> <p>DIMENSIONS ARE IN INCHES</p> <p>TOLERANCES ARE ON:</p> <p>1 PL DECIMALS ± 0.060</p> <p>2 PL DECIMALS ± 0.030</p> <p>3 PL DECIMALS ± 0.010</p> <p>ANGLES ± 1°</p> <p>FRACTIONS ± 1/64</p>		<p>SIGNATURES</p> <p>DATE</p>		<p>ROMAC INDUSTRIES INC.</p> <p>TITLE</p> <p>HARNESS LUG - 4" - 24", ANSI CLS 125/150 - 0.75 INCH TIE ROD - STYLE 492</p>					
		<p>DRAWN</p> <p>Peter Nielsen</p> <p>03/24/2014</p>		<p>APPROVED</p> <p>Niels Thogersen</p> <p>10/4/2016</p>		<p>DWG. NO.</p> <p>CAD-011062</p>		<p>SIZE</p> <p>A</p>	<p>REV. NO.</p> <p>R2</p>	<p>SCALE</p> <p>1:2.5</p>	<p>SHEET</p> <p>1 OF 1</p>

MODEL NAME: HARNESS LUG - 3 THRU 24 - 0.75 INCH TIE ROD - STYLE 492

MODEL CAD #: CAD-010737

LEGACY DRAWING #: B2615-A

AUTHOR: Peter Nielsen

CONFIGURATION NAME:18"

DRAWING FILE NAME: HARNESS LUG - 4 THRU 24 - 0.75 INCH TIE ROD - STYLE 492 - CUSTOMER DRAWING