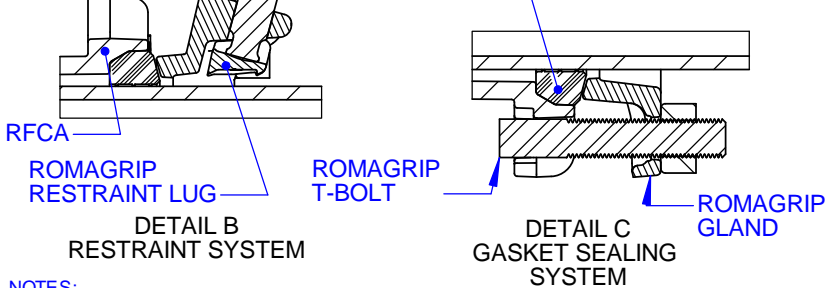
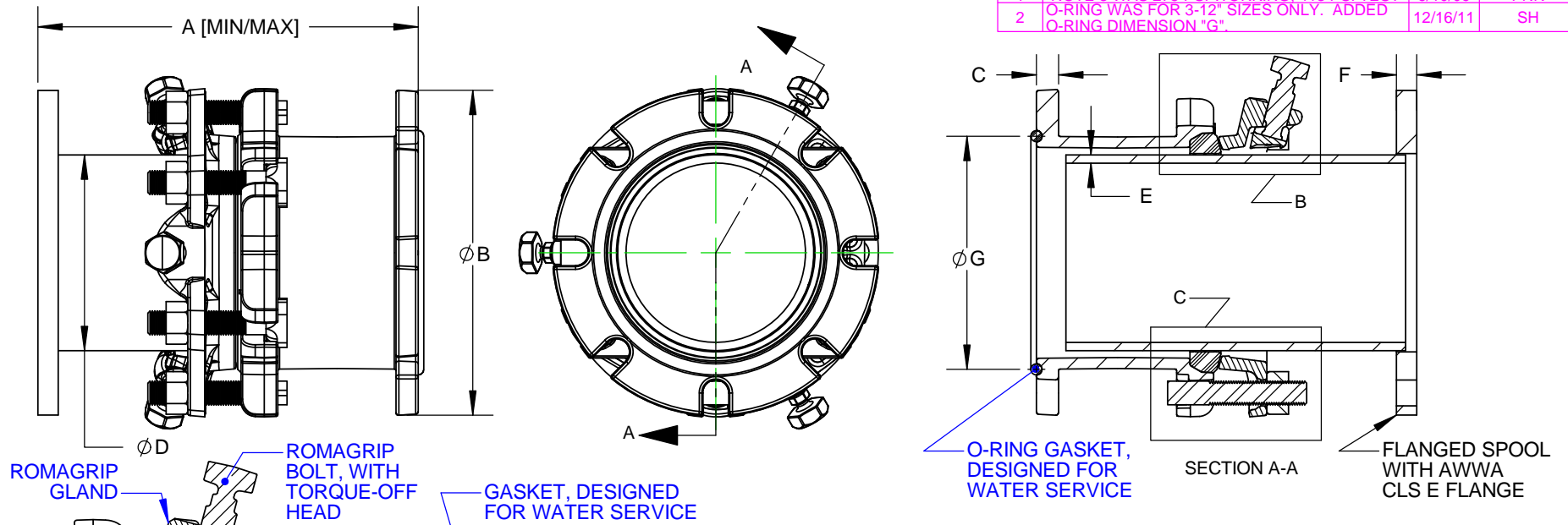
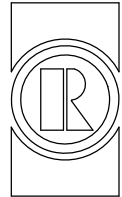


REVISIONS				
REV.	DESCRIPTION	DATE	APPROVED	
0	INITIAL RELEASE	10/31/03	NST III	
1	NOTE 3 WAS 275 PSI WORKING, 413 PSI TEST	6/10/09	PNN	
2	O-RING WAS FOR 3-12" SIZES ONLY. ADDED O-RING DIMENSION "G".	12/16/11	SH	



NOM SIZE	DIMENSIONS						MAX DEF. (DEG)	T-BOLTS			FLANGED SPOOL			RFCA	WGT (LBS)
	LENGTH "A"			FLG OD "B"	FCA FLG THK "C"	QTY		SIZE	LENGTH	OD "D"	PIPE THK "E"	FLG THK "F"	GSKT DIA "G"		
	NOM	MIN	MAX												
3	12.00	10.50	13.50	7.5	0.75	2.0	4	5/8"	3.75	3.50	0.22	0.94	4.66	36	
4	13.25	11.50	15.00	9.0	0.75	3.5	4	3/4"	4.25	4.50	0.24	1.13	6.00	52	
6	14.25	12.25	16.25	11.0	0.75	3.5	6	3/4"	4.25	6.63	0.28	1.31	7.90	78	
8	14.50	12.50	16.50	13.5	0.75	3.3	6	3/4"	4.25	8.63	0.32	1.50	10.00	112	
10	15.75	13.50	18.00	16.0	0.75	3.0	8	3/4"	4.25	10.75	0.37	1.56	12.40	167	
12	15.75	13.50	18.00	19.0	0.81	3.0	8	3/4"	4.25	12.75	0.38	1.75	15.12	231	
14	20.25	17.75	22.75	21.0	1.38	2.0	10	3/4"	4.50	15.30	0.38	1.88	16.38	344	
16	20.25	17.75	22.75	23.5	1.44	2.0	12	3/4"	4.50	17.40	0.38	2.00	18.48	412	
18	21.50	19.00	24.00	25.0	1.45	1.5	12	3/4"	4.50	19.50	0.38	2.13	20.57	454	
20	21.50	19.00	24.00	27.5	1.47	1.5	14	3/4"	4.50	21.60	0.38	2.38	22.63	546	
24	22.75	20.25	25.25	32.0	1.50	1.5	16	3/4"	5.00	25.80	0.38	2.63	26.88	692	

- NOTES:
- NSF 61 CERTIFIED COATING: FUSION BONDED EPOXY IS STANDARD. OTHER COATINGS AVAILABLE UPON REQUEST.
  - CUSTOMER MUST CONFIRM LENGTH OF ASSEMBLY TOLERANCE "A".
  - PRESSURE RATED UP TO FLANGES PROVIDED. 3"-16" AWWA CLS E 275 PSIG WORKING, 413 PSIG TEST. 18"-24" AWWA CLS E 250 PSI WORKING, 375 PSIG TEST.
  - ROMAC DJ405 DISMANTLING JOINT WILL ALLOW DEFLECTION. SEE TABLE FOR VALUES.
  - T-BOLTS PER AWWA C111. STAINLESS STEEL FASTENERS AVAILABLE UPON REQUEST.

PROPRIETARY NOTICE	UNLESS OTHERWISE SPECIFIED	SIGNATURES	ROMAC INDUSTRIES INC., BOTHELL, WA			
THIS DRAWING CONTAINS CONFIDENTIAL PROPRIETARY INFORMATION AND IS THE PROPERTY OF ROMAC IND., INC. IT IS TO BE USED ONLY FOR THE PURPOSE FOR WHICH IS WAS SUBMITTED AND SHALL NOT HAVE IT'S INFORMATION DISCLOSED OR REPRODUCED IN WHOLE OR IN PART FOR ANY PURPOSE WITHOUT PRIOR WRITTEN PERMISSION OF ROMAC IND., INC.	DIMENSIONS ARE IN INCHES  TOLERANCES ARE ON: 1 PL DECIMALS ± .060 2 PL DECIMALS ± .030 3 PL DECIMALS ± .010 ANGLES ± 1° FRACTIONS ± 1/64	DRAWN	 TITLE <b>DISMANTLING JOINT DJ405 3" - 24" CLS E</b>			
		CHECKED				
		APPROVAL ORGANIZATIONS ENGINEERING	DWG. NO. <b>B2305-A</b>	SIZE <b>A</b>	REV. NO. <b>2</b>	SCALE <b>NTS</b>