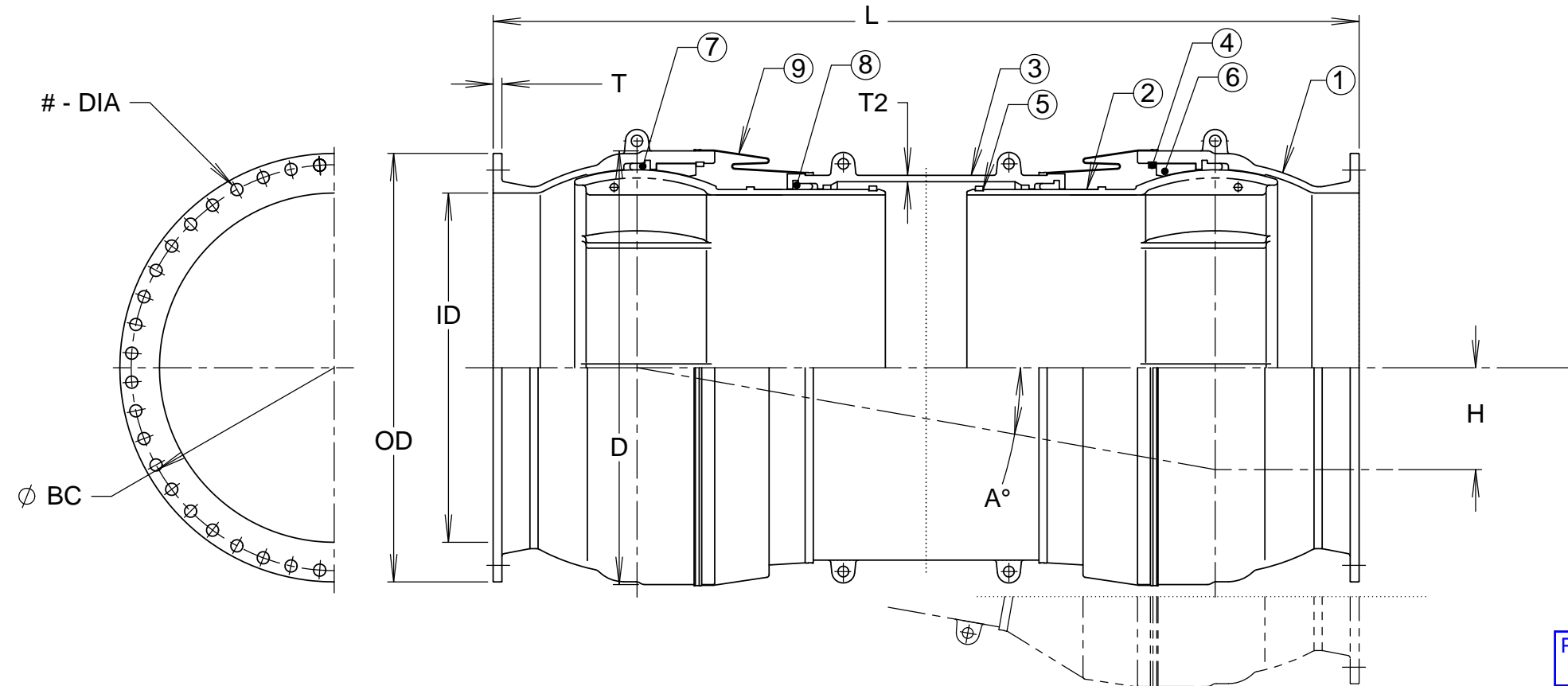


REVISIONS

REV.	DESCRIPTION	DATE	APPROVED
0	INITIAL RELEASE	10/23/2003	DHE
1	ADDED 19.7" OFFSET SIZE	10/24/2007	DHE
2	19.7 OFFSET SIZE WAS +7.9/-5.9	10/29/2007	DHE
3	NAME WAS FLEXIJOINT, UPDATED FORMAT	1/23/2012	NST
4	CASING MTL WAS SBR. DIM H WAS 15.8, DIM T WAS 1.37, WEIGHT WAS 12100	12/30/2021	JJM
5	BALLOON 5 WAS MISSING	10/25/2022	JJM



PART NO.	QTY.	NAME	MATERIAL
1	2	CASING	DUCTILE IRON
2	2	BALL SLEEVE	DUCTILE IRON
3	1	SLEEVE	DUCTILE IRON
4	2	LOCKRING	DUCTILE IRON
5	2	LOCKRING	DUCTILE IRON
6	2	CASING PIECE	DUCTILE IRON
7	2	RUBBER RING	SBR
8	2	RUBBER RING	SBR
9	2	CASING COVER	CR

DIMENSIONS

SIZE	D	H (OFFSET)	L	ANGLE A	EXPANSION/CONTRACTION	OD	BC	ID	T	T2	FLANGE BOLT HOLES		WGT., LBS.
											#	DIA	
48"	60.6	11.8	108.3	±10.0°	+7.9/ -5.9	59.5	56.0	48.0	1.38	0.9	44	1.63	11500
		15.7	129.9		+13.8/ -9.8								12200
		19.7	152.4		+13.8/ -9.8								13300

- NOTE:
- FUSION BONDED EPOXY APPLIED TO ALL DUCTILE IRON COMPONENTS.
 - FLANGE COMPATIBLE WITH CLASS 150 DRILLING.

<p>PROPRIETARY NOTICE</p> <p>THIS DRAWING CONTAINS CONFIDENTIAL PROPRIETARY INFORMATION AND IS THE PROPERTY OF ROMAC IND., INC. IT IS TO BE USED ONLY FOR THE PURPOSE FOR WHICH IS WAS SUBMITTED AND SHALL NOT HAVE ITS INFORMATION DISCLOSED OR REPRODUCED IN WHOLE OR IN PART FOR ANY PURPOSE WITHOUT PRIOR WRITTEN PERMISSION OF ROMAC IND., INC.</p>	<p>UNLESS OTHERWISE SPECIFIED</p> <p>DIMENSIONS ARE IN INCHES</p> <p>TOLERANCES ARE ON:</p> <p>1 PL DECIMALS ±</p> <p>2 PL DECIMALS ±</p> <p>3 PL DECIMALS ±</p> <p>ANGLES ±</p> <p>FRACTIONS ±</p>	<p>SIGNATURES</p> <p>DRAWN</p> <p>JOSHUA MORMAN 10/24/22</p> <p>CHECKED</p> <p><i>[Signature]</i> 10/26/2022</p> <p>APPROVAL ORGANIZATIONS</p> <p>PROP.CUST.APP. ORG.</p>		<p>ROMAC INDUSTRIES INC., BOTHELL, WA</p> <p>TITLE</p> <p>FJ-RESTRAINT 48", DOUBLE BALL, FLANGED</p>	
<p>DWG. NO. B2295-B</p>		<p>SIZE B</p>	<p>REV. NO. 5</p>	<p>SCALE NTS</p>	<p>SHEET 1 OF 1</p>