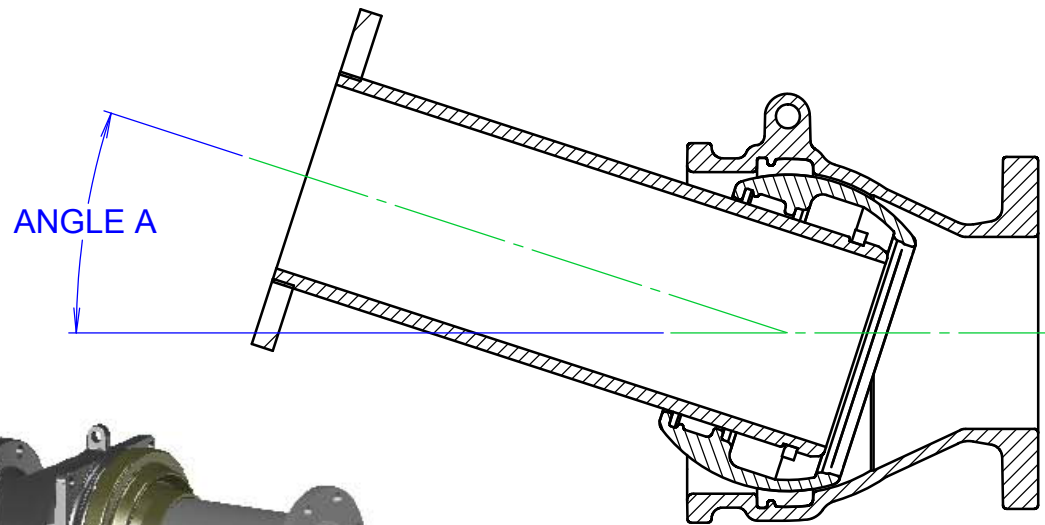
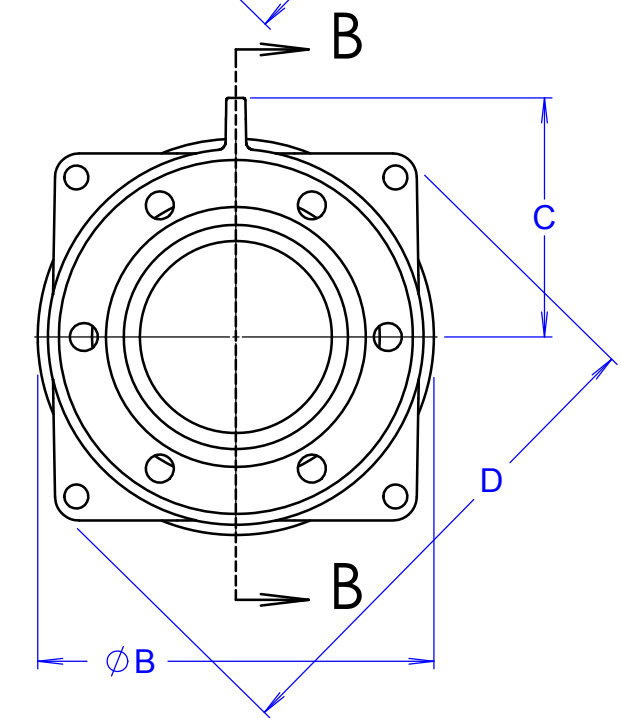
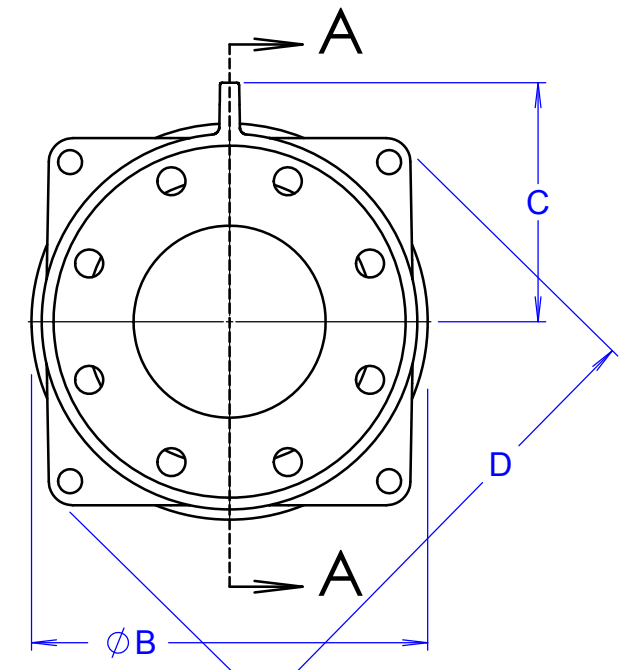
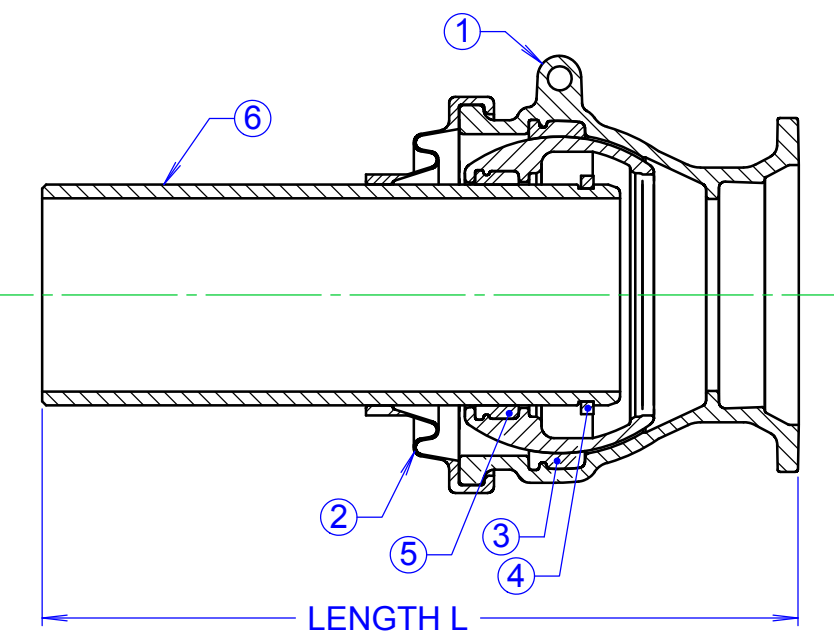
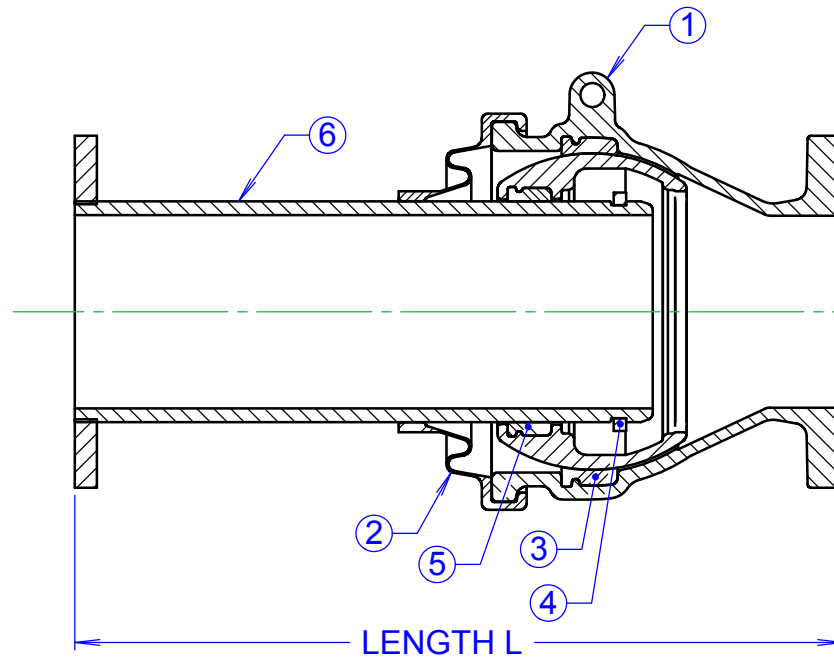



| PART NO. | QTY. | NAME | DESCRIPTION |
|----------|------|---------------|---|
| 1 | 1 | CASING | AVAILABLE FLANGED OR MJ END. ASTM A536 DUCTILE IRON. FLANGE DRILL PER CLS 150. MJ END PER C110. |
| 2 | 1 | CASING COVER | ETHYLENE PROPYLENE DIENE METHYLENE (EPDM) RUBBER |
| 3 | 1 | CASING GASKET | ETHYLENE PROPYLENE DIENE METHYLENE (EPDM) RUBBER |
| 4 | 1 | LOCKRING | TYPE 400 SERIES STAINLESS STEEL |
| 5 | 1 | BALL GASKET | ETHYLENE PROPYLENE DIENE METHYLENE (EPDM) RUBBER |
| 6 | 1 | SLEEVE | AVAILABLE FLANGED OR PLAIN END. ASTM A536 DUCTILE IRON. FLANGE DRILLING PER CLS 150. |

| REVISIONS | | | |
|-----------|-----------------------------------|-----------|-------------|
| REV. | DESCRIPTION | DATE | APPROVED |
| 0 | INITIAL RELEASE | 9/23/2003 | |
| 1 | LENGTH "E" WAS "L" | 7/18/2005 | DH EATON |
| 2 | WAS "FLEXJOINT, UPDATED TEMPLATE" | 6/20/2011 | N THOGERSEN |

| DIMENSIONS | | | | | | | |
|------------|-------|------|------|------|-----------|-------------|----------------|
| SIZE | A | B | C | D | EXPANSION | MAX. PRESS. | L (SEE NOTE 1) |
| 14 | 15.0° | 21.7 | 12.7 | 26.2 | 3.94 | 350 psi | 24 36 |
| 16 | 15.0° | 24.1 | 14.0 | 28.6 | 4.72 | 350 psi | 24 36 |
| 18 | 15.0° | 26.3 | 15.1 | 30.9 | 4.72 | 350 psi | 24 36 |
| 20 | 15.0° | 29.2 | 16.9 | 34.3 | 5.91 | 350 psi | - 36 |
| 24 | 15.0° | 34.7 | 19.7 | 39.4 | 5.91 | 350 psi | - 36 |



- NOTE:
1. CAN BE SUPPLIED WITH EITHER LENGTH.
 2. COATING: LINED AND COATED WITH FUSION BONDED EPOXY, APPLIED AND TESTED IN ACCORDANCE WITH AWWA C213. 1
 3. LENGTH "L" VARIES: CASING COVER SLIDES ON SLEEVE.

| | | | | | |
|--|--|--|---|-------------------------|----------------------------|
| <p>PROPRIETARY NOTICE</p> <p>THIS DRAWING CONTAINS CONFIDENTIAL PROPRIETARY INFORMATION AND IS THE PROPERTY OF ROMAC IND., INC. IT IS TO BE USED ONLY FOR THE PURPOSE FOR WHICH IS WAS SUBMITTED AND SHALL NOT HAVE ITS INFORMATION DISCLOSED OR REPRODUCED IN WHOLE OR IN PART FOR ANY PURPOSE WITHOUT PRIOR WRITTEN PERMISSION OF ROMAC IND., INC.</p> | <p>UNLESS OTHERWISE SPECIFIED</p> <p>DIMENSIONS ARE IN INCHES</p> <p>TOLERANCES ARE ON: 1 PL DECIMALS ± .060 2 PL DECIMALS ± .030 3 PL DECIMALS ± .010 ANGLES ± 1° FRACTIONS ± 1/64</p> | <p>SIGNATURES</p> <p>DRAWN</p> <p>CHECKED</p> <p>APPROVAL ORGANIZATIONS</p> <p>ENGINEERING</p> |  <p>ROMAC INDUSTRIES INC., BOTHELL, WA</p> <p>TITLE</p> <p>FJ-RESTRAINT SINGLE BALL, 14" - 24"</p> | | |
| <p>DWG. NO. B2277-B</p> | | <p>SIZE B</p> | <p>REV. NO. 2</p> | <p>SCALE 1:6</p> | <p>SHEET 1 OF 1</p> |