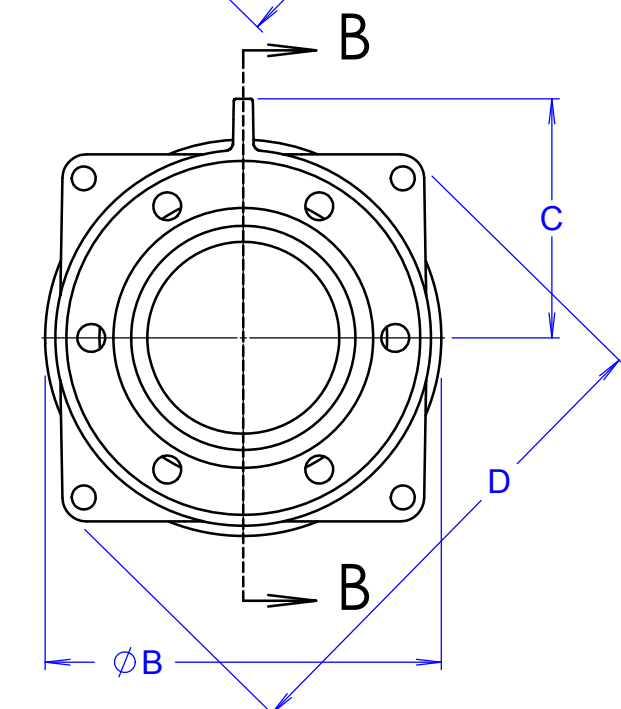
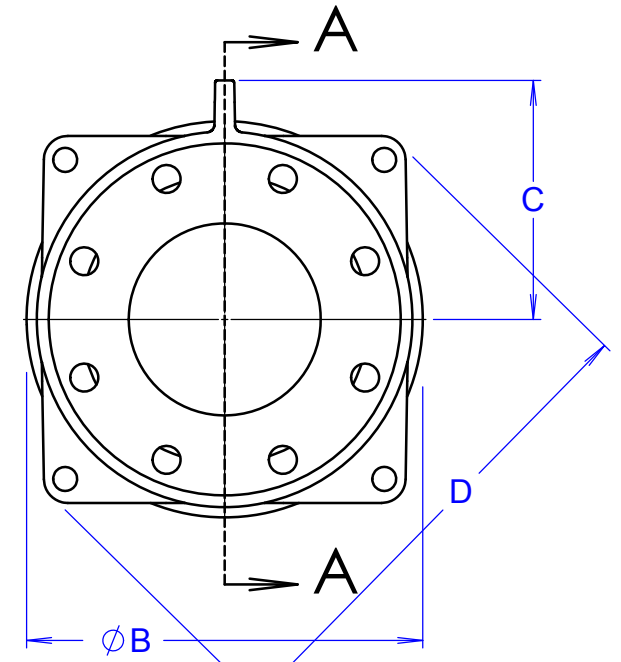
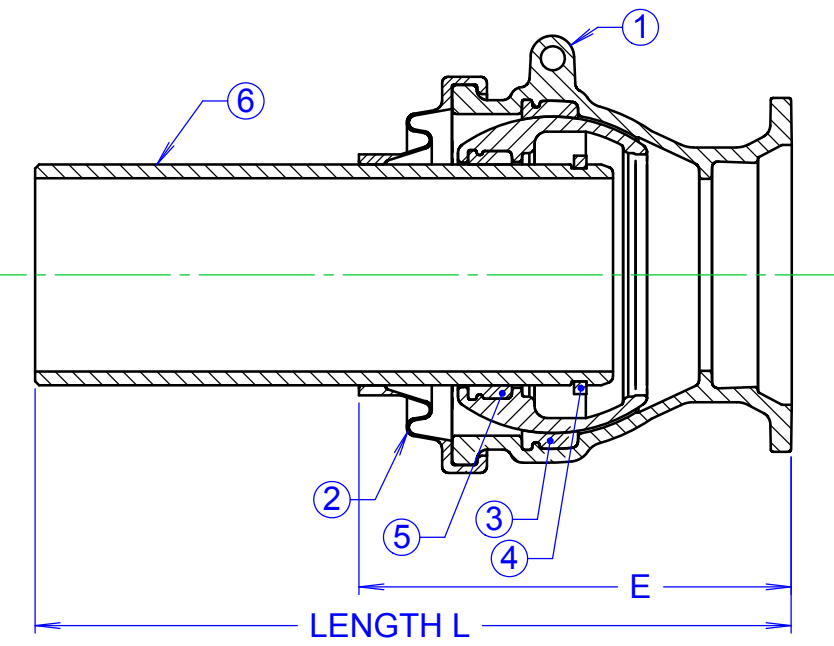
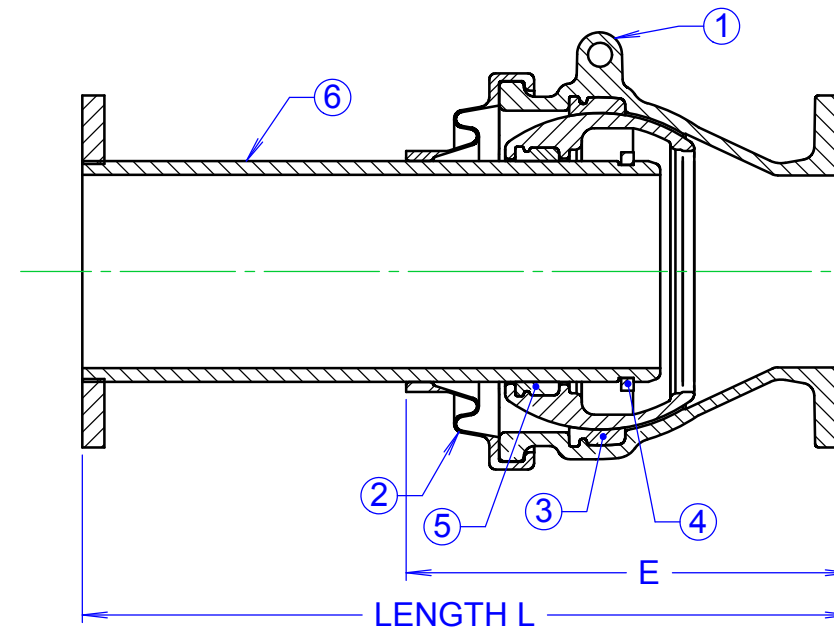
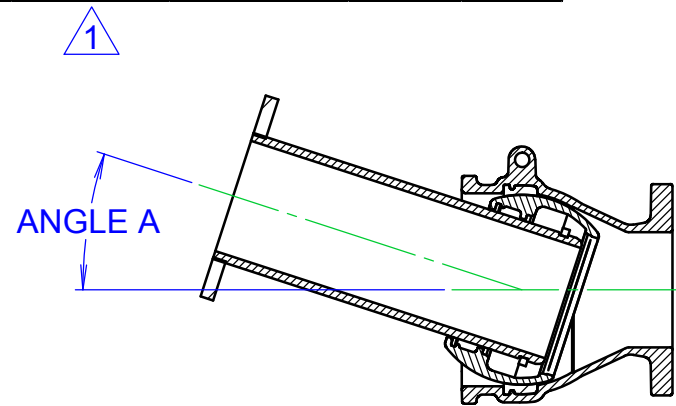


PART NO.	QTY.	NAME	DESCRIPTION
1	1	CASING	AVAILABLE FLANGED OR MJ END. ASTM A536 DUCTILE IRON. FLANGE DRILL PER CLS 150. MJ END PER C110.
2	1	CASING COVER	ETHYLENE PROPYLENE DIENE METHYLENE (EPDM) RUBBER
3	1	CASING GASKET	ETHYLENE PROPYLENE DIENE METHYLENE (EPDM) RUBBER
4	1	LOCKRING	TYPE 400 SERIES STAINLESS STEEL
5	1	BALL GASKET	ETHYLENE PROPYLENE DIENE METHYLENE (EPDM) RUBBER
6	1	SLEEVE	AVAILABLE FLANGED OR PLAIN END. ASTM A536 DUCTILE IRON. FLANGE DRILLING PER CLS 150.

REVISIONS			
REV.	DESCRIPTION	DATE	APPROVED
0	INITIAL RELEASE	12/11/2002	DH EATON
1	ADDED EXPANSION	12/12/2002	DH EATON
2	ADDED NOTE 4 AND THRUST TABLE	12/28/2004	DHEATON
3	NAME WAS "FLEXIJOINT", UPDATED TEMPLATE	6/20/2011	N THOGERSEN

DIMENSIONS									
SIZE	A	B	C	D	E*	EXPANSION	MAX. PRESS.	L (SEE NOTE 1)	
3	20.0°	8.3	5.7	11.9	12.0	2.00	350	24	36
4	19.0°	9.4	6.3	13.2	13.5	2.00	350	24	36
6	18.0°	11.9	7.4	15.6	13.0	3.13	350	24	36
8	17.0°	14.4	8.7	18.1	16.0	3.13	300	24	36
10	16.0°	16.9	10.1	20.7	17.5	3.13	300	24	36
12	15.0°	19.4	11.3	23.7	19.0	3.94	250	24	36

*SEE NOTE 3



- NOTE:
- CAN BE SUPPLIED WITH EITHER LENGTH.
 - COATING: LINED AND COATED WITH FUSION BONDED EPOXY, APPLIED AND TESTED IN ACCORDANCE WITH AWWA C213.
 - LENGTH "E" VARIES: CASING COVER SLIDES ON SLEEVE.
 - END THRUST MUST BE ACCOMMODATED IN DESIGN OF PIPING SYSTEMS. THE THRUST AT THE FLEXIJOINT WILL BE IN PROPORTION TO THE PRESSURE APPLIED IN THE SYSTEM. SEE THE TABLE BELOW FOR AREA AND TYPICAL THRUST LOADS.

SIZE	CROSS-SECT. DIA.	AREA (in ²)	THRUST (lbs.)				
			50 psi	100 psi	150 psi	200 psi	250 psi
3"	Ø3.96	12.32	616	1,232	1,847	2,463	3,079
4"	Ø4.80	18.10	905	1,810	2,714	3,619	4,524
6"	Ø6.90	37.39	1,870	3,739	5,609	7,479	9,348
8"	Ø9.05	64.33	3,216	6,433	9,649	12,865	16,082
10"	Ø11.10	96.77	4,838	9,677	14,515	19,354	24,192
12"	Ø13.20	136.85	6,842	13,685	20,527	27,370	34,212

<p>PROPRIETARY NOTICE</p> <p>THIS DRAWING CONTAINS CONFIDENTIAL PROPRIETARY INFORMATION AND IS THE PROPERTY OF ROMAC IND., INC. IT IS TO BE USED ONLY FOR THE PURPOSE FOR WHICH IT WAS SUBMITTED AND SHALL NOT HAVE ITS INFORMATION DISCLOSED OR REPRODUCED IN WHOLE OR IN PART FOR ANY PURPOSE WITHOUT PRIOR WRITTEN PERMISSION OF ROMAC IND., INC.</p>	<p>UNLESS OTHERWISE SPECIFIED</p> <p>DIMENSIONS ARE IN INCHES</p> <p>TOLERANCES ARE ON: 1 PL DECIMALS ± 0.060 2 PL DECIMALS ± 0.030 3 PL DECIMALS ± 0.010 ANGLES ± 1° FRACTIONS ± 1/64</p>	<p>SIGNATURES</p> <p>DRAWN</p> <p>CHECKED</p> <p>APPROVAL ORGANIZATIONS</p> <p>ENGINEERING</p>	<p>ROMAC INDUSTRIES INC., BOTHELL, WA</p> <p>TITLE</p> <p>FJ-RESTRAINT, SINGLE BALL, 3" - 12"</p>	<p>DWG. NO.</p> <p>B2120-B</p>	<p>SIZE</p> <p>B</p>	<p>REV. NO.</p> <p>3</p>	<p>SCALE</p> <p>1:6</p>	<p>SHEET</p> <p>1 OF 2</p>
--	---	--	--	--------------------------------	----------------------	--------------------------	-------------------------	----------------------------