

SST-X

ROMAC LINE STOPPING SLEEVE



 **ROMAC**
INDUSTRIES, INC.

1.800.426.9341 • www.romac.com

BSST-X • 11/22/2024

1980



SST - THE ORIGINAL ALL STAINLESS STEEL TAPPING SLEEVE

In 1980 Romac introduced the SST, the industry's first all stainless steel tapping sleeve.

1980 SST brochure.



2012



Now Romac offers the same high quality and robust design in a line stopping sleeve.

SST-X STAINLESS STEEL LINE STOPPING SLEEVE

- Fits most line stopping equipment.
- Built in range means that one sleeve fits various pipe classes.
- All stainless steel construction.
- Manufactured in the U.S.A.



REINFORCES THE PIPE

- Full circle design reduces stress on the pipe opposite line stop equipment.



ROMAC GASKET

- Hydrodynamic sealing gasket.

NSF61/372 Certified upon request.

SST-X

STAINLESS STEEL TAPPING SLEEVES

MATERIAL SPECIFICATIONS

NUTS

Heavy hex, 304 stainless steel, coated to prevent galling.

PLASTIC WASHERS

Prevent galling.

WASHERS

Stainless steel flat washers.

BLIND FLANGE

ASTM A36 or equivalent. Epoxy coated.

COMPLETION PLUG

Ductile iron per ASTM A536.

PLUG O-RING

Styrene butadiene rubber (SBR) compounded for water and sewer service in accordance with ASTM D2000.

FLANGE

304 Stainless steel flange per AWWA C228-08. ANSI class 150 drillings and raised face to accept blind flange. GMAW welded to neck.

FLANGE BOLTS

Hex head, Type 304 stainless steel per ASTM A193.

SLEEVE SHELL AND SIDE BARS

304 stainless steel.

BOLTS

304 stainless steel. Four inch sleeves use 1/2" UNC threads. Six inch and larger use 5/8" UNC threads.

ARMORS

304 stainless steel.

SLEEVE GASKET

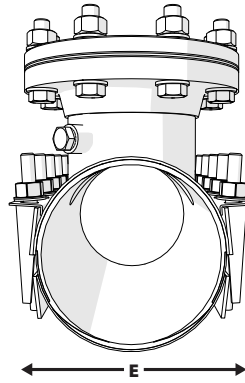
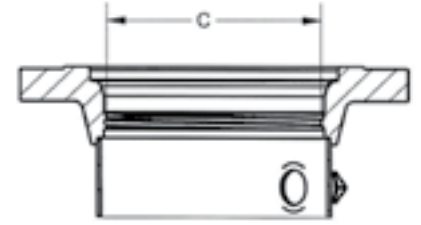
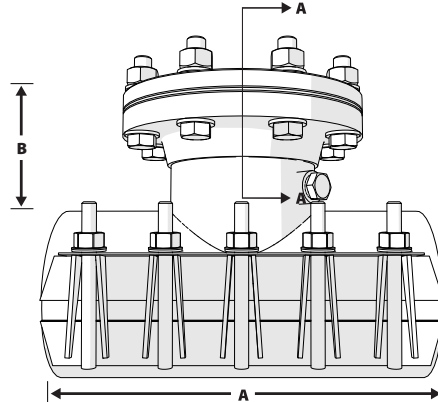
Virgin SBR rubber compounded for water and sewer service in accordance with ASTM D2000 MAA 610. Specially designed grid pattern and tapered ends to assure a seal around full circumference of pipe. Other compounds available for high temperature service and other special applications.



SST-X

STAINLESS STEEL TAPPING SLEEVES

DIMENSIONS



SST-X PRESSURE RATINGS		
NOM. SLEEVE SIZE	WORKING PRESSURE	TEST PRESSURE
4" - 8"	250 PSI	312 PSI
10" - 12"	200 PSI	300 PSI

NOMINAL PIPE SIZE	SLEEVE O.D. RANGE (inches)	CATALOG NUMBER	NO. OF BOLTS	DIMENSIONS			
				A LAY LENGTH	B NECK HEIGHT	C NECK ID	E SLEEVE WIDTH
4"	4.50 - 4.80	SST-X - 4.80	8	12"	4.00"	4.00"	PIPE OD + 3.00"
	4.70 - 5.00	SST-X - 5.00					
	5.00 - 5.30	SST-X - 5.30					
6"	6.60 - 7.00	SST-X - 7.00	10	16"	4.50"	6.00"	PIPE OD + 3.00"
	7.10 - 7.50	SST-X - 7.50					
	7.50 - 7.90	SST-X - 7.90					
8"	8.30 - 8.63	SST-X - 8.63	14	20"	5.00"	8.00"	PIPE OD + 3.00"
	8.62 - 9.06	SST-X - 9.06					
	9.04 - 9.45	SST-X - 9.45					
	9.20 - 9.60	SST-X - 9.60					
10"	10.73 - 11.13	SST-X - 11.13	16	24"	5.50"	10.00"	PIPE OD + 3.00"
	11.06 - 11.45	SST-X - 11.45					
	11.45 - 11.85	SST-X - 11.85					
	11.79 - 12.19	SST-X - 12.19					
12"	12.45 - 12.85	SST-X - 12.85	20	30"	5.75"	12.00"	PIPE OD + 3.00"
	13.16 - 13.56	SST-X - 13.56					
	13.98 - 14.38	SST-X - 14.38					

