



Transmate

Waterworks tools by Romac

Tapping Machines • Direct Corporation Stop Insertion • Valve Insertion
Pipe Drilling Machines • Dechlorinator • Sewer Pipe Tapping
Power / Drive Units • Tools and Accessories

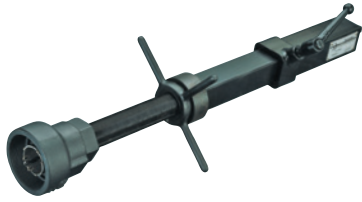
Made in the U.S.A.



1.800.426.9341 • www.romac.com

BTRANS1 • 06.2016

TapMate Drilling Machines



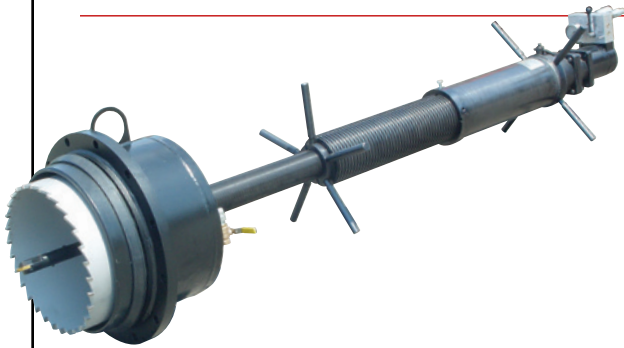
TapMate™ Too

- $\frac{3}{4}$ " - 2" taps.
- Weighs just 10 lbs.
- 150 psi pressure rating.
- More than 12 inches of boring bar travel.
- Simple construction allows in-house maintenance and repair.
- For use on PVC, A/C, Ductile Iron, Cast Iron, Steel and HDPE pipe.



TapMate™

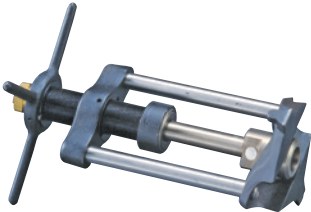
- 3" - 12" taps.
- Weighs just 65 lbs.
- 150 psi pressure rating.
- More than 27 inches of boring bar travel.
- Simple construction allows in-house maintenance and repair.
- For use on PVC, A/C, Ductile Iron, Cast Iron, Steel and HDPE pipe.



TapMate™ XL-424

- 4" - 24" taps.
- 300 psi pressure rating.
- Over 39 inches of travel.
- Simple construction allows in-house maintenance and repair.
- Can be used with existing TapMate and QuikValve equipment.
- For use on PVC, A/C, Ductile Iron, Cast Iron, Steel and HDPE pipe.

Direct Corporation Stop Insertion



TapMate™ Dry Tap

- $\frac{3}{4}$ " - 1" dry taps.
- Drilling shaft is supported at two points.
- Conforms to pipe sizes 3" - 48".
- For use on PVC, Ductile Iron and Cast Iron pipe.



B-1™

- Inserts any $\frac{3}{4}$ " - 1" corporation stop under pressure.
- Fast - no disassembly and assembly during installation.
- Simple and easy to operate manually or under power.
- For use on PVC, Ductile Iron and Cast Iron pipe.



B-Too™

- Inserts any $\frac{3}{4}$ " - 1" corporation stop under pressure, up to 250 psi.
- Provides greater stability when cutting with the drill-tap and easier alignment when inserting the corporation stop.
- Uses common saddles, drill-taps and screw plugs.
- For use on PVC, Ductile Iron and Cast Iron pipe.

Valve Insertion



QuikValve™

- Inserts a valve in an operating line without loss of pressure.
- 4" - 8" installations.
- Can be used in water lines with up to 150 psi ambient pressure.
- For use on Ductile Iron, Cast Iron, A/C and some classes of PVC pipe.



InsertaValve™

- Inserts a valve in an operating line without loss of pressure.
- 10" - 12" installations.
- Can be used in water lines with up to 150 psi ambient pressure.
- Completion time is less than two hours.
- For use on Ductile Iron, Cast Iron, A/C and some classes of PVC pipe.

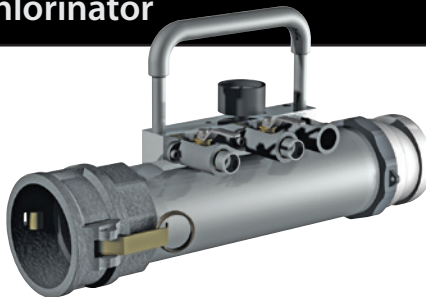
Valve Exerciser



Exerciser™

- Valve exerciser for municipal use.
- Weighs just 40 lbs.
- Easily handled by one person.
- Up to 250 ft-lbs. of torque.
- Motorcycle grip forward and reverse control handle.

DeChlorinator™

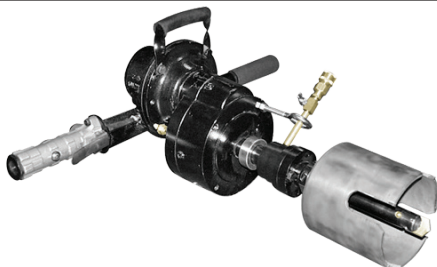


DeChlorinator™

- Allows water utilities to meet regulations for residual chlorine concentration in released water.
- Enables contractors to quickly flush highly concentrated chlorinated water in new construction situations.

• Helps meet EPA, CWA, and SDWA legislation for released water entering receiving streams.

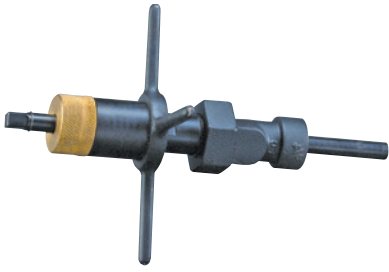
Sewer Tapping



Sewer Pipe Tapping Machine

- 3 1/2" - 8 3/4" taps.
- Powered by an air motor.
- Weighs just 39 lbs.
- For use on PVC, Vitrified Clay, Concrete and HDPE pipe.

Pipe Drilling Machines



M-1™

- $\frac{3}{4}$ " - 1" range of cuts.
- Weighs just 10 lbs.
- Good for wet and dry cuts.
- Uses TapMate Too adapters, arbor and ratchet.
- For use on PVC, A/C, Ductile Iron, Cast Iron, Steel and HDPE pipe.



5930™

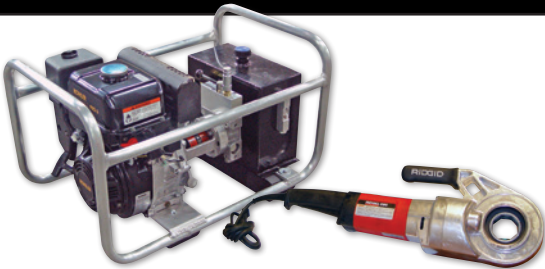
- $\frac{3}{4}$ " - 1" range of cuts.
- Good for wet and dry cuts.
- Easy to set-up and use.
- For use on PVC, A/C, Ductile Iron, Cast Iron, Steel and HDPE pipe.



5935™

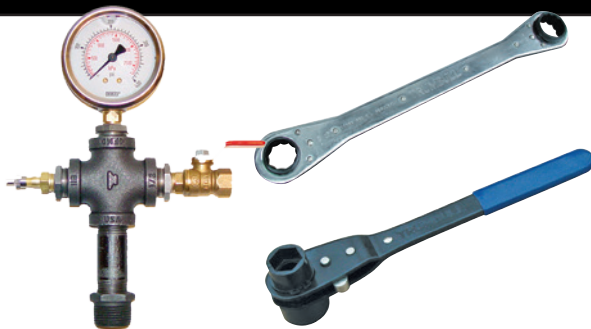
- $\frac{3}{4}$ " - 2" range of cuts.
- Weighs approximately 40 lbs.
- Easy to set-up and use.
- For use on PVC, A/C, Ductile Iron, Cast Iron and Steel pipe.

Power / Drive Units



Transmate offers hydraulic, electric, and pneumatic drives to power your tapping and drilling machines. You can purchase machines and drive units separately, or together as a package.

Tools & Accessories



Transmate offers other tools and accessories designed specifically for use on tapping sleeves, valves and other fittings. For more information on the full line of Transmate products, contact Romac Industries, 1.800.426.9341.