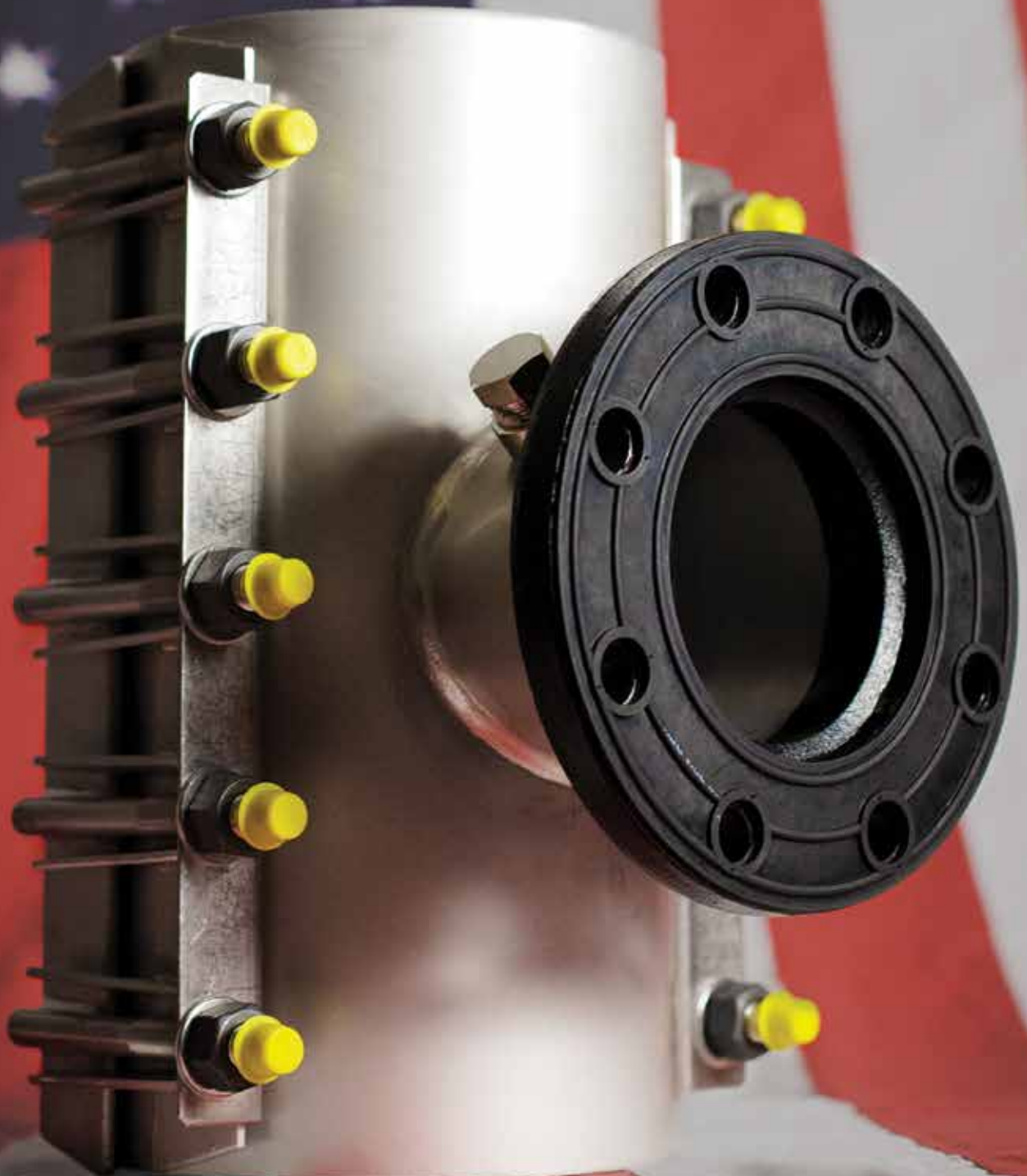


SSTTM

STAINLESS STEEL TAPPING SLEEVES

**REDUCES INVENTORY • INSTALLS EASILY
FULL CIRCLE SEAL • LIGHTWEIGHT • REINFORCES PIPE
MANUFACTURED IN THE U.S.A.**



SST™

STAINLESS STEEL TAPPING SLEEVES

REDUCES INVENTORY

Built-in range means one sleeve fits various classes of Ductile Iron, Cast Iron, PVC, HDPE and asbestos cement pipe.

INSTALLS EASILY

No caulking, welding, specially trained personnel or tools are needed. A torque wrench to tighten bolts is the only tool required to install the sleeve.

FULL CIRCUMFERENTIAL SEAL

Allows you to tap size-on-size with confidence, assuring you of a full circumferential seal. No more need for heavy, hard to assemble sleeves.



ROMAC GASKET

Special gasket with reinforced ring provides a hydrodynamic seal at the outlet.

ALL STAINLESS STEEL

With the exception of an optional ductile iron flange, the sleeve is made of stainless steel per ASTM A 240, type 304.

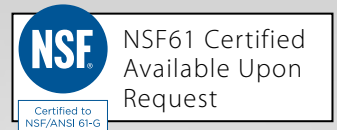
LIGHTWEIGHT

The high tensile strength of stainless steel allows us to manufacture extremely light tapping sleeves that are easy to handle.



REINFORCES PIPE

Full circle design reduces stress on the pipe opposite the tap.



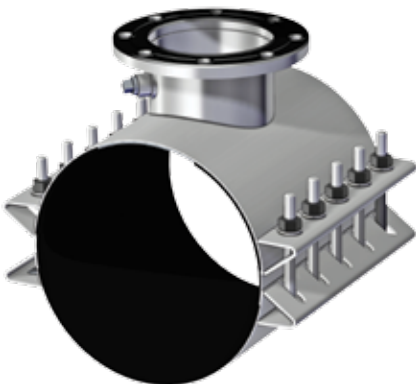
ROMAC SST & SSTIII SIDEBAR CONFIGURATIONS



SST

Standard Sizes: 4" - 24"
Other sizes available.

SST bolts and sidebars are attached to the shell. As a result there are fewer pieces to handle.



SSTIII

Standard Sizes: 4" - 30"
Other sizes available.

SSTIII triangular sidebars have removable replaceable bolts.

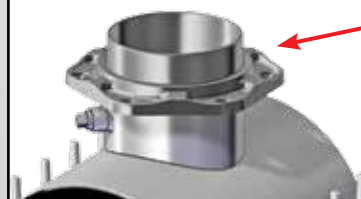
ROMAC SST & SSTIII OUTLET OPTIONS



STAINLESS STEEL
FLANGE OUTLET
GASKET INCLUDED



DUCTILE IRON
FLANGE OUTLET
GASKET INCLUDED

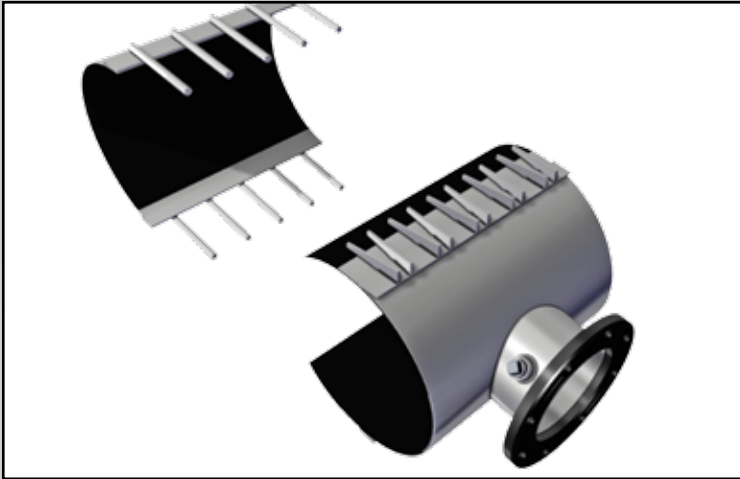


STAINLESS STEEL
MECHANICAL
JOINT OUTLET
T-BOLTS & GASKET
INCLUDED

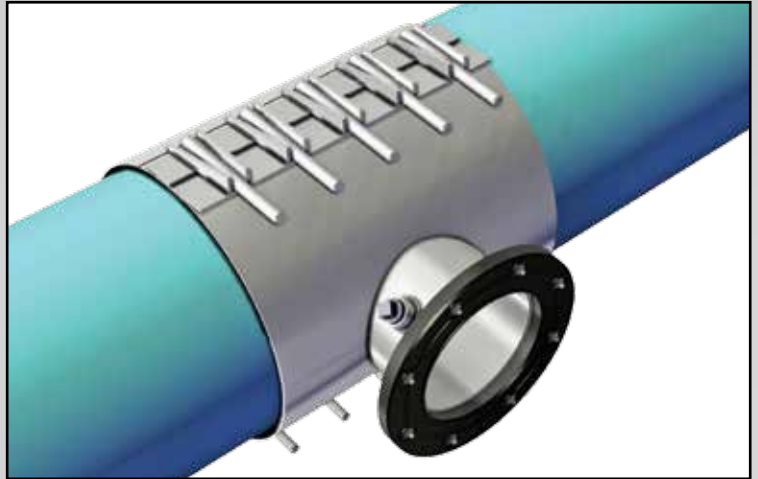


DUCTILE IRON
MECHANICAL
JOINT OUTLET
T-BOLTS & GASKET
INCLUDED

INSTALLATION



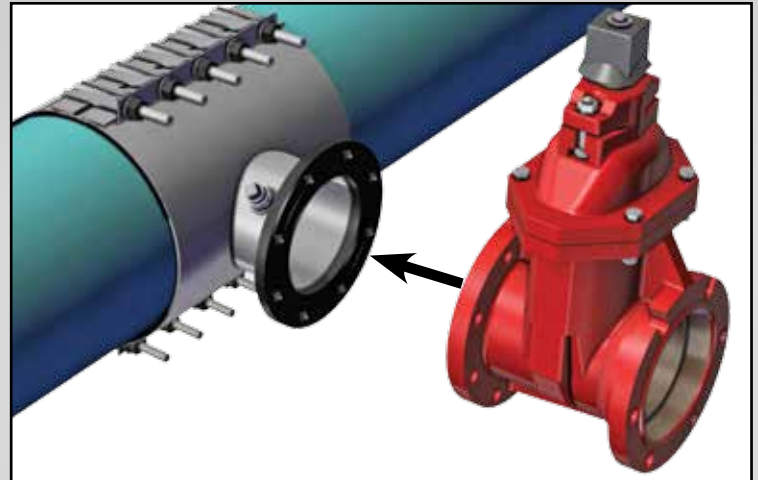
1. Remove nuts and separate the sleeve halves.



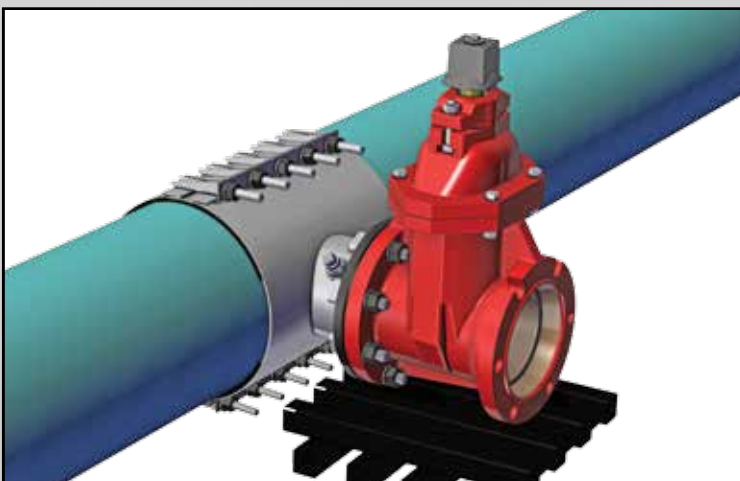
2. Clean / lubricate the pipe and reassemble the sleeve halves on the pipe.



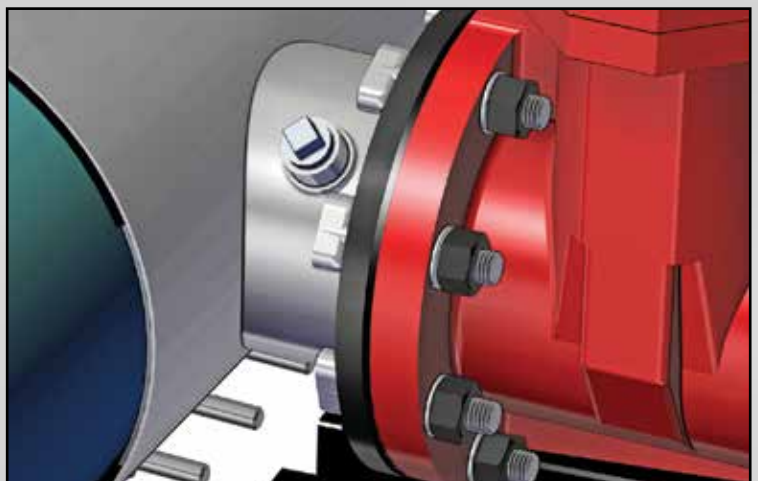
3. Tighten the nuts evenly to the recommended torque.



4. Attach tapping valve to the flange.



5. Block or otherwise support the valve.



6. Use the test port to pressure test.
Visit www.romac.com for complete details.

SST™

STAINLESS STEEL TAPPING SLEEVES



NSF NSF61 Certified
Available Upon
Request

Certified to
NSF/ANSI 61-G

MATERIAL SPECIFICATIONS

SHELL AND LUGS: Stainless steel per ASTM A240, type 304 and type 304L.

TEST PLUG: 3/4" NPT type 304 Stainless Steel. Plug threads coated to prevent galling.

BOLTS: 5/8" UNC rolled thread, stainless steel per ASTM A193, type 304. 4" nominal pipe size has 1/2" bolts.

NUTS: Heavy hex, stainless steel per ASTM A194, type 304, coated to prevent galling

WASHERS: Stainless steel per ASTM A240, type 304 and plastic lubricating washer.

GASKETS: SBR per ASTM D 2000 MAA 610, compounded for water and sewer service. Other compounds available on request.

MJ BOLTS & NUTS: 3/4" UNC T-Bolts, heavy hex nuts, high strength low alloy steel per AWWA C111.

OUTLET OPTIONS

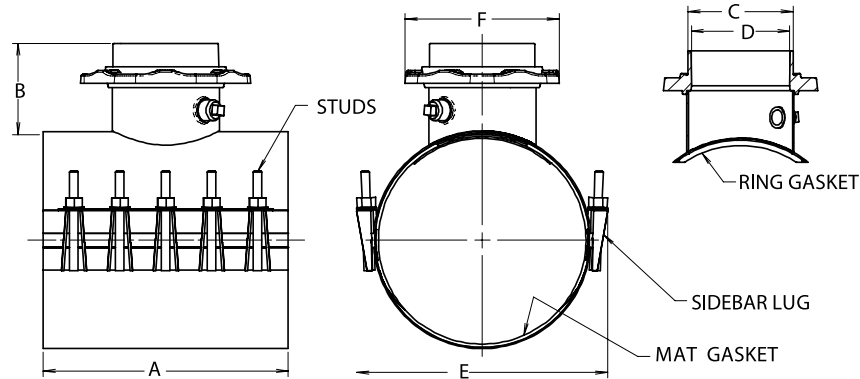
Ductile Iron Flange per ASTM A536, Grade 65-45-12. Will accommodate tapping flanges per MSS SP-60.

Stainless Steel Flange per ASTM A 240, type 304. Will accommodate tapping flanges per MSS SP-60.

Ductile Iron Mechanical Joint Outlet MJ style in accordance with AWWA standard C111. Cast from ductile (nodular) iron, meeting or exceeding ASTM A536, Grade 65-45-12.

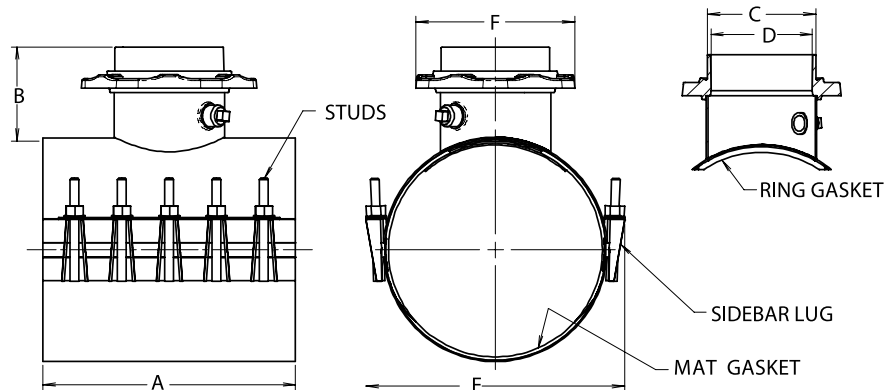
Stainless Steel Mechanical Joint Outlet MJ style in accordance with AWWA standard C111. Stainless steel per ASTM A351 CF3 (Type 304L).

SST with FLANGED OUTLET



FLANGE SIZE	CATALOG NUMBER	NO. OF BOLTS	A	B	C	D	E	E 1	F
4"	4.60 - 5.30	8	12.0	5.88	4.80	4.33	PIPE OD + 3.0	PIPE OD + 4.6	9.12
	5.60 - 19.30	10	16.0						
	19.70 - 26.50	14	20.0						
6"	7.00 - 17.95	10	16.0	6.88	6.90	6.43	PIPE OD + 3.0	PIPE OD + 4.6	11.1 2
	18.25 - 26.50	14	20.0						
8"	8.63 - 26.50	14	20.0	7.00	9.05	8.52	PIPE OD + 3.0	PIPE OD + 4.6	13.40
10"	10.73 - 26.50	16	24.0	7.50	11.10	10.5 1	PIPE OD + 3.0	PIPE OD + 4.6	15.70
12"	13.30 - 16.78	20	30.0	7.63	13.20	12.5 4	PIPE OD + 3.0	PIPE OD + 4.6	18.10
	17.55 - 26.50	30	30.0						

SST with MECHANICAL JOINT OUTLET



FLANGE SIZE	CATALOG NUMBER	NO. OF BOLT	A	B	C	D	E	E 1	F
4"	4.60 - 5.30	8	12.0	5.88	4.80	4.33	PIPE OD + 3.0	PIPE OD + 4.6	9.12
	5.60 - 19.30	10	16.0						
	19.70 - 26.50	14	20.0						
6"	7.00 - 17.95	10	16.0	6.88	6.90	6.43	PIPE OD + 3.0	PIPE OD + 4.6	11.1 2
	18.25 - 26.50	14	20.0						
8"	8.63 - 26.50	14	20.0	7.00	9.05	8.52	PIPE OD + 3.0	PIPE OD + 4.6	13.40
10"	10.73 - 26.50	16	24.0	7.50	11.10	10.5 1	PIPE OD + 3.0	PIPE OD + 4.6	15.70
12"	13.30 - 16.78	20	30.0	7.63	13.20	12.5 4	PIPE OD + 3.0	PIPE OD + 4.6	18.10
	17.55 - 26.50	30	30.0						

SST & SST-MJ SIZES & RANGES

NOM. PIPE SIZE	SLEEVE O.D. RANGE (inches)	SLEEVE NUMBER	BRANCH SIZE	APPROX. WEIGHT (lbs.)
4"	4.40 - 4.60	SST-4.60	3" 4"	28 30
	4.50 - 4.80	SST-4.80		
	4.70 - 5.00	SST-5.00		
	5.00 - 5.30	SST-5.30		
	5.30 - 5.60	SST-5.60		
	5.60 - 5.90	SST-5.90		
6"	5.90 - 6.25 ¹	SST-6.25	3" 4" 6"	36 38 45
	6.25 - 6.60 ¹	SST-6.60		
	6.60 - 7.00	SST-7.00		
	6.82 - 7.12	SST-7.12		
	6.90 - 7.30	SST-7.30		
	7.10 - 7.50	SST-7.50		
	7.50 - 7.90	SST-7.90		
8"	7.90 - 8.30 ²	SST-8.30	3" 4" 6" 8"	42 44 48 66
	8.30 - 8.63	SST-8.63		
	8.62 - 9.06	SST-9.06		
	8.97 - 9.37	SST-9.37		
	9.04 - 9.45	SST-9.45		
	9.20 - 9.60	SST-9.60		
	9.55 - 9.95	SST-9.95		
	9.90 - 10.30	SST-10.30		
10"	10.33 - 10.73 ³	SST-10.73	3" 4" 6" 8" 10"	45 48 55 70 80
	10.73 - 11.13	SST-11.13		
	11.02 - 11.42	SST-11.42		
	11.06 - 11.45	SST-11.45		
	11.45 - 11.85	SST-11.85		
	11.79 - 12.19	SST-12.19		
	12.10 - 12.50	SST-12.50		
12"	12.35 - 12.75 ^{4,5}	SST-12.75	3" 4" 6" 8" 10" 12"	50 52 60 81 96 143
	12.45 - 12.85 ^{4,5}	SST-12.85		
	12.70 - 12.90 ^{4,5}	SST-12.90		
	12.75 - 13.20 ^{4,5}	SST-13.20		
	12.90 - 13.30	SST-13.30		
	13.12 - 13.52	SST-13.52		
	13.16 - 13.56	SST-13.56		
	13.40 - 13.80	SST-13.80		
	13.70 - 14.10	SST-14.10		
	13.98 - 14.38	SST-14.38		
	14.38 - 14.80	SST-14.80		

¹ 6.25 & 6.60 sizes not available with 6" branch.

² 8.30 size not available with 8" branch.

NOM. PIPE SIZE	SLEEVE O.D. RANGE (inches)	SLEEVE NUMBER	BRANCH SIZE	APPROX. WEIGHT (lbs.)
14"	14.80 - 15.20	SST-15.20	3" 4" 6" 8" 10" 12"	62 64 74 81 95 154
	15.20 - 15.60	SST-15.60		
	15.60 - 16.00	SST-16.00		
	15.80 - 16.20	SST-16.20		
	16.00 - 16.40	SST-16.40		
	16.38 - 16.78	SST-16.78		
16"	16.78 - 17.20	SST-17.20	3" 4" 6" 8" 10" 12"	78 80 85 100 115 172
	17.15 - 17.55	SST-17.55		
	17.40 - 17.80	SST-17.80		
	17.55 - 17.95	SST-17.95		
	17.85 - 18.25	SST-18.25		
	18.20 - 18.60	SST-18.60		
	18.58 - 18.98	SST-18.98		
	18.90 - 19.30	SST-19.30		
18"	19.30 - 19.70	SST-19.70	3" 4" 6" 8" 10" 12"	81 85 89 115 139 191
	19.70 - 20.10	SST-20.10		
	19.80 - 20.20	SST-20.20		
	20.20 - 20.60	SST-20.60		
	20.60 - 21.00	SST-21.00		
	21.00 - 21.40	SST-21.40		
	21.40 - 21.80	SST-21.80		
20"	21.70 - 22.10	SST-22.10	3" 4" 6" 8" 10" 12"	81 85 89 115 140 205
	21.90 - 22.30	SST-22.30		
	22.30 - 22.70	SST-22.70		
	22.70 - 23.10	SST-23.10		
	23.00 - 23.40	SST-23.40		
	23.30 - 23.70	SST-23.70		
24"	23.60 - 24.00	SST-24.00	3" 4" 6" 8" 10" 12"	85 87 90 120 145 230
	23.80 - 24.20	SST-24.20		
	24.20 - 24.60	SST-24.60		
	24.60 - 25.00	SST-25.00		
	24.90 - 25.30	SST-25.30		
	25.30 - 25.70	SST-25.70		
	25.60 - 26.00	SST-26.00		
	25.90 - 26.30	SST-26.30		
	26.10 - 26.50	SST-26.50		

³ 10.73 size not available with 10" branch

⁴ 12.75 - 12.90 sizes: 1/2" undersize cutter recommended.

⁵ Not available with 12" MJ Outlet.

Other sizes are available on request.

SSTIII™

STAINLESS STEEL TAPPING SLEEVES



NSF NSF61 Certified Available Upon Request
Certified to NSF/ANSI 61-G

MATERIAL SPECIFICATIONS

SHELL AND LUGS: Stainless steel per ASTM A240, type 304 and type 304L.

TEST PLUG: 3/4" NPT type 304 Stainless Steel. Plug threads coated to prevent galling.

BOLTS: 5/8"-11 UNC thread track head, type 304 stainless steel per ASTM A 193.

NUTS: 5/8" heavy hex, type 304 Stainless Steel per ASTM A 194. Nuts coated to prevent galling.

WASHERS: Stainless steel per ASTM A240, type 304 and plastic lubricating washer.

GASKETS: SBR per ASTM D 2000 MAA 610, compounded for water and sewer service. Other compounds available on request.

MJ BOLTS & NUTS: 3/4" UNCT-Bolts, heavy hex nuts, high strength low alloy steel per AWWA C111.

OUTLET OPTIONS

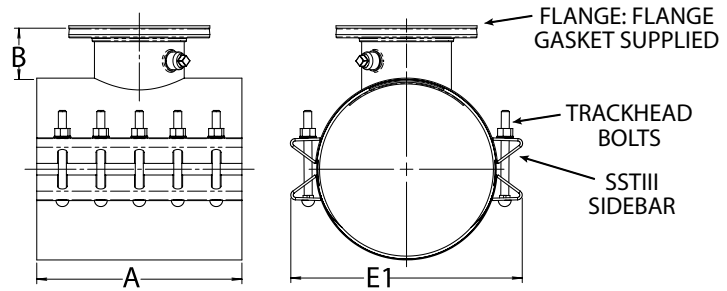
Ductile Iron Flange per ASTM A536, Grade 65-45-12. Will accommodate tapping flanges per MSS SP-60.

Stainless Steel Flange per ASTM A 240, type 304. Will accommodate tapping flanges per MSS SP-60.

Ductile Iron Mechanical Joint Outlet MJ style in accordance with AWWA standard C111. Cast from ductile (nodular) iron, meeting or exceeding ASTM A536, Grade 65-45-12.

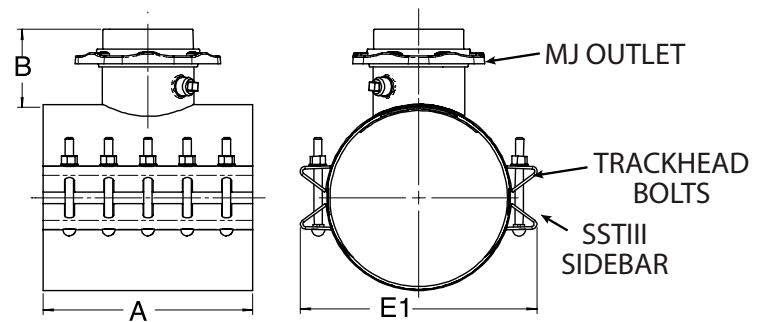
Stainless Steel Mechanical Joint Outlet MJ style in accordance with AWWA standard C111. Stainless steel per ASTM A351 CF3 (Type 304L).

SSTIII with FLANGED OUTLET



FLANGE SIZE	CATALOG NUMBER	NO. OF BOLTS	A	B	C	D	E	E1
3"	4.60 - 5.30	8	12.0	4.00	4.03	3 1/2	PIPE OD + 3.0	PIPE OD + 4.6
	5.60 - 19.30	10	16.0					
	19.70 - 26.50	14	20.0					
	27.80 - 32.00	21	20.0					
4"	4.60 - 5.30	8	12.0	4.00	5.03	4 1/2	PIPE OD + 3.0	PIPE OD + 4.6
	5.60 - 19.30	10	16.0					
	19.70 - 26.50	14	20.0					
	27.80 - 32.00	21	20.0					
6"	6.25 - 17.95	10	16.0	4.5	7.03	6 1/2	PIPE OD + 3.0	PIPE OD + 4.6
	18.25 - 26.50	14	20.0					
	27.80 - 32.00	21	20.0					
	8.30 - 26.50	14	20.0					
8"	27.80 - 32.00	21	20.0	5	9.03	8 1/2	PIPE OD + 3.0	PIPE OD + 4.6
	10.73 - 26.50	16	24.0					
10"	27.80 - 32.00	24	24.0	5.5	11.03	10 1/2	PIPE OD + 3.0	PIPE OD + 4.6
	12.75 - 16.78	20	30.0					
12"	17.55 - 26.50	20	30.0	5.75	13.03	12 1/2	PIPE OD + 3.0	PIPE OD + 4.6
	27.80 - 32.00	30	30.0					

SSTIII with MECHANICAL JOINT OUTLET



FLANGE SIZE	CATALOG NUMBER	NO. OF BOLTS	A	B	C	D	E	E1	F
4"	4.60 - 5.30	8	12.0	5.88	4.80	4.33	PIPE OD + 3.0	PIPE OD + 4.6	9.12
	5.60 - 19.30	10	16.0						
	19.70 - 26.50	14	20.0						
	27.80 - 32.00	21	20.0						
6"	7.00 - 17.95	10	16.0	6.88	6.90	6.43	PIPE OD + 3.0	PIPE OD + 4.6	11.12
	18.25 - 26.50	14	20.0						
	27.80 - 32.00	21	20.0						
	8.63 - 26.50	14	20.0						
8"	27.80 - 32.00	21	20.0	7.00	9.05	8.52	PIPE OD + 3.0	PIPE OD + 4.6	13.40
	10.73 - 26.50	16	24.0						
10"	27.80 - 32.00	24	24.0	7.50	11.10	10.51	PIPE OD + 3.0	PIPE OD + 4.6	15.70
	13.30 - 16.78	20	30.0						
12"	17.55 - 26.50	20	30.0	7.63	13.20	12.54	PIPE OD + 3.0	PIPE OD + 4.6	18.10
	27.80 - 32.00	30	30.0						

SSTIII & SSTIII-MJ SIZES & RANGES

NOM. PIPE SIZE	SLEEVE O.D. RANGE (inches)	SLEEVE NUMBER	BRANCH SIZE	APPROX. WEIGHT (lbs.)
4"	4.40 - 4.60	SSTIII-4.60	3" 4"	37 42
	4.50 - 4.80	SSTIII-4.80		
	4.70 - 5.00	SSTIII-5.00		
	5.00 - 5.30	SSTIII-5.30		
	5.30 - 5.60	SSTIII-5.60	3"	50
	5.60 - 5.90	SSTIII-5.90		
6"	5.90 - 6.25 ¹	SSTIII-6.25	3"	54
	6.25 - 6.60 ¹	SSTIII-6.60		
	6.60 - 7.00	SSTIII-7.00	6"	59
	6.82 - 7.12	SSTIII-7.12		
	6.90 - 7.30	SSTIII-7.30		
	7.10 - 7.50	SSTIII-7.50		
	7.50 - 7.90	SSTIII-7.90		
8"	7.90 - 8.30 ²	SSTIII-8.30	3" 4"	56 60
	8.30 - 8.63	SSTIII-8.63		
	8.62 - 9.06	SSTIII-9.06		
	8.97 - 9.37	SSTIII-9.37	6" 8"	63 83
	9.04 - 9.45	SSTIII-9.45		
	9.20 - 9.60	SSTIII-9.60		
	9.55 - 9.95	SSTIII-9.95		
	9.90 - 10.30	SSTIII-10.30		
	10.33 - 10.73 ³	SSTIII-10.73		
10.73 - 11.13	SSTIII-11.13			
11.02 - 11.42	SSTIII-11.42			
11.06 - 11.45	SSTIII-11.45			
11.45 - 11.85	SSTIII-11.85			
11.79 - 12.19	SSTIII-12.19			
12.10 - 12.50	SSTIII-12.50			
12"	12.35 - 12.75 ^{4,5}	SSTIII-12.75	3" 4"	65 68
	12.45 - 12.85 ^{4,5}	SSTIII-12.85		
	12.70 - 12.90 ^{4,5}	SSTIII-12.90		
	12.75 - 13.20 ^{4,5}	SSTIII-13.20	6" 8" 10" 12"	72 93 123 159
	12.90 - 13.30	SSTIII-13.30		
	13.12 - 13.52	SSTIII-13.52		
	13.16 - 13.56	SSTIII-13.56		
	13.40 - 13.80	SSTIII-13.80		
	13.70 - 14.10	SSTIII-14.10		
	13.98 - 14.38	SSTIII-14.38		
	14.38 - 14.80	SSTIII-14.80		
	14"	14.80 - 15.20		
15.20 - 15.60		SSTIII-15.60		
15.60 - 16.00		SSTIII-16.00	6" 8" 10" 12"	80 103 134 174
15.80 - 16.20		SSTIII-16.20		
16.00 - 16.40		SSTIII-16.40		
16.38 - 16.78		SSTIII-16.78		

NOM. PIPE SIZE	SLEEVE O.D. RANGE (inches)	SLEEVE NUMBER	BRANCH SIZE	APPROX. WEIGHT (lbs.)			
16"	16.78 - 17.20	SSTIII-17.20	3" 4" 6" 8" 10" 12"	92 96 102 110 140 205			
	17.15 - 17.55	SSTIII-17.55					
	17.40 - 17.80	SSTIII-17.80					
	17.55 - 17.95	SSTIII-17.95					
	17.85 - 18.25	SSTIII-18.25					
	18.20 - 18.60	SSTIII-18.60					
	18.58 - 18.98	SSTIII-18.98					
	18.90 - 19.30	SSTIII-19.30					
	18"	19.30 - 19.70			SSTIII-19.70	3" 4" 6" 8" 10" 12"	97 102 107 115 152 230
19.70 - 20.10		SSTIII-20.10					
19.80 - 20.20		SSTIII-20.20					
20.20 - 20.60		SSTIII-20.60					
20.60 - 21.00		SSTIII-21.00					
21.00 - 21.40		SSTIII-21.40					
20"		21.40 - 21.80	SSTIII-21.80	3" 4" 6" 8" 10" 12"	104 109 114 120 155 232		
	21.70 - 22.10	SSTIII-22.10					
	21.90 - 22.30	SSTIII-22.30					
	22.30 - 22.70	SSTIII-22.70					
	22.70 - 23.10	SSTIII-23.10					
	23.00 - 23.40	SSTIII-23.40					
	24"	23.30 - 23.70	SSTIII-23.70			3" 4" 6" 8" 10" 12"	107 112 117 124 158 236
23.60 - 24.00		SSTIII-24.00					
23.80 - 24.20		SSTIII-24.20					
24.20 - 24.60		SSTIII-24.60					
24.60 - 25.00		SSTIII-25.00					
24.90 - 25.30		SSTIII-25.30					
25.30 - 25.70		SSTIII-25.70					
25.60 - 26.00		SSTIII-26.00					
25.90 - 26.30		SSTIII-26.30					
26.10 - 26.50		SSTIII-26.50					
28"		27.20 - 27.80	SSTIII-27.80	3" 4" 6" 8" 10" 12"	185 190 195 202 236 314		
		27.80 - 28.40	SSTIII-28.40				
	28.40 - 29.00	SSTIII-29.00					
	29.00 - 29.60	SSTIII-29.60					
	30"	29.60 - 30.20	SSTIII-30.20			3" 4" 6" 8" 10" 12"	232 237 242 249 283 361
		30.20 - 30.80	SSTIII-30.80				
30.80 - 31.40		SSTIII-31.40					
31.40 - 32.00		SSTIII-32.00					

³ 10.73 size not available with 10" branch

⁴ 12.75 - 12.90 sizes: 1/2" undersize cutter recommended.

⁵ Not available with 12" MJ Outlet.

Other sizes are available on request.

¹ 6.25 & 6.60 sizes not available with 6" branch.

² 8.30 size not available with 8" branch.

ROMAC INDUSTRIES, INC.

Repair Clamps • Couplings • Expansion Joints • Pipe Restraint • Service Saddles
Tapping Sleeves • Tapping Machines • Valve Insertion • Waterworks Tools

1.800.426.9341 • www.romac.com

