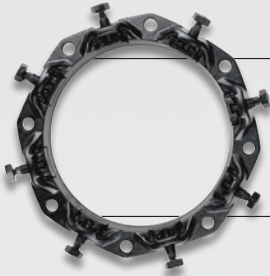


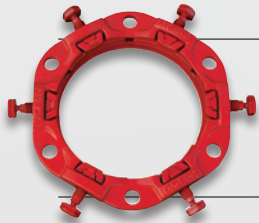
RomaGrip™

Precision Designed Pipe Restraint



RomaGrip

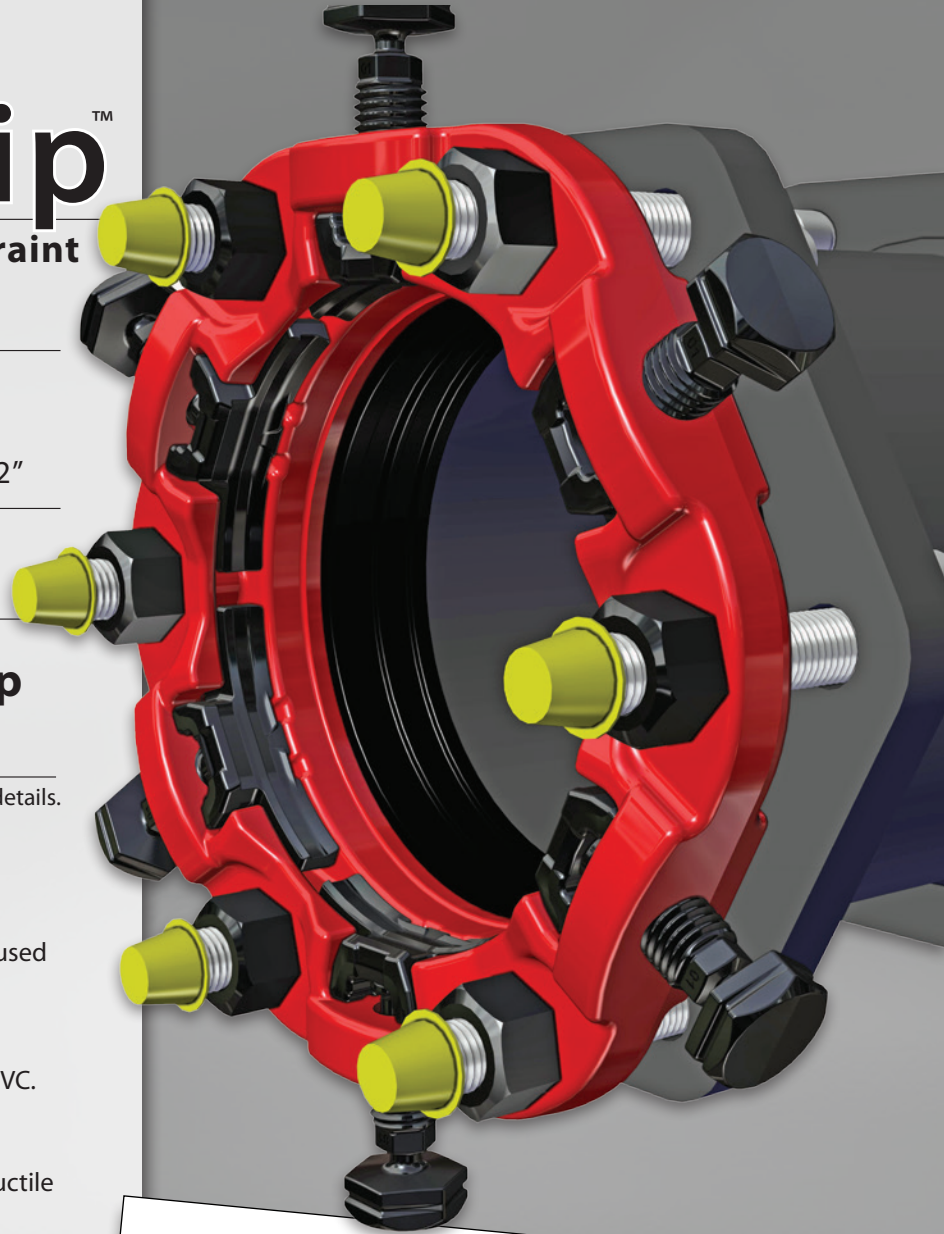
DI/CI Pipe: 3" - 48"
IPS Size Steel: 3" - 12"



PVC-RomaGrip

PVC Pipe: 3" - 24"

See pipe compatibility list for details.



EASY TO INSTALL

Because the radial bolts have the same size hex head as AWWA T-bolts, a single wrench can be used for installation.

No parts need to be removed from the PVC-RomaGrip™ to use it on either C900 or IPS PVC.

REDUCES INVENTORY

The available DI/IPS gasket will work on both Ductile Iron and IPS pipe diameters.

SAFE FOR THIN WALL PIPE

QuikGrip™ wedges and SofTouch™ bolts work together to firmly engage pipe wall safely.

SIMPLE TO MAINTAIN

RomaGrip™ components are mechanically secure so they won't fall off during shipping, installation, or in the event the RomaGrip must be removed from the pipe.

ROBUST DESIGN

The RomaGrip™ is designed to take whatever comes down the pipeline. Computer-generated solid models and 3-D finite element stress analysis assure that there is plenty of strength where it is needed.

MADE IN THE U.S.A.

RomaGrip restraints are cast, assembled, coated and packaged by Romac Industries in the U.S.A.

SUPERIOR CORROSION PROTECTION

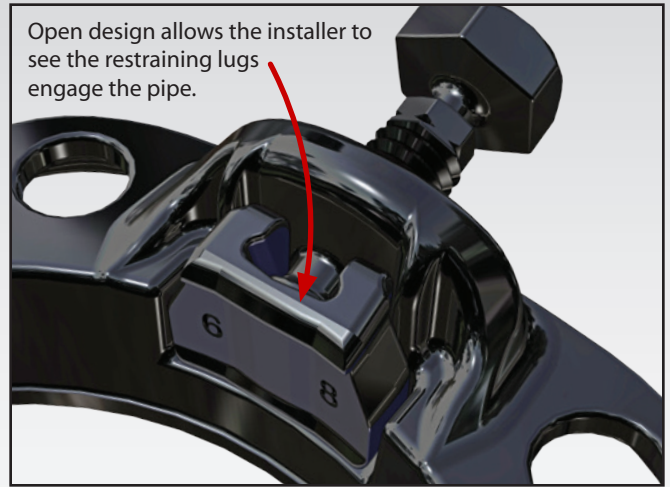
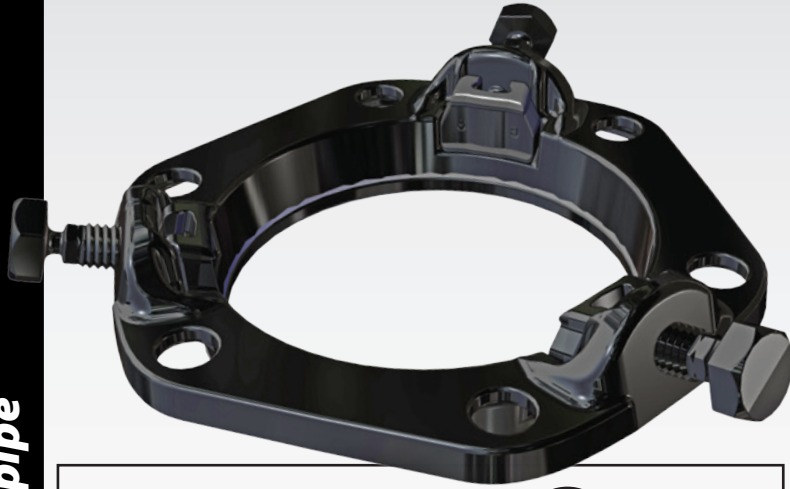
KEY CHARACTERISTICS	Romabond Polyester
Corrosion Resistance	++++
Edge Coverage	++++
Flexibility	++++
Durability (Weathering)	++++
Hardness	+++

RomaGrip restraints are available with Romac standard shop coat, and Romabond, a premium polyester coating specifically formulated for waterworks applications and fittings.

Romabond provides enhanced durability, UV protection and corrosion resistance. Flow-modified to create robust, holiday-free coating over blasted surface. The super-durable formula retains gloss and color longer than traditional coatings used in the market.

RomaGrip™

Precision Designed Ductile Iron Pipe Restraint



Open design allows the installer to see the restraining lugs engage the pipe.
QuikGrip™ heat treated radial restraining wedges engage the pipe and spread forces evenly.



SofTouch™ bolt heads shear off precisely when the proper torque is applied.

RomaGrip™ Material Specifications



Gland: Ductile (nodular) iron, meeting or exceeding ASTM A 536, Grade 65-45-12.

Gaskets: 3-24" sizes: A standard MJ gasket is used with this fitting. See ANSI/AWWA C111/A21.11 for gasket specs. For 30-48" sizes, SBR in accordance with ASTM D2000. Other compounds available for petroleum, chemical or high temperature service.

Restraining Bolt: Ductile (nodular) iron, meeting or exceeding ASTM A 536-84. (3-24" sizes: 7/8 -9 roll thread), (30-48" sizes: 1 1/4 - 7 roll thread)

Restraining Lugs: Ductile (nodular) iron, meeting or exceeding ASTM A 536-84. Heat treated using a proprietary process.

Coatings: Shop coat applied to the casting for corrosion protection in transit. Romabond polyester available upon request

Pipe Compatibility

- Ductile iron pipe: 3" - 48"
- Cast Iron pipe: 3" - 48" (same OD's as Ductile Iron)
- IPS Size Steel pipe: 3" - 12" with transition gasket and a minimum thickness per ASTM A53 std. weight class pipe.

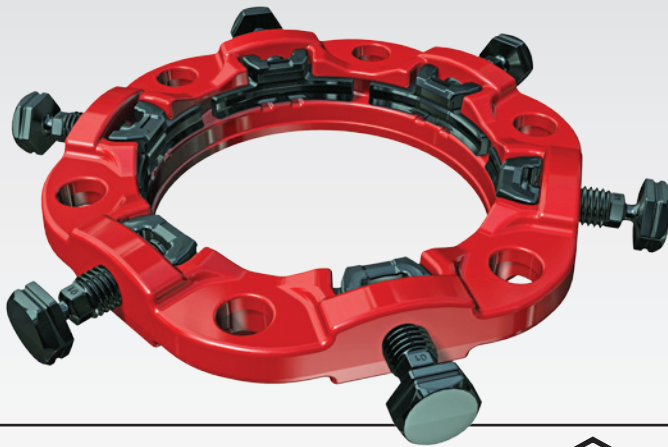
RomaGrip™

Nominal Pipe Size	Shipping Weight (lbs.)	Number of Restraint Wedges	Deflection Angle (degrees)	Pressure Rating (2:1 test)
3	8	2	5	350
4	11	2	5	350
6	17	3	5	350
8	22	4	5	350
10	31	6	5	350
12	37	8	5	350
14	53	10	2	350
16	62	12	2	350
18	68	12	1.5	250
20	78	14	1.5	250
24	98	16	1.5	250
30	295	20	1	250
36	380	24	1	250
42	595	28	1	250
48	730	32	1	250

This information is based on the best data available at the date printed, please check with Romac for any updates or changes.

PVC-RomaGrip™

Precision Designed PVC Pipe Restraint



SAFE FOR PVC

Pipe gripping restraining lugs cover virtually the whole pipe circumference, spreading out restraining forces and reducing stress.



SIMPLE INSTALLATION

RomaGrip™ restraining bolt heads twist off precisely when the proper torque has been applied.



REDUCES INVENTORY

The same PVC-RomaGrip™ can be used on C900 and IPS PVC pipe. An available DI/IPS gasket works on both C900 and IPS pipe, so one package can do it all.

PVC-RomaGrip™ Material Specifications



Gland: Ductile (nodular) iron, meeting or exceeding ASTM A 536, Grade 65-45-12.

Gasket: SBR, compounded for water and sewer service in accordance with ASTM D 2000 MBA 710. Other compounds available for petroleum, chemical, or high temperature service.

Restraining Bolts: 7/8 -9 roll thread, Ductile (nodular) iron, meeting or exceeding ASTM A 536.

Restraining Lugs: Ductile (nodular) iron, meeting or exceeding ASTM A 536. Heat treated using a proprietary process.

T-bolts and Nuts: HSLA steel T-head bolt. National coarse rolled thread and heavy hex nut. Steel meets AWWA C111 composition specifications. Stainless steel and R-Blue available upon request.

Coatings: Shop coat applied to cast parts for corrosion protection in transit. Romabond polyester available upon request.

PVC-RomaGrip™

Nominal Pipe Size	Shipping Weight (lbs.)	Number of Restraint Wedges	Gasket Range
3	11	4	3.50
4	15	4	4.50 - 4.80
6	20	6	6.63 - 6.90
8	24	6	8.63 - 9.05
10	30	8	10.75 - 11.10
12	37	8	12.75 - 13.20
14	58	10	15.30
16	68	12	17.40
18	80	12	19.50
20	87	14	21.60
24	112	16	25.80

PVC-RomaGrip™ PIPE COMPATIBILITY CHART

PIPE MATERIAL	PIPE SIZE	WORKING PRESSURE	RECOMMENDED TORQUE FOR T-BOLTS	RECOMMENDED TORQUE FOR RESTRAINING BOLTS
PVC - D.I. SIZE (C900 Class 165)	4" - 12"	RATING OF PIPE	45 - 60 FT-LBS	30 - 40 FT-LBS
PVC - D.I. SIZE (C900 Class 235 & 305)	4" - 12"	RATING OF PIPE	75 - 90 FT-LBS	TORQUE OFF HEADS
PVC - "CLASS PIPE" (IPS Size Less than ASTM D 2241 Class 160)	3" - 12"	RATING OF PIPE	45 - 60 FT-LBS	30 - 40 FT-LBS
PVC - "CLASS PIPE" (IPS Size ASTM D 2241 Class 160 & 200)	3"	RATING OF PIPE	45 - 60 FT-LBS	TORQUE OFF HEADS
PVC - "CLASS PIPE" (IPS Size ASTM D 2241 Class 160 & 200)	4" - 12"	RATING OF PIPE	75 - 90 FT-LBS	TORQUE OFF HEADS
PVC - SCHED. 40 & 80 ASTM D 1785	3"	RATING OF PIPE	45 - 60 FT-LBS	TORQUE OFF HEADS
PVC - SCHED. 40 & 80 ASTM D 1786	4" - 12"	RATING OF PIPE	75 - 90 FT-LBS	TORQUE OFF HEADS
PVC - D.I. SIZE (C909)	4" - 6"	235 PSI	75 - 90 FT-LBS	30 - 40 FT-LBS
PVC - D.I. SIZE (C909)	8"	235 PSI	75 - 90 FT-LBS	TORQUE OFF HEADS
PVC - D.I. SIZE (C909)	10" - 12"	150 PSI	75 - 90 FT-LBS	TORQUE OFF HEADS

*PRESSURE RATINGS ARE DESIGNED WITH A 2:1 SAFETY FACTOR

This information is based on the best data available at the date printed, please check with Romac for any updates or changes.

ROMAC INDUSTRIES, INC.

Repair Clamps • Couplings • Expansion Joints • Pipe Restraint • Service Saddles
Tapping Sleeves • Tapping Machines • Valve Insertion • Waterworks Tools

1.800.426.9341 • www.romac.com

