

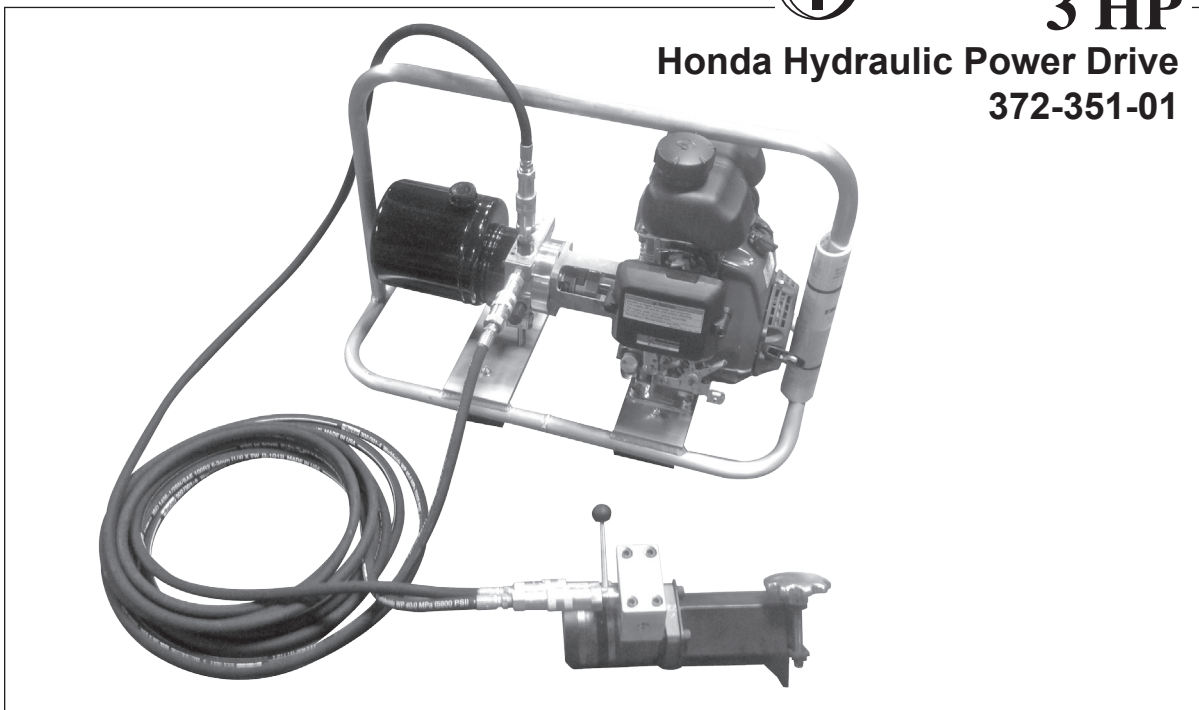


Transmate

3 HP

Honda Hydraulic Power Drive

372-351-01



Thank you for purchasing the Transmate 3 HP HONDA Hydraulic Power Unit. This unit will give you years of service if the simple instructions below are followed. Please read the enclosed Honda engine manual for engine performance characteristics and maintenance instructions.

The hydraulic power unit converts the power produced by the engine into hydraulic power in the oil. Not only does the oil produce power, but it also lubricates all mechanical components in the hydraulic system. Keeping this in mind, a proper selection of hydraulic oil is important for the proper operation and life of the unit. Hydraulic oil should be selected based on ambient outside temperature and number of continuous hours of use per day.

This unit has been used for many years to power the TapMate Too™ (351-00) with the hydraulic drive head attachment (372-351-05).

If you have any questions, please call us at 1-800-426-9341



POWER UNIT SPECIFICATIONS:

Unit weight - Dry:	47 lb.
Unit weight - with fluids full:	50 lb.
Fuel reservoir size:	1.47 US quarts
Engine type:.....	4-stroke, side valve, 1 cylinder
Displacement:.....	6.0 cu in
Maximum Output (Honda engine):	2.5 hp at/4,200 rpm*
Cooling system (Honda engine):	Forced Air
Ignition system (Honda engine):.....	Transistorized magneto
Lubrication system (Honda engine):.....	Forced Splash
Maximum pressure:	1200 psi
Maximum flow rate:	2 gpm
Hydraulic oil reservoir size:	1 gallons
Maximum allowable oil temperature:.....	180 degrees
Frame size.....	9 ¹ / ₂ " wide x 20" tall x 28" long.
Quick disconnects.....	Flush Face PN. 372-13-2 and 372-13-3

*Rated speed is 3,600 rpm.

Specifications are subject to change without notice.

This unit is equipped with the following items:

- Sturdy aluminum frame that encloses the entire power unit.
- Easy starting 3 HP Honda side valve engine.
- Recoil cord pull start engine.
- 1 gallon hydraulic reservoir.
- Totally enclosed pump for protection and elimination of reservoir to pump hoses and tubing.
- Flush faced Quick disconnects.

Operating Instructions:

1. Fill hydraulic oil reservoir to one (1) inch from the top of the reservoir. See oil specifications below. Overfilling the reservoir will result in oil flowing out the filler breather cap when the oil gets warm.
2. Check engine oil and fill as needed. See specifications below.
3. Check and fill gasoline tank if needed. See specifications below.
4. Check the Air Cleaner
5. Identify the pressure out port and the return port. The pressure port has a "P OUT" label stamped near it and a male quick disconnect threaded into it. The return port has a female quick disconnect threaded into it.
6. Hook the pressure hose to the pressure port and the return hose to the return port. The hoses "MUST BE" hooked up prior to starting the engine.
7. Turn the fuel valve to the "ON" position
8. Turn the engine switch to the "ON" position.
9. Move the throttle lever down slightly.
10. FOR STARTING A COLD ENGINE: Move the choke lever to the "CLOSED" position. FOR RESTARTING A WARM ENGINE: Do not use the choke.
11. Pull the starter grip lightly until resistance is felt, then pull briskly.
12. When the engine starts, slowly adjust the choke until the engine is running smoothly. Once the engine is warmed up turn the choke off.
13. Position the throttle to "fast" as indicated.

Maintenance Instructions:

1. Read engine manual for proper maintenance schedule.
2. Change hydraulic oil every 3 - 12 months depending upon use.

Fluids:

1. Gasoline

Regular unleaded with an octane rating of 87 or higher.

2. Hydraulic oil

High quality oil ISO VG 32-68

Shell Tellus T 32 - 68 or equivalent

As outside temperature conditions vary so widely please consult your hydraulic oil distributor or manufacturer for proper hydraulic oil selection.

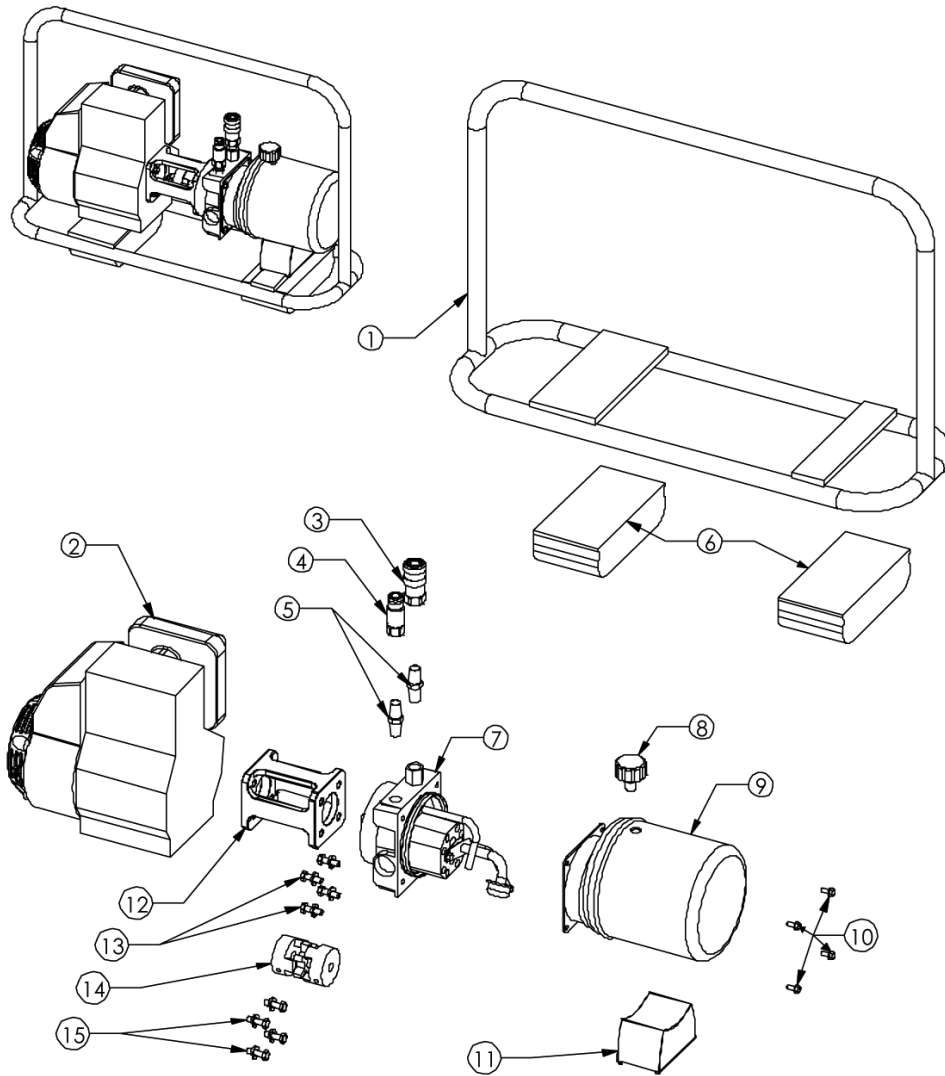
3. Engine Oil

High quality oil 10w - 30 or 10W - 40 only.

Common problems:

- | | |
|---|--|
| 1. Engine will no start. | Check gas tank, turn on gas valve.
Connect hoses to unit or position bypass valve to off. |
| 2. Pump developing flow but no pressure | Call Transmate at 1 800-426-9341. |
| 3. Hydraulic oil is milky white | Change fluid immediately, it is water contaminated. |

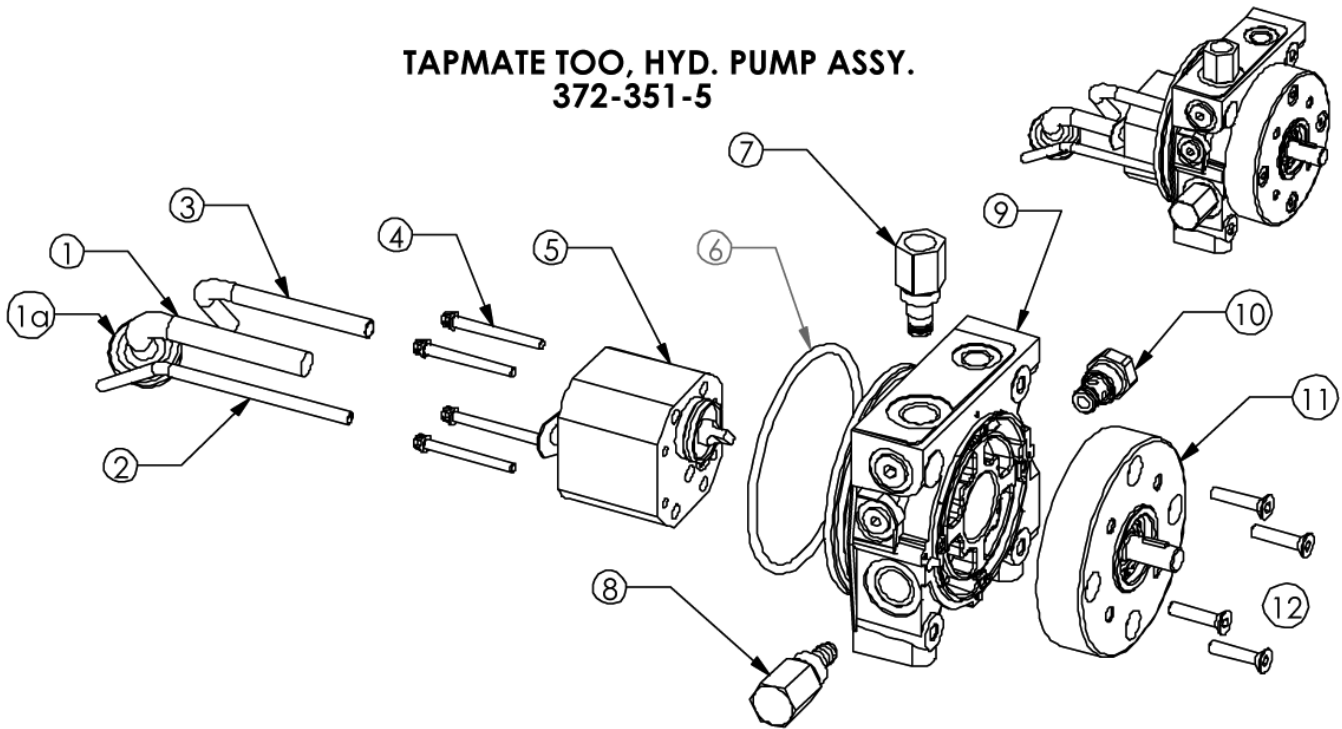
**HD HYDRAULIC BASE UNIT
WITH RESERVOIR, 3 HP HONDA
372-351-01**



**HD HYDRAULIC BASE UNIT
WITH RESERVOIR, 3 HP HONDA 372-351-01**

- | | | |
|-----|-------------|--|
| 1) | 372-351-21 | TAPMATE TOO, HYD. ALUMINUM FRAME |
| 2) | 372-351-30 | TAPMATE TOO, HYD. 3hp HONDA ENGINE |
| 3) | 372-13-3 | HD QUICK DISCONNECT, FEMALE 3/8" FLUSH FACE |
| 4) | 372-13-2 | HD QUICK DISCONNECT, MALE 3/8" FLUSH FACE |
| 5) | 372-13-11 | HD 3/8" 3/8" NPT HYD. NIPPLE |
| 6) | 372-351-22 | TAPMATE TOO, HYD. ALUMINUM FRAME FOOT PADS |
| 7) | 372-351-5 | TAPMATE TOO, HYD. PUMP ASSY. |
| 8) | 372-2500006 | TAPMATE TOO, HYD. RESERVOIR BREATHER CAP |
| 9) | 372-2280555 | TAPMATE TOO, HYD. RESERVOIR TANK |
| 10) | ----- | TAPMATE TOO, HYD. RESERVOIR TANK CAP SCREW, 1/4"-20 x 1/2" |
| 11) | 372-351-23 | TAPMATE TOO, HYD. RESERVOIR TANK SUPPORT PAD |
| 12) | 372-351-24 | TAPMATE TOO, HYD. C-FACE BRACKET ADAPTER |
| 13) | ----- | 5/16"-18 x 1" BOLTS W/ 5/16" LOCK WASHERS |
| 14) | 372-351-25 | TAPMATE TOO, MOTOR COUPLER KIT |
| 15) | ----- | 8mm x 1.25 BOLTS W/ 5/16" LOCK WASHERS |

TAPMATE TOO, HYD. PUMP ASSY. 372-351-5



- | | | |
|-----|-------------|--|
| 1) | 372-2310079 | TAPMATE TOO, INLET TUBE |
| 1a) | 372-2430011 | TAPMATE TOO, INLET STRAINER |
| 2) | 372-2310025 | TAPMATE TOO, RELIEF VALVE RETURN TUBE |
| 3) | 372-2310054 | TAPMATE TOO, RELEASE VALVE RETURN TUBE |
| 4) | ----- | TAPMATE TOO, HYD. GEAR PUMP BOLTS |
| 5) | 372-1300171 | TAPMATE TOO, HYD. GEAR PUMP KIT |
| 6) | 372-11 | HD, HYD. RESERVOIR O-RING, 2-348 |
| 7) | 372-1300191 | TAPMATE TOO, PORT PLUG KIT |
| 8) | 372-1300021 | HD, PRESSURE RELIEF VALVE KIT |
| 9) | 372-1300209 | TAPMATE TOO, CENTER ADAPTER KIT |
| 10) | 372-2180060 | HD, CHECK VALVE KIT |
| 11) | 372-1300335 | HD, EXTENDED SHAFT DRIVE KIT |
| 12) | ----- | HD, EXTENDED SHAFT DRIVE BOLTS |