

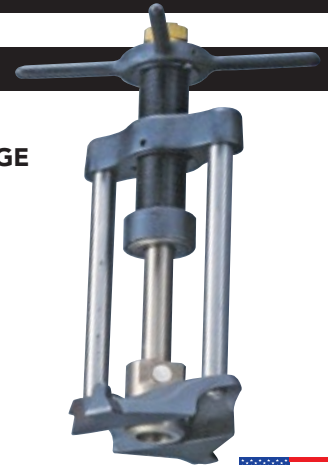


TAPMATE DRY TAP™

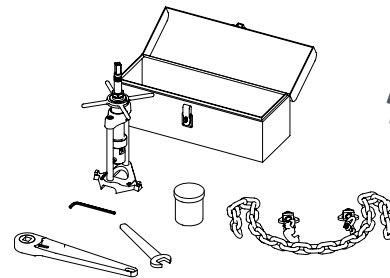
DRY DRILLING & TAPPING MACHINE

MATERIAL SPECIFICATIONS

- Weighs approximately 28 lbs.
- Easy to use, with or without power drive.
- 3/4" through 1" drill/taps through all types of mains.
- Drilling shaft is completely supported at two points for rigidity.
- Uses B-1 drill/tap holder and accessories.
- Lightweight and sturdy construction.
- Conforms to pipe sizes 3" or larger (Extra chain lengths required for 18" mains or larger).



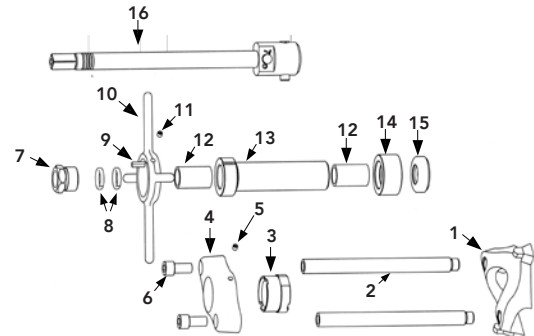
3/4" TO 1" RANGE OF CUTS



TO ORDER:

1. Order Base Machine.
2. Order Drill/Taps per cut size, thread type and tap size.
3. Order Power Option if desired.

TAPMATE DRY TAP PARTS

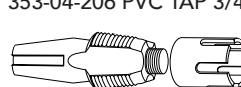


| ITEM NUMBER | DESCRIPTION | LIST PRICE |
|---|--|-------------------|
| 357-00 | TapMate Dry Tap | \$4,249.78 |
| Included with Dry Tap Machine: | | |
| 353-60-11 | Ratchet Wrench (5/8" sq. drive) | included |
| 357-55 | Delta ring chain assembly | included |
| 353-11-1 | Drill Tap Holder | included |
| 353-60-22 | 1 5/16" Open End Wrench | included |
| 353-60-32 | 1/4" Allen Wrench | included |
| 353-10-1 | Tapping Compound | included |
| 355-61 | Tool Box | included |
| OPTIONAL STRAPS AVAILABLE | | |
| 357-66 | 48" Strap (includes Strap Ratchet) | 348.83 |
| 357-100 | Long Strap (for 14" to 24" diameter mains) | 218.08 |
| 356-11 | Chain, Round Link | 119.35 |
| Call for longer straps | | |
| PVC DRILL AND TAPS (require both tap and cutter) | | |
| For PVC Only | | |
| 353-04-206 | 3/4" PVC Tap: 5956 (AWWA CC thread) | 1,074.86 |
| 355-01-210 | 3/4" PVC Cutter - 5957-3/4" | 518.65 |
| 353-04-208 | 1" PVC Tap: 5956 (AWWA CC thread) | 1,160.55 |
| 353-01-206 | 1" PVC Cutter: 5975-1 (makes 1 1/4" hole) | 519.88 |
| DRILL / TAPS | | |
| For Ductile, Cast Iron & A/C | | |
| 353-02-106 | 3/4" Iron Pipe Drill/Tap: 5951 | 761.17 |
| 353-02-108 | 1" Iron Pipe Drill/Tap: 5951 | 807.31 |
| 353-02-206 | 3/4" AWWA CC Drill/Tap: 5952 | 538.68 |
| 353-02-208 | 1" AWWA CC Drill/Tap: 5952 | 736.53 |
| POWER OPTION | | |
| 373-357 | Ridgid 690-I Electric Drive w/ 5/8" sq. Drive Adapter See pg TM-28 | 5,120.74 |
| 370-70 | GF-15 Ground Fault Interrupter Plug (required) | 219.13 |
| TAPPING COMPOUND | | |
| 353-10-1 | Tapping Compound | 56.44 |
| 353-10-3 | Tapping Compound/ Case (12) | 650.93 |

| REF. NO. | ITEM NUMBER | DESCRIPTION | LIST PRICE |
|-----------|-------------|-----------------------------|------------|
| 1 | 357-08 | Saddle | \$296.77 |
| 2 | 357-35 | Column | 129.64 |
| 3 | 357-28-1 | Top Yoke Insert | 229.92 |
| 4 | 357-28 | Top Yoke | 511.45 |
| 5 | 351-23-512 | Lead Tube Set Screw | 2.20 |
| 6 | 357-35-51 | Column Bolts (Qty 2) | ea 12.05 |
| 7 | 353-26-39 | Head Gland Nut | 112.32 |
| 8 | 353-26-573 | Head Gland Packing (Qty 2) | ea 15.75 |
| 9 | 351-24-66 | Lead Nut Key | 8.64 |
| 10 | 351-29-1 | Handle | 270.83 |
| 11 | 351-51-2 | Arbors & Handle Set Screw | 2.20 |
| 12 | 353-26-62 | Head Bronze Bushing (Qty 2) | ea 44.87 |
| 13 | 357-43 | Feed Screw Complete | 610.84 |
| 14 | 357-22 | Bearing Housing | 218.96 |
| 15 | 357-56 | Thrust Bearing | 74.19 |
| 16 | 353-11-1 | Drill/Tap Holder Assembly | 1,093.17 |

CUTTING DRILL/TAPS

355-01-210 PVC CUTTER 3/4"
353-04-206 PVC TAP 3/4" CC



353-01-206 PVC CUTTER 1"
353-04-208 PVC TAP 1" CC

IRON PIPE DRILL / TAP
AWWA CC DRILL / TAP