

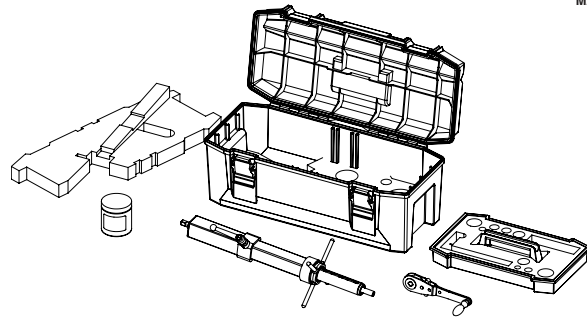
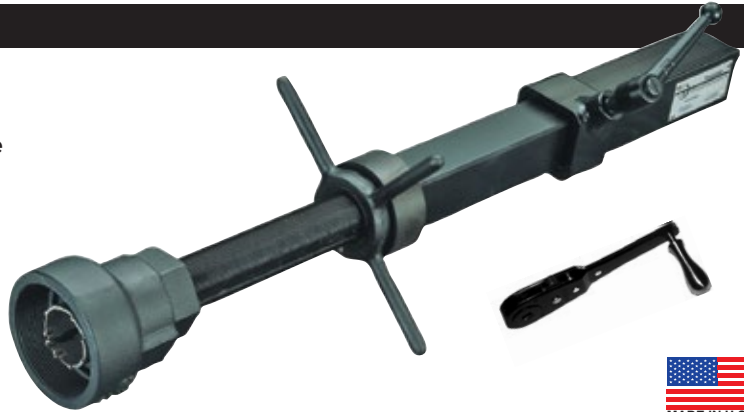
# TAPMATE TOO™

## 3/4" TO 2" RANGE OF CUTS



### MATERIAL SPECIFICATIONS

- Weighs 10 lbs., allowing easy handling and operation.
- Safety brake provides controlled boring bar release on high pressure cuts.
- Sturdy construction with more than 12" of boring bar travel.
- Taps any pipe commonly used in underground water mains.
- Simple construction allows in-house maintenance and repair.



**TO ORDER:**

1. Order Base Machine.
2. Order Cutters or Spade Bits per desired pipe type and size.
3. Order Adapters per size and corp outlet type.
4. Order Arbors per size.
5. Select Power Option.

ITEM NUMBER	DESCRIPTION	LIST PRICE
351-00	Base Machine and Tool Box	\$ 2,865.90
Included with Tapmate Too Machine:		
351-60-1	Hand Ratchet	included
351-61	Tool Box	included
353-10-1	Tapping Compound	included

### POWER OPTIONS YOU CHOOSE HOW TO POWER YOUR TAPMATE TOO...

**TapMate Too Hydraulic Drive**

\*372-351

SEE PAGE TM-29



**Ridgid 690-I Electric Drive**

SEE PAGE TM-28

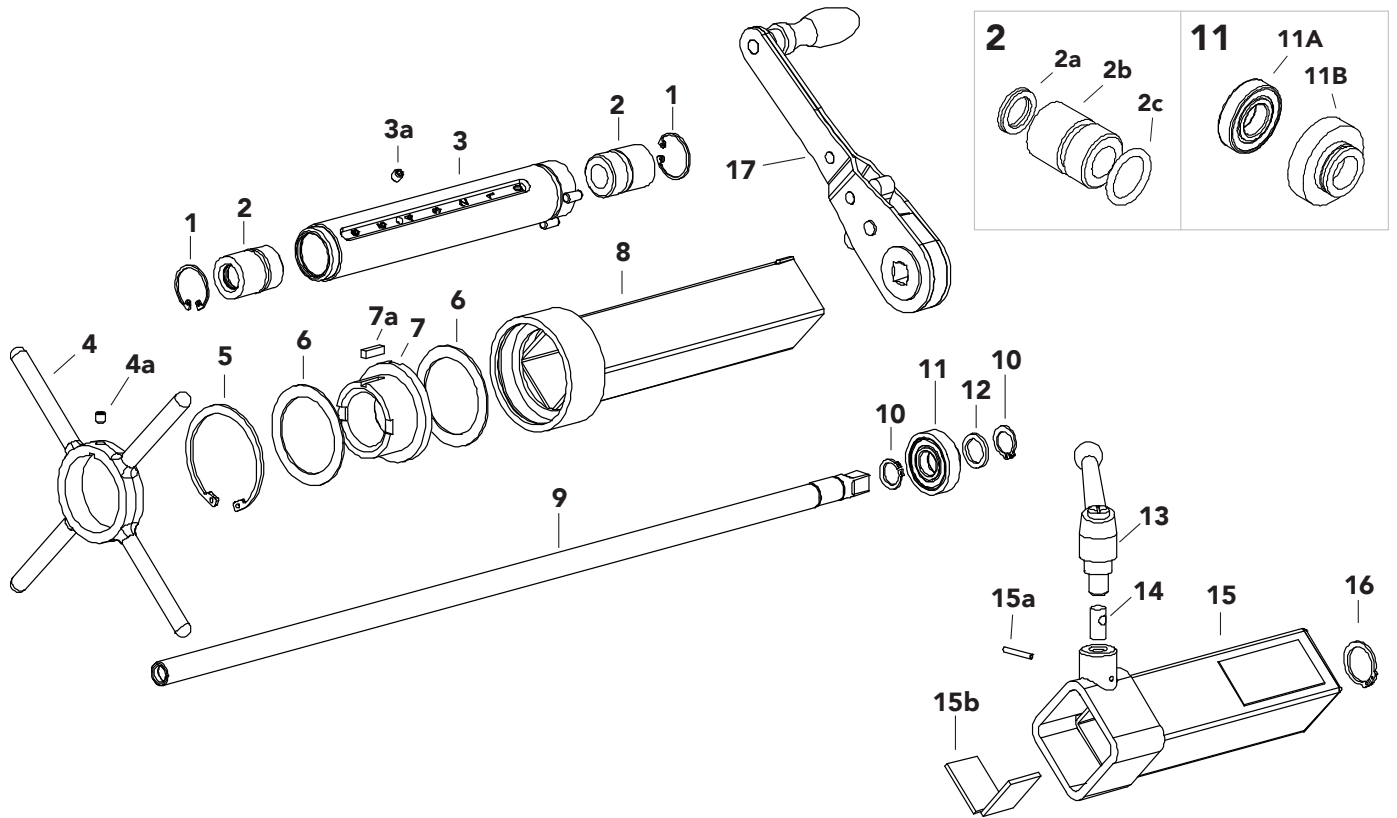


ITEM NUMBER	DESCRIPTION	LIST PRICE
*372-351	TapMate Too Hydraulic Drive System complete	\$ 9,226.30
*372-351-01	Base Unit	included
373-351	Ridgid 690-I Electric Drive with 1/2" Adapter for TM-Too	\$5,120.74 included
370-70	GF-15 Ground Fault Interrupter Plug (required)	219.13

\*Considered Hazardous Material When Shipped by Air. For other power options, contact Romac Industries, Inc.



# TAPMATE TOO™ PARTS LIST



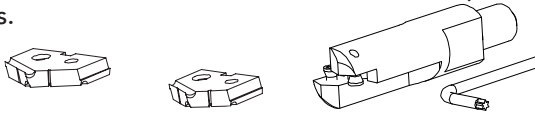
REF. NUMBER	DESCRIPTION	ITEM NUMBER	LIST PRICE
1	Lead Tube Snap Ring (2 required)	351-23-54	ea. \$ 4.28
2	Lead Tube Bushing Complete (includes Bushing, Shaft Seal,O-Ring)	351-22-2A	134.27
2a	Poly Pak Shaft Seal	351-57-2	11.16
2b	Lead Tube Bushing	351-22-2	123.01
2c	Lead Tube Bushing O-Ring	351-57-1-62	2.20
3	Lead Tube	351-23	673.19
3a	Lead Tube Set Screw	351-23-512	2.20
4	Handle for Lead Nut	351-29-1	270.83
4a	Arbor & Handle Set Screw	351-51-2	2.20
5	Lead Nut Snap Ring	351-24-54	6.69
6	Lead Nut Nylatron Washers (2 required)	351-24-531	ea. 26.42
7	Lead Nut	351-24	270.83
7a	Lead Nut Key	351-24-66	8.64
8	Thrust Tube	351-32	219.61
9	Shaft	351-20	331.19
10	Shaft End Snap Ring (2 required)	351-20-54	ea. 4.28
11	Shaft End Bushing Complete	351-22-1A	201.30
11a	Shaft End Bearing	351-20-56	89.43
11b	Shaft End Bushing	351-22-1	147.64
12	Shaft End Nylatron Washer	351-20-531	15.68
13	Brake Handle	351-29-2	67.17
14	Brake Pin	351-50-2	55.14
15	Brake Tube (includes Brake Pads)	351-30	494.29
15a	Roll Pin	351-50-3	2.20
15b	Brake Pad (2 required)	351-30-1	ea. 26.46
16	Shaft End Bushing Snap Ring	351-22-54	ea. 4.28
17	Ratchet Wrench	351-60-1	365.40
<b>NOT ILLUSTRATED</b>			
	Toolbox	351-61	336.55

# TAPMATE TOO™ ACCESSORIES



## SPADE BITS

The spade bit provides a low cost alternative to the traditional twist drill bit, pilot and holesaw/cutters. Spade bits are attached to the spade bit holder using the two Torx™ screws provided. Spade bits are available in the 3/4" nominal (23/32" actual), and the 1" nominal (7/8" actual) sizes. Not for use on plastic pipes.



ITEM NUMBER	DESCRIPTION	LIST PRICE
351-03-106	3/4" Spade Bit (actual O.D. 23/32")	\$ 127.96
351-03-108	1" Spade Bit (actual O.D. 7/8")	134.27
351-03-12	Spade Bit Holder (includes Torx Key Wrench and Screws; required for Spade Bit use)	458.51
351-60-5	Torx Key Wrench	13.45
351-03-512	Spade Bit Screw (2 required)	ea. 9.74

## HOLESAWS

Five types of Holesaws are available in 5 sizes

- The carbide cutter is best for use on A/C, Cast Iron, or Ductile Iron pipe.
- The HSS carbide tipped Holesaw works well on ductile iron, cast iron and A/C.
- The Bi-Metal holesaw is best for use with Steel Pipe, but may be used for ductile, cast iron and A/C as well.
- The PVC Cutter is necessary for cutting into plastic pipe.
- Special deep throated cutters for HDPE (see page TM-7) are also available.

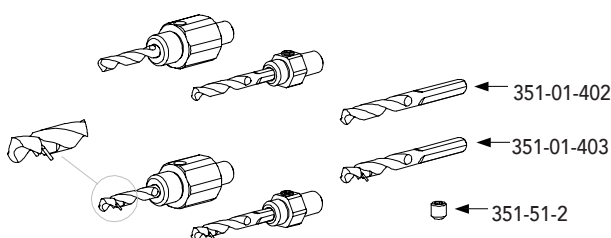


HOLESAW SIZE CHART			
NOMINAL	O.D.	NOMINAL	O.D.
3/4"	1 1/16"	1 1/2"	1 3/8"
1"	7/8"	2"	1 3/4"
1 1/4"	1 1/8"		

ITEM NUMBER	DESCRIPTION	LIST PRICE
<b>For Ductile, Cast Iron &amp; A/C</b>		
351-01-106	3/4" Carbide Cutter	\$ 210.31
351-01-108	1" Carbide Cutter	237.06
351-01-110	1 1/4" Carbide Cutter	249.12
351-01-112	1 1/2" Carbide Cutter	268.45
351-01-116	2" Carbide Cutter	362.37
<b>For Ductile, Cast Iron &amp; A/C</b>		
351-01-406	3/4" HSS Carbide Tip Holesaw	73.81
351-01-408	1" HSS Carbide Tip Holesaw	86.81
351-01-410	1 1/4" HSS Carbide Tip Holesaw	95.37
351-01-412	1 1/2" HSS Carbide Tip Holesaw	109.69
351-01-416	2" HSS Carbide Tip Holesaw	122.84
<b>For Ductile, Cast Iron, A/C &amp; Steel</b>		
351-01-506	3/4" Bimetal Holesaw	41.53
351-01-508	1" Bimetal Holesaw	46.99
351-01-510	1 1/4" Bimetal Holesaw	49.18
351-01-512	1 1/2" Bimetal Holesaw	51.47
351-01-516	2" Bimetal Holesaw	67.17
<b>For PVC Only</b>		
351-01-206	3/4" PVC Cutter	218.78
351-01-208	1" PVC Cutter	223.73
351-01-210	1 1/4" PVC Cutter	246.12
351-01-212	1 1/2" PVC Cutter	268.45
351-01-216	2" PVC Cutter	290.84

## HOLESAW ARBORS

The arbors mate the end of the shaft to the holesaw/cutter being used. Two arbors are available. The Small Arbor accommodates 3/4" - 1 1/4" cuts. The Large Arbor is necessary for 1 1/2" and 2" cuts. For plastic pipes, use Arbor without Pilot Drill installed. Pilot drills are not for use on plastic pipes.



ITEM NUMBER	DESCRIPTION	LIST PRICE
351-14-1	Small Holesaw Arbor, includes Arbor Pilot Drill 351-01-402 (for 3/4", 1" and 1 1/4" holesaws/cutters)	\$143.22
351-14-2	Large Holesaw Arbor, includes Arbor Pilot Drill 351-01-402 (for 1 1/2" and 2" holesaws/cutters)	223.73
351-01-402	1/4" Arbor Pilot Drill (for Small and Large Holesaw Arbor)	29.07
351-01-403	1/4" Arbor Pilot Drill w/Retaining Spring	53.28
351-51-2	Arbor & Handle Set Screw	2.20
351-14-5	Small Holesaw Arbor, includes Arbor Pilot Drill 351-01-403 (for 3/4", 1" and 1 1/4" holesaws/cutters)	167.42
351-14-6	Large Holesaw Arbor, includes Arbor Pilot Drill 351-01-403 (for 1 1/2" and 2" holesaws/cutters)	247.90

TRANSMATE

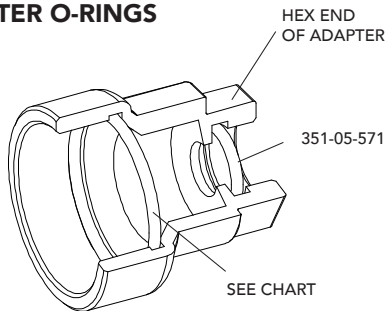


# TAPMATE TOO™ ACCESSORIES

## ADAPTERS

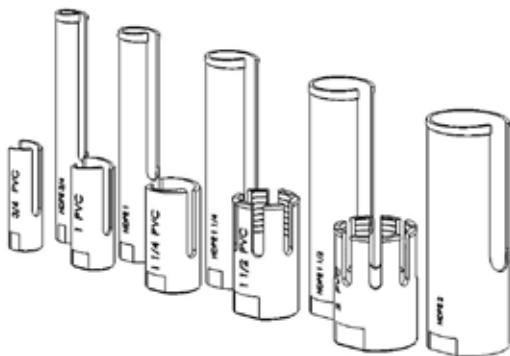
ITEM NUMBER	DESCRIPTION	LIST PRICE	ITEM NUMBER	DESCRIPTION	LIST PRICE
<i>Note: Adapter thread description describes thread machined on the adapter</i>					
351-05-406	3/4" Female Iron Pipe Adapter	\$ 230.65	351-05-606	3/4" Male Iron Pipe Adapter	\$ 230.65
351-05-408	1" Female Iron Pipe Adapter	230.65	351-05-608	1" Male Iron Pipe Adapter	230.65
351-05-410	1 1/4" Female Iron Pipe Adapter	230.65	351-05-610	1 1/4" Male Iron Pipe Adapter	230.65
351-05-412	1 1/2" Female Iron Pipe Adapter	230.65	351-05-612	1 1/2" Male Iron Pipe Adapter	230.65
351-05-416	2" Female Iron Pipe Adapter	230.65	351-05-616	2" Male Iron Pipe Adapter	230.65
351-05-420	2 1/2" Female Iron Pipe Adapter	230.65	351-05-706	3/4" Fine Thread Compression Adapter	230.65
351-05-506	3/4" Coarse Thread Compression Adapter	230.65	351-05-708	1" Fine Thread Compression Adapter	230.65
351-05-508	1" Coarse Thread Compression Adapter	230.65	351-05-710	1 1/4" Fine Thread Compression Adapter	230.65
351-05-510	1 1/4" Coarse Thread Compression Adapter	230.65	351-05-712	1 1/2" Fine Thread Compression Adapter	230.65
351-05-512	1 1/2" Coarse Thread Compression Adapter	230.65	351-05-716	2" Fine Thread Compression Adapter	230.65
351-05-516	2" Coarse Thread Compression Adapter	230.65	<i>* Corp. Stop Adapter Cross Reference at www.romac.com/tapmate-too</i>		

## REPLACEMENT ADAPTER O-RINGS



ITEM NUMBER	DESCRIPTION	LIST PRICE
351-05-571	TT Adapter O-Ring (All TT Adapters)	\$ 4.48
351-05-5571-1	TT Adapter O-Ring 3/4" Coarse Thread Compression	4.48
351-05-5571-2	TT Adapter O-Ring 1" Coarse Thread Compression	4.48
351-05-5571-3	TT Adapter O-Ring 1 1/4" Coarse Thread Compression	4.48
351-05-5571-4	TT Adapter O-Ring 1 1/2" Coarse Thread Compression	4.48
351-05-5571-5	TT Adapter O-Ring 2" Coarse Thread Compression	4.48
351-05-706-57	TT Adapter O-Ring 3/4" Fine Thread Compression	4.48
351-05-708-57	TT Adapter O-Ring 1" Fine Thread Compression	4.48
351-05-710-57	TT Adapter O-Ring 1 1/4" Fine Thread Compression	4.48
351-05-712-57	TT Adapter O-Ring 1 1/2" Fine Thread Compression	4.48
351-05-716-57	TT Adapter O-Ring 2" Fine Thread Compression	4.48

## HDPE ADAPTERS & HOLESAWS



**NOTE:** HDPE cutters require HDPE adapters. This is due to the increased overall length (illustrated above with PVC cutters)

ITEM NUMBER	DESCRIPTION	LIST PRICE
<i>Note: Adapter thread description describes thread machined on the adapter</i>		
351-05-106	3/4" HDPE Female Iron Pipe Adapter	\$ 633.10
351-05-108	1" HDPE Female Iron Pipe Adapter	635.93
351-05-110	1 1/4" HDPE Female Iron Pipe Adapter	650.07
351-05-112	1 1/2" HDPE Female Iron Pipe Adapter	674.59
351-05-116	2" HDPE Female Iron Pipe Adapter	697.24
351-05-906	3/4" HDPE Coarse Thread Compression Adapter	633.10
351-05-908	1" HDPE Coarse Thread Compression Adapter	635.93
351-05-910	1 1/4" HDPE Coarse Thread Compression Adapter	650.07
351-05-912	1 1/2" HDPE Coarse Thread Compression Adapter	674.59
351-05-916	2" HDPE Coarse Thread Compression Adapter	697.24
351-05-206	3/4" HDPE Male Iron Pipe Adapter	633.10
351-05-208	1" HDPE Male Iron Pipe Adapter	635.93
351-05-210	1 1/4" HDPE Male Iron Pipe Adapter	650.07
351-05-212	1 1/2" HDPE Male Iron Pipe Adapter	674.59
351-05-216	2" HDPE Male Iron Pipe Adapter	697.24
351-01-906	3/4" HDPE Cutter	744.74
351-01-908	1" HDPE Cutter	749.00
351-01-910	1 1/4" HDPE Cutter	763.10
351-01-912	1 1/2" HDPE Cutter	777.02
351-01-916	2" HDPE Cutter	791.36