



STYLE SL2 (TWO SECTION) WIDER RANGE .80" w/ REMOVABLE BOLTS

MATERIAL SPECIFICATIONS

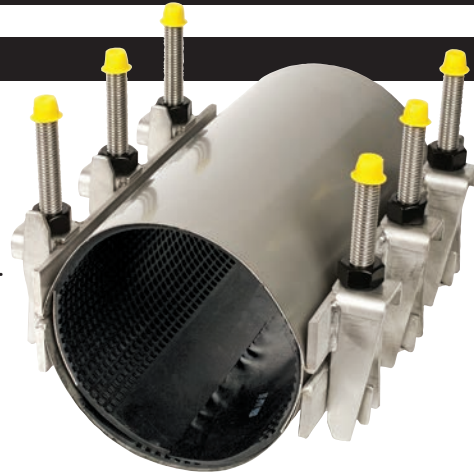
SHELLS AND LUGS: Stainless steel per ASTM A240, type 304.

BOLTS: UNC rolled thread, type 304 stainless steel.

NUTS: Stainless steel per ASTM A194, type 304. Coated to prevent galling.

WASHERS: Stainless steel, type 304 and plastic lubricating washers.

GASKETS: SBR per ASTM D2000 MAA 610. Compounded for water and sewer service. Other compounds available on request.



SL2-7.64 x 12" REPAIR CLAMP

NSF61 certified upon request.

MEETS
AWWA C230

NOM. PIPE SIZE	O.D. RANGE (inches)	CATALOG NUMBER	LENGTH				
			8"	10"	12"	16"	20"
4"	4.77 - 5.57 5.20 - 6.00	SL2 - 5.57 x length SL2 - 6.00 x length ¹	\$737.10	\$1,039.69	\$1,092.21	\$1,449.75	\$1,837.88
6"	6.57 - 7.37 6.84 - 7.64 7.20 - 8.00	SL2 - 7.37 x length SL2 - 7.64 x length SL2 - 8.00 x length ¹	780.22	1,086.28	1,144.04	1,516.50	1,933.25
8"	8.59 - 9.39 8.99 - 9.79 9.20 - 10.00	SL2 - 9.39 x length SL2 - 9.79 x length SL2-10.00 x length ¹	840.03	1,117.22	1,408.07	1,604.89	2,051.30
10"	10.70 - 11.50 11.04 - 11.84 11.40 - 12.20	SL2-11.50 x length SL2-11.84 x length SL2-12.20 x length	N/A	1,194.42	1,491.72	1,906.03	2,186.56
12"	12.70 - 13.50 13.15 - 13.95 13.50 - 14.30 13.71 - 14.51	SL2-13.50 x length SL2-13.95 x length SL2-14.30 x length SL2-14.51 x length	N/A	1,239.31	1,543.29	1,973.96	2,273.99

¹ Recommended for use on CL200 ACRB

FOR TAPPED SL2 SEE PAGE 2-14.

# OF BOLTS PER CLAMP LENGTH					
O.D. RANGE	8"	10"	12"	16"	20"
4.47 - 10.00	4	6	6	8	10
10.01 - 16.75	-	6	8	10	14

For higher working pressures, clamp length should equal or exceed diameter of pipe. Some sizes and lengths not listed are available on request. Clamps are not to be used for joining plain end pipe.

TO ORDER: Specify catalog number x length of clamp desired.

EXAMPLE: For a two-section clamp for pipe with an O.D. between 6.84 and 7.64 and clamp length of 12" order **SL2 - 7.64 x 12"**