

MACRO HP™

TWO-BOLT WIDE RANGE DUCTILE IRON COUPLING

ROMAC
INDUSTRIES, INC.

MACRO HP™

TWO-BOLT EXTENDED RANGE COUPLING

- New Macro HP Flanged Coupling available for pipe sizes 4" through 8" see catalog page 4-17
- High Performance One-Piece Gasket
- Up To 25% Higher Working Pressure (up to 305 PSI)
- Up To 25% More Deflection (up to 10°)
- Stainless Steel Armors Are Bonded To Gaskets
- Patent Number: 8448993, 9303801 & 10253909

MEETS
AWWA C219



A ROMAC ORIGINAL
2009 - MACRO™



MACRO HP ADVANTAGES

- **DUCTILE IRON**
Long-life ductile iron end-rings and center-ring.
- **WIDE RANGE**
Macro HP fits a wide variety of pipe materials and diameters.
- **SIMPLE INSTALLATION**
Macro HP is a fast stab-fit installation with only two bolts to tighten on 2"-12" sizes and four bolts on 16" sizes. The built-in handle makes the Macro HP simple to carry and maneuver.
- **EASY TO REMOVE**
In the event that the coupling needs to be removed, Macro HP can be quickly removed simply by loosening two bolts.
- **CATHODIC PROTECTION**
The Macro HP can be ordered with an adapter/connection for cathodic protection if desired.
- **ALLOWS DEFLECTION**
When properly installed the Macro HP can accommodate pipe deflection of up to 10 degrees on sizes 2"-12" (5 degrees each end), and up to 8 degrees on 16" (4 degrees each end).
- **MANUFACTURED IN THE U.S.A. BY ROMAC INDUSTRIES, INC.**
Patent Numbers: 8448993, 9303801 & 10253909



Flexible couplings do not provide protection against possible pullout of pipe ends in unrestrained conditions.

MATERIAL SPECIFICATIONS

CASTINGS: All cast components (end rings, center ring, and bolt guides) are ductile iron, meeting or exceeding the requirements of ASTM A536, grade 65-45-12 or 60-40-18. End rings are segmented and joined with a hinge.

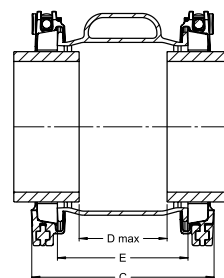
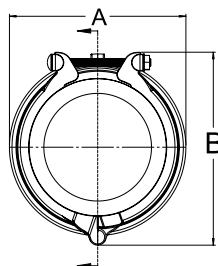
GASKETS: Made from virgin Ethylene Propylene Diene Monomer Rubber (EPDM) compounded for water and sewer service in accordance with ASTM D2000, NSF 61 Certified. NBR - NSF 61 gaskets available upon request.

BOLTS & NUTS: 304 stainless steel, UNC carriage head bolts with heavy hex nuts. Sizes 2" & 3": 1/2-13. Sizes 4" - 16": 5/8-11. 316 stainless steel available upon request. Fasteners provided with anti-galling protection.

ARMOR: Heavy gauge 304 stainless steel bonded to gaskets.

COATINGS: Center Ring is Romacoat fusion bonded epoxy NSF 61 certified. Center Ring can be coated to AWWA C213 upon request. End Rings are E-Coated epoxy.

PRESSURE: When properly installed, the Romac MACRO HP coupling can be used at working pressures up to 305 psi. Contact Romac Engineering for details.



See following page for dimensions.



MACRO HP™

TWO-BOLT WIDE RANGE DUCTILE IRON COUPLING



**NEW
NESTED GASKETS
FOR 2" & 3" SIZES**



INNER RANGE



OUTER RANGE

The 2 inch, 3 inch and 16 inch Macro HP Couplings are factory pre-assembled with gasket for lower range; inner gasket is easily removed to accommodate higher range.

NOM. PIPE SIZE	OVERALL COUPLING RANGE		DIMENSIONS					LIST PRICE	APPROX. WEIGHT (lbs.)
	INNER GASKET RANGE: FACTORY PREASSEMBLED	OUTER GASKET RANGE: REMOVE INNER GASKET	DIM. A WIDTH	DIM. B HEIGHT	DIM. C LENGTH	DIM. D GAP BTWN PIPE ENDS	DIM. E CTR RING LENGTH		
2"	2.12 - 2.90 INNER GASKET 2.12 - 2.55	2.90 - 4.13 OUTER GASKET 2.50 - 2.90	5.80	6.75	6.38	2.38	4.00	\$320.11	9
3"	3.13 - 4.13 INNER GASKET 3.13 - 3.63	4.13 - 7.10 OUTER GASKET 3.63 - 4.13	7.20	8.36	8.38	4.38	6.00	420.01	12

WIDE RANGE GASKETS

MACRO HP Sizes 4 - 12 inch, are preassembled with standard wide range gaskets that accommodate IPS through cast iron pipe. XL sizes cover DI through Oversize Cast Iron pipe diameters.



A/C GASKET INCLUDED

For larger pipe diameters such as some asbestos cement, a separate A/C gasket is included.

NOM. PIPE SIZE	OVERALL COUPLING RANGE		DIMENSIONS					LIST PRICE	APPROX. WEIGHT (lbs.)
	FACTORY PREASSEMBLED	INCLUDED REQUIRES GASKET CHANGE	DIM. A WIDTH	DIM. B HEIGHT	DIM. C LENGTH	DIM. D GAP BTWN PIPE ENDS	DIM. E CTR RING LENGTH		
4"	4.40 - 5.60 WIDE RANGE GASKET 4.40 - 5.05	5.60 - 7.10 A/C GASKET RANGE 4.95 - 5.60	8.96	10.18	11.19	6.19	8.00	\$540.83	28
6"	6.60 - 7.60 WIDE RANGE GASKET 6.60 - 7.15	7.60 - 9.75 A/C GASKET RANGE 7.10 - 7.60	10.96	12.18	11.19	6.19	8.00	713.72	34
8"	8.60 - 9.75 WIDE RANGE GASKET 8.60 - 9.30	9.75 - 11.90 A/C GASKET RANGE 9.10 - 9.75	13.11	14.33	11.19	6.19	8.00	808.22	36
10"	10.70 - 11.90 WIDE RANGE GASKET 10.70 - 11.30	11.90 - 13.80 A/C GASKET RANGE 11.25 - 11.90	15.26	16.48	11.19	6.19	8.00	1,045.45	57
10"XL	11.00 - 12.20 WIDE RANGE GASKET 11.00 - 11.65	12.20 - 14.40 A/C GASKET RANGE 11.55 - 12.20	15.56	16.78	11.19	6.19	8.00	1,117.83	59
12"	12.70 - 13.80 WIDE RANGE GASKET 12.70 - 13.30	13.80 - 15.56 A/C GASKET RANGE 13.15 - 13.80	17.16	18.38	11.19	6.19	8.00	1,230.42	62
12"XL	13.15 - 14.40 WIDE RANGE GASKET 13.15 - 13.80	14.40 - 17.16 A/C GASKET RANGE 13.75 - 14.40	17.76	18.98	11.19	6.19	8.00	1,471.68	64

TO ORDER MACRO HP COUPLING: Determine the O.D. of the pipes to be coupled, and select coupling size which covers the pipe diameters of both pipe ends. Use the high range [in table above] of the overall coupling range to identify which coupling you're ordering.

EXAMPLE: To couple 8" DI and 8" std. steel, order MACRO HP 9.75.

MACRO HP™

FOUR-BOLT WIDE RANGE DUCTILE IRON COUPLING

ROMAC
INDUSTRIES, INC.

**NEW SIZE
FOR APPLICATIONS
ON 16" PIPE**

16 inch Macro HP Couplings have four bolts and are factory pre-assembled with gasket for lower range; inner gasket is easily removed to accommodate higher range.



NOM. PIPE SIZE	OVERALL COUPLING RANGE		DIMENSIONS					LIST PRICE	APPROX. WEIGHT (lbs.)
	INNER GASKET RANGE: FACTORY PREASSEMBLED	OUTER GASKET RANGE: REMOVE INNER GASKET	DIM. A WIDTH	DIM. B HEIGHT	DIM. C LENGTH	DIM. D GAP BTWN PIPE ENDS	DIM. E CTR RING LENGTH		
16"	INNER GASKET 17.10 - 18.19	OUTER GASKET 18.11 - 19.20	25.25	24.80	15.56	7.56	12.00	\$3,370.98	135

OPTIONAL ADD-ONS

MACRO LR (Low-Range) GASKET

The MACRO LR gasket is for smaller pipe diameters such as O.D. Steel. Max. working pressure for MACRO HP with LR gasket is 200 psi. LR Gaskets are not compatible with 10" XL or 12" XL sizes. LR Gaskets are Ethylene Propylene Diene Monomer Rubber (EPDM) compounded for water and sewer service. NBR gaskets available upon request. List prices do not include coupling.



PIPE SIZE	RANGE	CATALOG NUMBER	APPROX. WT. (lbs.)	LIST PRICE EACH
4"	3.50 - 4.30	8R261E04-LRA	1.75	\$79.42
6"	6.00 - 6.30	8R261E06-LRA	2.25	85.45
8"	8.00 - 8.40	8R261E08-LRA	3.00	99.53
10"	10.00 - 10.50	8R261E10-LRA	3.50	111.59
12"	12.00 - 12.50	8R261E12-LRA	3.80	117.62

TO ORDER LR GASKET: Specify which sized LR gasket by indicating the corresponding Catalog Number.

INSULATING BOOT

COMPATIBLE WITH MACRO HP AND 501 COUPLINGS
Romac Insulating boot effectively stops electrolytic action by isolating one pipe from the other. Insulating boots are Ethylene Propylene Diene Monomer (EPDM) compounded for water and sewer service.

PIPE SIZE	O.D. (inches)	LENGTH (inches)	APPROX. WT. (lbs.)	LIST PRICE EACH
4"	4.50	5.50	.75 #	\$53.18
	4.80	5.50		
6"	6.625	12.00	1.10 #	67.78
	6.90	12.00		
8"	8.625	12.00	1.20 #	86.31
	9.05	12.00		
10"	10.75 ¹	12.00	1.75 #	136.63
	11.10	12.00		
12"	12.75 ¹	12.00	2.10 #	154.13
	13.20	12.00		

¹ Special, not common stock gaskets.

NOTE: Insulating Boots are not for use with 10" XL, 12" XL or Macro LR Gaskets. Insulating Boots limit working pressure of coupling to 200 psi.

TO ORDER INSULATING BOOTS: Specify pipe O.D..



ADAPTED CATHODIC PROTECTION

Mechanical Connection for adding cathodic protection such as an anode (Romac does not supply anode). List price does not include coupling. Available in sizes 4" - 12".



ADD-ON LIST PRICE

\$ 311.62

TO ORDER "ADAPTED FOR CATHODIC PROTECTION" ADD-ON:

Add the designation "C" to the end of the coupling order.

EXAMPLE: To order an 8" MACRO Adapted for Cathodic Protection, Order: **MACRO HP 9.75 - C.**