



MACRO HP™ FC EXTENDED RANGE FLANGED COUPLING

MACRO HP™ EXTENDED RANGE FLANGED COUPLING



**MEETS
AWWA C219**

MATERIAL SPECIFICATIONS

CASTINGS: All cast components (end ring, center ring, and bolt cams) are ductile iron, meeting or exceeding the requirements of ASTM A 536, grade 65-45-12 or 60-40-18. See page 10-6 for optional filler flange.

FLANGE: Compatible with flat face flanges with ANSI Class 125 and 150 bolt circles.

END RINGS: 4 – 12 inch End Ring is segmented and joined with an integrated hinge. The gap is spanned by the armor.

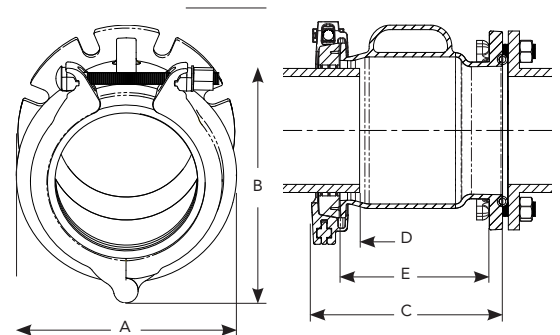
CENTER RING: Cast with integral handle for ease of assembly.

ARMOR: Heavy gauge 304 stainless steel.

GASKETS: Made from virgin Ethylene Propylene Diene Monomer Rubber (EPDM) compounded for water and sewer service in accordance with ASTM D2000, NSF 61 Certified. NBR - NSF 61 gaskets available upon request. Flange gasket is O ring style and is made of Nitrile Butadiene Rubber (NBR) in accordance with ASTM D2000.

BOLTS AND NUTS: Type 304 stainless steel 5/8-11 UNC. All are carriage head bolts with heavy hex nuts. Fasteners provided with anti-galling protection. 316 stainless available on request.

COATINGS: Center Ring is Romacoat fusion bonded epoxy, NSF 61 Certified. Center Ring can be coated to AWWA C213 upon request. End Ring is E-Coated epoxy.



FLANGED COUPLING

NOM. PIPE SIZE	OVERALL COUPLING RANGE		DIMENSIONS					LIST PRICE	APPROX. WEIGHT (lbs.)
	FACTORY PREASSEMBLED	INCLUDED REQUIRES GASKET CHANGE	DIM. A WIDTH	DIM. B HEIGHT	DIM. C LENGTH	DIM. D MIN. PIPE INSERTION	DIM. E CTR RING LENGTH		
4"	WIDE RANGE GASKET 4.40 - 5.05	4.40 - 5.60 A/C GASKET RANGE 4.95 - 5.60	8.96	10.18	11.19	2.50	8.00	\$699.32	28
6"	WIDE RANGE GASKET 6.60 - 7.15	6.60 - 7.60 A/C GASKET RANGE 7.10 - 7.60	10.96	12.18	11.19	2.50	8.00	903.26	36
8"	WIDE RANGE GASKET 8.60 - 9.30	8.60 - 9.75 A/C GASKET RANGE 9.10 - 9.75	13.11	14.33	11.19	2.50	8.00	1,194.64	49
10"	WIDE RANGE GASKET 10.70 - 11.30	10.70 - 11.90 A/C GASKET RANGE 11.25 - 11.90	15.26	16.48	11.19	2.50	8.50	2,064.77	67
12"	WIDE RANGE GASKET 12.70 - 13.30	12.70 - 13.80 A/C GASKET RANGE 13.15 - 13.80	17.64	19.08	10.96	2.50	8.80	2,381.87	81

Flexible couplings do not provide protection against possible pullout of pipe ends in unrestrained conditions.

TO ORDER MACRO HP FC: Determine the O.D. of the pipe to be coupled and select coupling size which covers the pipe diameter. Use the high range [in table above] of the overall coupling range to identify which coupling you're ordering.

EXAMPLE: To couple 8" DI, order **MACRO HP FC 9.75**.