



Transmate

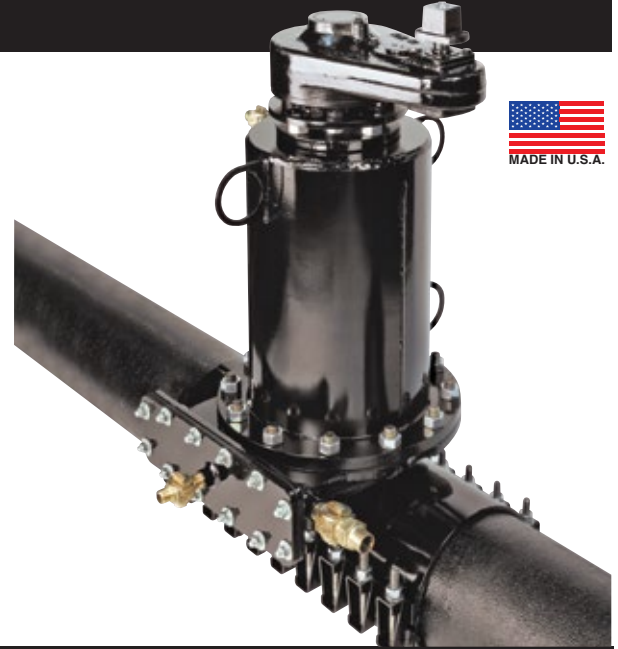
a Division of Romac Industries, Inc.

INSERTAVALVE™

InsertaValve™

Valve insertion, simplified

- 10"– 12" installations in cast iron, ductile iron, A/C, PVC C-900 and steel pipe
- No Loss of Pressure
- Minimal Water Loss
- Completion time is less than 2 hours
- Much Faster Than Traditional Line Stopping And Cut-ins
- Horizontal or Vertical Installations



INSERTA VALVE™ SLEEVE

MATERIAL SPECIFICATIONS

INTENDED USE: Provides attachment to pipe for drilling and final assembly of the InsertaValve™ Water Control Valve. May be used on cast iron, ductile iron, asbestos cement and C900 PVC pipe.

GENERAL: The fabricated sleeve will assure a 360 degree seal around the pipe under working pressures up to 150 psi. It will accommodate the equipment and fixtures necessary to drill the pipe and install the InsertaValve™ valve assembly without any interruption in water service.

SLEEVE: ASTM A36 steel.

FLANGE: A special flange will mate with the InsertaValve™ installation equipment and valve assembly.

NECK: The precision manufacturing tolerances of the neck will assure proper alignment, and support, of the InsertaValve™ valve assembly. The neck will incorporate a slide gate body that will provide a connecting flange and sealing surface for the slide gate housing. The slide gate body will also provide a sealing surface for the slide gate disk o-ring.

BOLTS AND NUTS: High strength low alloy steel bolts and nuts meeting AWWA standard C-111. Type 304 stainless steel bolts with Xylan coated nuts to prevent galling, are optional.

LUGS: Sleeve sidebar lugs will properly align the sleeve halves during installation, provide a bolting surface, and assure a 360 degree seal. The lugs will prevent excessive stress on the pipe, and minimize distortion of soft (PVC) pipe.

MAT GASKETS: Made of Styrene Butadiene Rubber (SBR) compounded for potable water service in accordance with ASTM D2000 3 BA620. The gaskets provide a positive 360 degree seal on the pipe and assure a tight, durable, and resilient seal.

COATING: The sleeve is lined and coated with Romacoat fusion bonded epoxy, NSF 61 certified.

ARMORS: Heavy gauge type 304 stainless steel armor plates will bridge the gap between the sleeve halves.

INSERTA VALVE™ ASSEMBLY

MATERIAL SPECIFICATIONS

GENERAL: Designed to be inserted into the InsertaValve™ Sleeve after the drilling procedure is performed, the Valve Assembly shall perform as a water control device giving an effective shutoff of the flow of water. The valve will be installed in the open position, under pressure and under flow conditions without any interruption of water service. The InsertaValve™ shall give a full flow waterway after installation.

PLUG: Constructed of urethane rubber, with a durometer of 60 Shore A. The plug shall seal on the on the inside diameter of the pipe and inside diameter to the drilled hole.

VALVE STEM AND STEM NUT: Manufactured of high strength bronze suitable for valve stems and nuts.

GEARBOX: The gearbox (inline style for vertical installations, or a 90° style for horizontal installations) will provide the force necessary to compress the plug to shut off the flow of water in the pipeline.

FLANGE GASKET: Made of SBR rubber, compounded for potable water service in accordance with ASTM D2000 3 BA715, with a durometer of 70 Shore A. The gasket acts as the sealing interface between the valve flange and the sleeve flange.

BOLTS AND NUTS: Alloy steel, zinc plated for corrosion protection. Type 304 stainless steel bolts, nuts and washers are optional. Stainless steel nuts are Xylan coated to prevent galling.

The InsertaValve™ requires a minimum depth of bury from the topside of the pipe of 40" in vertical installations. For the horizontal installations, a 24" bury depth is recommended. The physical height of the sleeve and valve assembly is 35" off the top of the pipe.

The InsertaValve™ requires approximately 215 turns to completely open and close the valve.

INSERTAVALVE™**Transmate**

a Division of Romac Industries, Inc.

InsertaValve™

Valve Insertion, Simplified

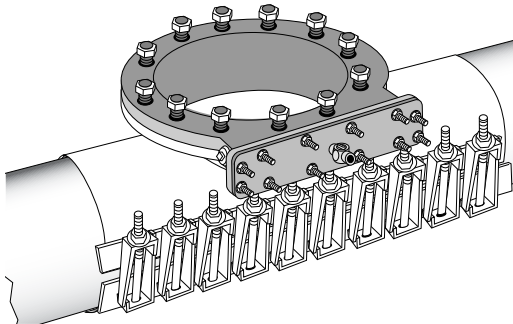
For more information on the InsertaValve™ Machine, please contact your regional Romac Customer Service at 1-800-426-9341

Note: This equipment is an add-on package to the QuikValve™ Base Machine (360-00) and requires the use of a hydraulic power supply.

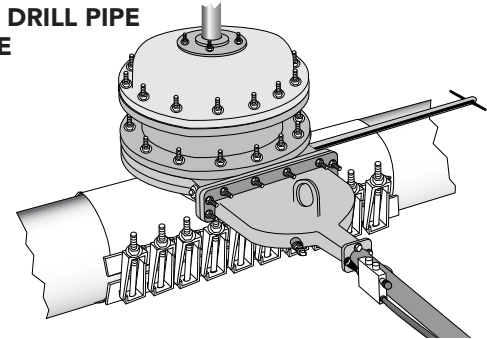


EASY INSTALLATION

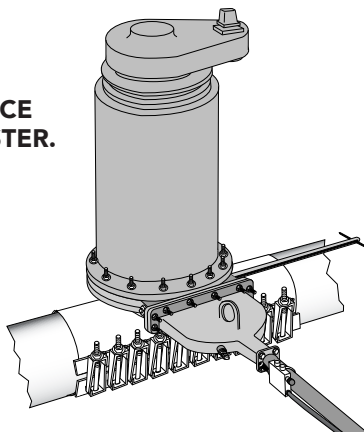
- 1** INSTALL THE INSERTAVALVE™ SLEEVE ON TO THE PIPE



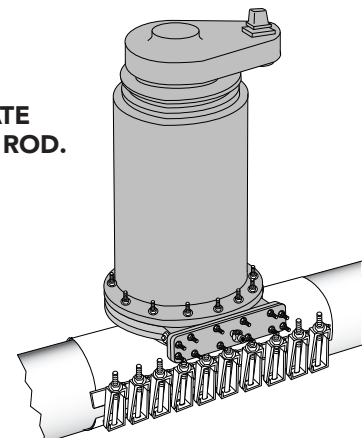
- 2** MOUNT THE SLIDE GATE ASSEMBLY & DRILLING MACHINE. DRILL PIPE AND CLOSE THE SLIDE GATE.



- 3** REMOVE DRILLING MACHINE & REPLACE WITH VALVE CANISTER.



- 4** OPEN SLIDE GATE. REMOVE SLIDE GATE ASSEMBLY & SEAL ROD.



Transmate



a Division of Romac Industries, Inc.

INSERTAVALVE™

InsertaValve™

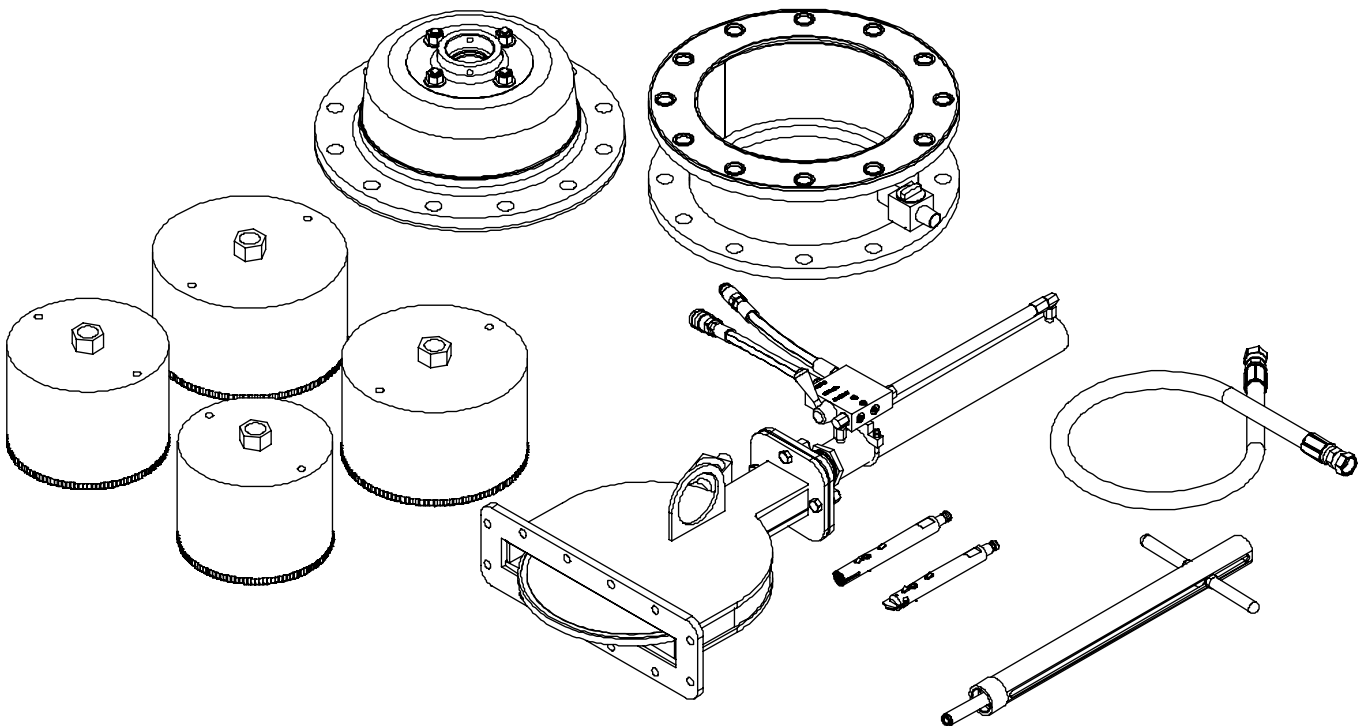
Valve Insertion, Simplified

ITEM NUMBER	DESCRIPTION	LIST PRICE
358-00	InsertaValve™ Equipment for 10 & 12-inch Valve Insertion	\$25,067.49

THE FOLLOWING ACCESSORIES ARE INCLUDED:

- Slide Gate (Hydraulically Powered)
- Seal Rod
- Drilling Machine Adapter Bell For I.V.S. (fits QuikValve™ drilling machine)
- (4) Holesaws that fit QuikValve™
- (4) Holesaws that fit TapMate™ Drilling Machine
- Machine Spacer
- By-Pass Hose
- Shaft Nose - for DI, CI and Steel
- PVC Pilot - for PVC Pipe
- Assorted Fasteners and Gaskets
- Operations Manual

Note: This equipment is an add-on package to the QuikValve™ Base Machine (360-00) and requires the use of a hydraulic power supply.



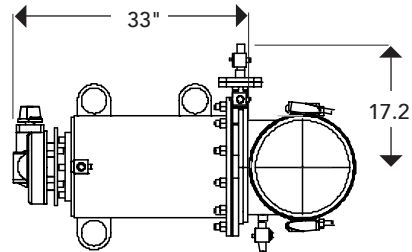
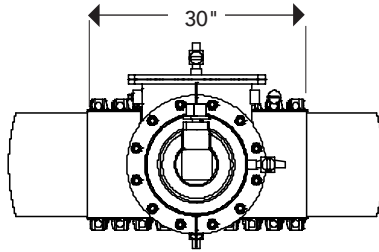
INSERTAVALVE™

Transmate

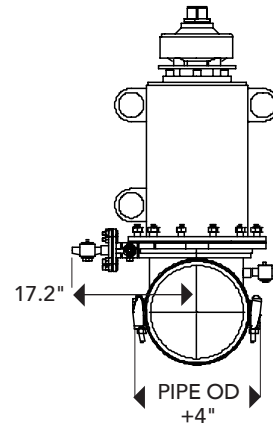
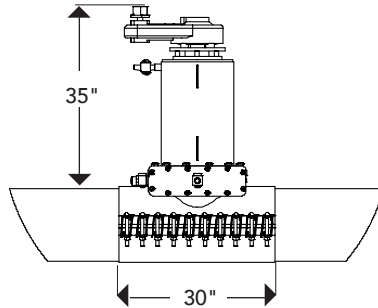
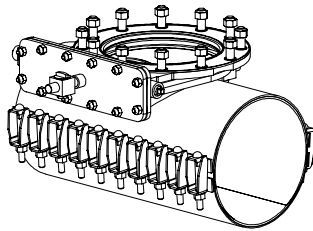
a Division of Romac Industries, Inc.



HORIZONTAL INSTALLATIONS



VERTICAL INSTALLATIONS



ITEM NUMBER	DESCRIPTION	LIST PRICE
SLEEVES with alloy bolts & nuts		
311-1095010	IVS-10.95 (10.75 - 10.95)	\$5,428.88
311-1125010	IVS-11.25 (10.85 - 11.25)	5,428.88
10" 311-1145010	IVS-11.45 (11.05 - 11.45)	5,428.88
311-1180010	IVS-11.80 (11.40 - 11.80)	5,428.88
311-1220010	IVS-12.20 (11.80 - 12.20)	5,428.88
311-1260010	IVS-12.60 (12.20 - 12.60)	5,428.88
311-1295010	IVS-12.95 (12.75 - 12.95)	5,428.88
311-1320010	IVS-13.20 (12.90 - 13.20)	5,428.88
12" 311-1350010	IVS-13.50 (13.10 - 13.50)	5,428.88
311-1380010	IVS-13.80 (13.40 - 13.80)	5,428.88
311-1410010	IVS-14.10 (13.70 - 14.10)	5,428.88
311-1440010	IVS-14.40 (14.00 - 14.40)	5,428.88
311-1460010	IVS-14.60 (14.20 - 14.60)	5,428.88
311-1470010	IVS-14.70 (14.30 - 14.70)	5,428.88

ITEM NUMBER	DESCRIPTION	LIST PRICE
SLEEVES with 304 S.S. bolts & nuts		
311-1095011	IVS-10.95 (10.75 - 10.95)	\$6,141.92
10" 311-1125011	IVS-11.25 (10.85 - 11.25)	6,141.92
311-1145011	IVS-11.45 (11.05 - 11.45)	6,141.92
311-1180011	IVS-11.80 (11.40 - 11.80)	6,141.92
311-1220011	IVS-12.20 (11.80 - 12.20)	6,141.92
311-1260011	IVS-12.60 (12.20 - 12.60)	6,141.92
311-1295011	IVS-12.95 (12.75 - 12.95)	6,141.92
311-1320011	IVS-13.20 (12.90 - 13.20)	6,141.92
12" 311-1350011	IVS-13.50 (13.10 - 13.50)	6,141.92
311-1380011	IVS-13.80 (13.40 - 13.80)	6,141.92
311-1260011	IVS-14.10 (13.70 - 14.10)	6,141.92
311-1440011	IVS-14.40 (14.00 - 14.40)	6,141.92
311-1460011	IVS-14.60 (14.20 - 14.60)	6,141.92
311-1470011	IVS-14.70 (14.30 - 14.70)	6,141.92

Note: Sleeve and Canister dimensions are the same for 10 inch and 12 inch installations

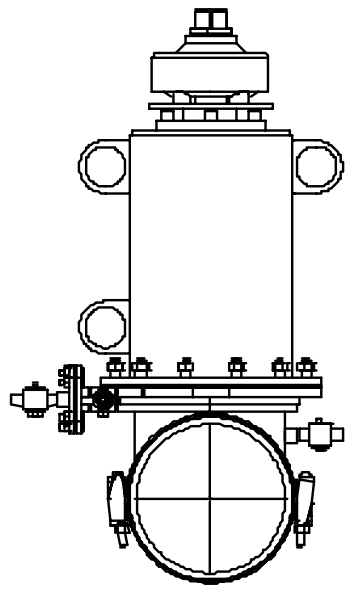


INSERTAVALVE™

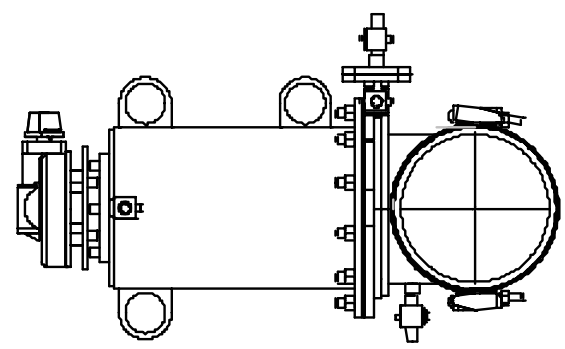
VALVE CANISTERS (PLUG INCLUDED)



VERTICAL



HORIZONTAL



	ITEM NUMBER	DESCRIPTION	LIST PRICE
10"	358-01-0938	9 3/8" Left Open, Alloy B&N	\$14,408.33
	358-01-0938R	9 3/8" Right Open, Alloy B&N	14,408.33
	358-01-0938-SS	9 3/8" Left Open, 304 SS B&N	14,930.90
	358-01-0938R-SS	9 3/8" Right Open, 304 SS B&N	14,930.90
10"	358-01-0975	9 3/4" Left Open, Alloy B&N	14,408.33
	358-01-0975R	9 3/4" Right Open, Alloy B&N	14,408.33
	358-01-0975-SS	9 3/4" Left Open, 304 SS B&N	14,930.90
	358-01-0975R-SS	9 3/4" Right Open, 304 SS B&N	14,930.90
12"	358-01-1138	11 3/8" Left Open, Alloy B&N	14,408.33
	358-01-1138R	11 3/8" Right Open, Alloy B&N	14,408.33
	358-01-1138-SS	11 3/8" Left Open, 304 SS B&N	14,930.90
	358-01-1138R-SS	11 3/8" Right Open, 304 SS B&N	14,930.90
12"	358-01-1175	11 3/4" Left Open, Alloy B&N	14,408.33
	358-01-1175R	11 3/4" Right Open, Alloy B&N	14,408.33
	358-01-1175-SS	11 3/4" Left Open, 304 SS B&N	14,930.90
	358-01-1175R-SS	11 3/4" Right Open, 304 SS B&N	14,930.90

	ITEM NUMBER	DESCRIPTION	LIST PRICE
10"	358-01-0938-90GB	9 3/8" Left Open, Alloy B&N	\$14,408.33
	358-01-0938R-90GB	9 3/8" Right Open, Alloy B&N	14,408.33
	358-01-0938-90GB-SS	9 3/8" Left Open, 304 SS B&N	14,930.90
	358-01-0938R-90GB-SS	9 3/8" Right Open, 304 SS B&N	14,930.90
10"	358-01-0975-90GB	9 3/4" Left Open, Alloy B&N	14,408.33
	358-01-0975R-90GB	9 3/4" Right Open, Alloy B&N	14,408.33
	358-01-0975-90GB-SS	9 3/4" Left Open, 304 SS B&N	14,930.90
	358-01-0975R-90GB-SS	9 3/4" Right Open, 304 SS B&N	14,930.90
12"	358-01-1138-90GB	11 3/8" Left Open, Alloy B&N	14,408.33
	358-01-1138R-90GB	11 3/8" Right Open, Alloy B&N	14,408.33
	358-01-1138-90GB-SS	11 3/8" Left Open, 304 SS B&N	14,930.90
	358-01-1138R-90GB-SS	11 3/8" Right Open, 304 SS B&N	14,930.90
12"	358-01-1175-90GB	11 3/4" Left Open, Alloy B&N	14,408.33
	358-01-1175R-90GB	11 3/4" Right Open, Alloy B&N	14,408.33
	358-01-1175-90GB-SS	11 3/4" Left Open, 304 SS B&N	14,930.90
	358-01-1175R-90GB-SS	11 3/4" Right Open, 304 SS B&N	14,930.90

INSERTAVALVE™

SLEEVE & PLUG CHART



SLEEVE CHART SLEEVE SPECIFIED BY LARGE OD

SLEEVE SIZE	PIPE AND CLASS	PART NUMBER
10.75 - 10.95	PVC 10" (10.75) ASTM D2241CL 100,125,160,200 Steel 10 (10.75) Sch. 40, 80	311-1095010
10.85 - 11.25	DI 10" (11.10) 50 - 56 CI 10" (11.10) 50 CC & PC; 100 CC & PC; 150 CC & PIT; 200 CC & PIT; 250 CC; A, B. PVC C-900 10" (11.10); DR14 (PC305), DR18 (PC235), DR25 (PC165)	311-1125010
11.05 - 11.45	DI (11.10) 50 - 56 CI (11.10,11.40) PVC C-900 (11.10); DR14 (PC305), DR18 (PC235), DR25 (PC165) SIMPLEX (11.43); AC 150, AC 100 J-M (11.37)	311-1145010
11.40 - 11.80	CI 250 PIT (11.40), C (11.40), D (11.40) E, F (11.60) AC 100 CERTAIN-TEED (11.46), SIMPLEX (11.43)	311-1180010
11.80 - 12.20	CI G, H (11.84) AC 150 J-M (11.92) SIMPLEX (11.95); AC 200 J-M (11.92) CERTAIN-TEED (11.88)	311-1220010
12.20 - 12.60	AC 200 SIMPLEX (12.45)	Non-stocked item, please call for special quote
12.75 - 12.95	PVC 12" (12.75) ASTM D2241CL 100, 125, 160, 200 Steel 12" (12.75) Sch. 40, 80	311-1295010
12.90 - 13.20	DI 12" (13.20) 50 - 56 CI 12" (13.20) 50 CC & PC; 100 CC & PC; 150 CC & PIT; 200 CC & PIT; 250 CC; A, B PVC C-900 12" (13.20); DR14 (PC305), DR18 (PC235), DR25 (PC165)	311-1320010
13.10 - 13.50	DI 12" (13.20) 50 - 56 CI 12" (13.20) 50 CC & PC; 100 CC & PC; 150 CC & PIT; 200 CC & PIT; 250 CC; A, B; A,B;CI (13.50) 250 PIT, C, D PVC C-900 12" (13.20); DR14 (PC305), DR18 (PC235), DR25 (PC165) AC 100 J-M (13.49)	311-1350010
13.40 - 13.80	CI (13.50) 250 PIT, C, D, (13.76) E, F AC 100 J-M (13.49) CERTAIN-TEED (13.70) SIMPLEX (13.61)	311-1380010
13.70 - 14.10	CI G, H (14.08)	311-1410010
14.00 - 14.40	AC 150 J-M (14.18) CERTAIN-TEED (14.11) SIMPLEX (14.21) AC 200 J-M (14.18) CERTAIN-TEED (14.11)	311-1440010
14.40 - 14.80	AC 200 SIMPLEX (14.72)	Non-stocked item, please call for special quote

PLUG CHART

PLUG SIZE	PIPE AND CLASS	PART NUMBER
10"	NOM. DIA. C900 PVC: DR14 (PC305) AC: JM CL 200, CERTAIN-TEED CL 200, SIMPLEX CL 200 STEEL: SCH. 80	358-01-0938
	9 3/8" DI: CL 50-56 CI: ALL TYPES C-900 PVC: DR18 (PC235), DR25 (PC165) IPS PVC (ASTM D2241): CL 100, 125, 160, 200 AC: 100, 150 STEEL: SCH. 40	358-01-0975
12"	11 3/8" C900 PVC: DR14 (PC305) IPS PVC (ASTM D2241): CL 200 AC: JM CL 100, 200, CERTAIN-TEED CL 200, SIMPLEX CL 200 STEEL: SCH. 80	358-01-1138
	11 3/4" DI: CL 50-56 CI: ALL TYPES C900 PVC: DR18 (PC235), DR25 (PC165) IPS PVC: (ASTM D2241) CL 100, 125, 160, 200 AC: 100, 150 STEEL: SCH. 40	358-01-1175

QV-12

Manufactured with Domestic and Import material. For Domestic requirements please contact our Quotations Department.

JANUARY 10, 2022