

# FTS425 FABRICATED STEEL TAPPING SLEEVE



## MATERIAL SPECIFICATIONS

**BODY AND OUTLET NOZZLE:** Carbon steel, A-36 or equal.

**BOLTS AND NUTS:** Trackhead bolts, heavy hex nuts, UNC rolled thread, high strength, low alloy, steel per AWWA C111. Optional stainless steel, type 304.

**GASKETS:** SBR per ASTM D2000 MBA 710, compounded for water and sewer service use. Other compounds available on request.

**PAINT:** Romac shopcoat for corrosion protection in transit. Optional Romacoat fusion bonded epoxy, NSF 61 certified. Other coatings available. Romac packages sleeves to protect any special coatings.

**FLANGE:** AWWA Class "D" plate flange, ANSI Class 150 drilling, proper recessing for tapping valves. Will accommodate tapping flanges per MSS SP-60.

**USE:** FTS425 can be used in tapping applications where the integrity of the pipe is a concern. The MJ style end gaskets and side gaskets create a 360 degree encompassing seal around the pipe. Custom configurations are available.

Meets requirements of MSS SP-124 and AWWA C223.



NSF61 certified upon request.

MEETS  
AWWA C223

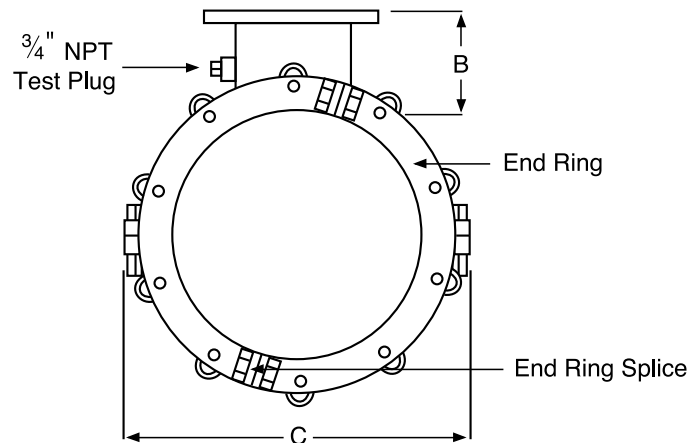
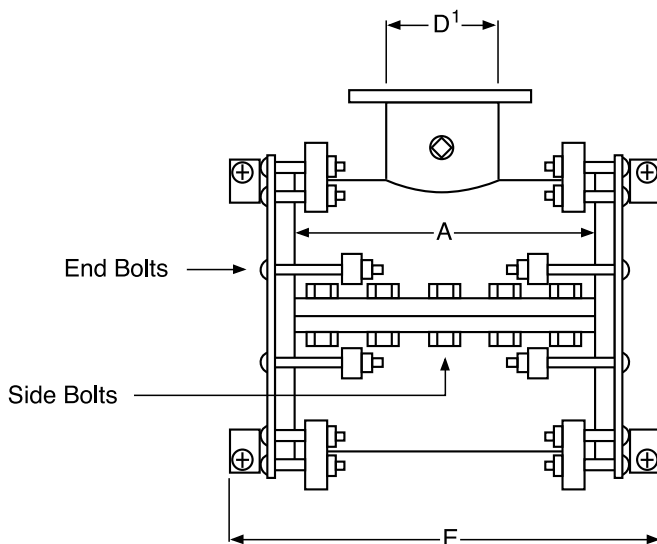
The Romac steel sleeve with side and end gasket seals provides extra protection on lines subject to excessive beam loads.

### Fabricated to special order only.

- Exact O.D. of pipe required
- No range provided
- Price on application

ALSO AVAILABLE WITH THREADED  
OUTLET MODEL FTS425T

Contact Romac Engineering for high pressure and larger than 24" pipe applications.



<sup>1</sup> For D dimension: 4" - 12" flanges will accommodate tapping flanges per MSS SP-60.



# FTS425 FABRICATED STEEL TAPPING SLEEVE

NOMINAL PIPE SIZE	PIPE O.D.	FLANGE SIZE	A	B	C	E	SIDE BOLTS QTY: SIZE	END BOLTS QTY: SIZE	APPROX. WEIGHT (lbs.)
12"	Ductile Iron 13.20	4"	15.3	6.00	18.38	22.36	8: 1"	16: 5/8"	217#
		6" & 8"	19.0	6.00	18.38	26.13	10: 1"	16: 5/8"	261#
		10" & 12"	22.8	6.00	18.38	29.90	12: 1"	16: 5/8"	325#
	Cast Iron 13.50	4"	15.3	6.00	18.68	22.36	8: 1"	16: 5/8"	220#
		6" & 8"	19.0	6.00	18.68	26.13	10: 1"	16: 5/8"	264#
		10" & 12"	22.8	6.00	18.68	29.90	12: 1"	16: 5/8"	329#
	A/C 13.55	4"	15.3	6.00	18.73	22.36	8: 1"	16: 5/8"	221#
		6" & 8"	19.0	6.00	18.73	26.13	10: 1"	16: 5/8"	264#
		10" & 12"	22.8	6.00	18.73	29.90	12: 1"	16: 5/8"	329#
14"	Ductile Iron 15.30	4"	15.3	6.00	20.48	22.36	8: 1"	20: 5/8"	241#
		6" & 8"	19.0	6.00	20.48	26.13	10: 1"	20: 5/8"	288#
		10" & 12"	22.8	6.00	20.48	29.90	12: 1"	20: 5/8"	355#
	Cast Iron 15.55	4"	15.3	6.00	20.83	22.36	8: 1"	20: 5/8"	244#
		6" & 8"	19.0	6.00	20.83	26.13	10: 1"	20: 5/8"	291#
		10" & 12"	22.8	6.00	20.83	29.90	12: 1"	20: 5/8"	358#
	A/C 15.65	4"	15.3	6.00	20.73	22.36	8: 1"	20: 5/8"	244#
		6" & 8"	19.0	6.00	20.73	26.13	10: 1"	20: 5/8"	292#
		10" & 12"	22.8	6.00	20.73	29.90	12: 1"	20: 5/8"	360#
16"	Ductile Iron 17.40	4"	15.3	6.00	22.58	22.36	8: 1"	20: 5/8"	261#
		6" & 8"	19.0	6.00	22.58	26.13	10: 1"	20: 5/8"	311#
		10" & 12"	22.8	6.00	22.58	29.90	12: 1"	20: 5/8"	388#
	A/C 17.55	4"	15.3	6.00	22.98	22.36	8: 1"	20: 5/8"	265#
		6" & 8"	19.0	6.00	22.98	26.13	10: 1"	20: 5/8"	316#
		10" & 12"	22.8	6.00	22.98	29.90	12: 1"	20: 5/8"	387#
Cast Iron 17.80	4"	15.3	6.00	22.73	22.36	8: 1"	20: 5/8"	263#	
	6" & 8"	19.0	6.00	22.73	26.13	10: 1"	20: 5/8"	313#	
	10" & 12"	22.8	6.00	22.73	29.90	12: 1"	20: 5/8"	384#	
18"	Ductile Iron 19.50	4" & 6"	18.3	6.00	24.68	25.42	8: 1 1/8"	24: 5/8"	338#
		8", 10" & 12"	23.0	6.00	24.68	30.10	10: 1 1/8"	24: 5/8"	430#
		Cast Iron 19.92	4" & 6"	18.3	6.00	25.10	25.42	8: 1 1/8"	16: 5/8"
	8", 10" & 12"		23.0	6.00	25.10	30.10	10: 1 1/8"	24: 5/8"	435#
	A/C 20.50		4" & 6"	18.3	6.00	25.68	25.42	8: 1 1/8"	24: 5/8"
		8", 10" & 12"	23.0	6.00	25.68	30.10	10: 1 1/8"	24: 5/8"	443#
20"		Ductile Iron 21.60	4" & 6"	18.4	6.00	27.78	25.49	8: 1 1/4"	24: 5/8"
	8", 10" & 12"		23.0	6.00	27.78	30.10	10: 1 1/4"	24: 5/8"	500#
	Cast Iron 22.06		4" & 6"	18.4	6.00	28.24	25.49	8: 1 1/4"	24: 5/8"
		8", 10" & 12"	23.0	6.00	28.24	30.10	10: 1 1/4"	24: 5/8"	505#
		A/C 22.70	4" & 6"	18.4	6.00	28.88	25.49	8: 1 1/4"	24: 5/8"
	8", 10" & 12"		23.0	6.00	28.88	30.10	10: 1 1/4"	24: 5/8"	515#
24"	Ductile Iron 25.80		4" & 6"	18.4	6.00	31.98	25.49	8: 1 1/4"	28: 5/8"
		8", 10" & 12"	23.0	6.00	31.98	30.10	10: 1 1/4"	28: 5/8"	558#
		Cast Iron 26.32	4" & 6"	18.4	6.00	32.50	25.49	8: 1 1/4"	28: 5/8"
	8", 10" & 12"		23.0	6.00	32.50	30.10	10: 1 1/4"	28: 5/8"	565#
	A/C 27.15		4" & 6"	18.4	6.00	33.33	25.49	8: 1 1/4"	28: 5/8"
		8", 10" & 12"	23.0	6.00	33.33	30.10	10: 1 1/4"	28: 5/8"	576#

All prices POA.

Sizes not listed are available on request.

