

# FTS419 FABRICATED STEEL TAPPING SLEEVE



## MATERIAL SPECIFICATIONS

**BODY AND OUTLET NOZZLE:** Carbon steel, A-36 or equal. Also available in type 304SS, STS419. Also available in threaded outlet.

**BOLTS AND NUTS:** Trackhead bolts, heavy hex nuts, 5/8" UNC rolled thread, high strength, low alloy, steel per AWWA C111. Optional stainless steel, type 304.

**GASKETS:** SBR per ASTM D2000 MBA 710, compounded for water and sewer service use. Other compounds available on request.

**TEST PLUG:** 3/4" NPT type 304 stainless steel test plug.

**COATING:** Romacoat fusion bonded epoxy NSF 61 certified. Other coatings available. Romac packages sleeves to protect coating.

**FLANGE:** AWWA Class "D" plate flange, ANSI Class 150 drilling, proper recessing for tapping valves. Will accommodate tapping flanges per MSS SP-60.

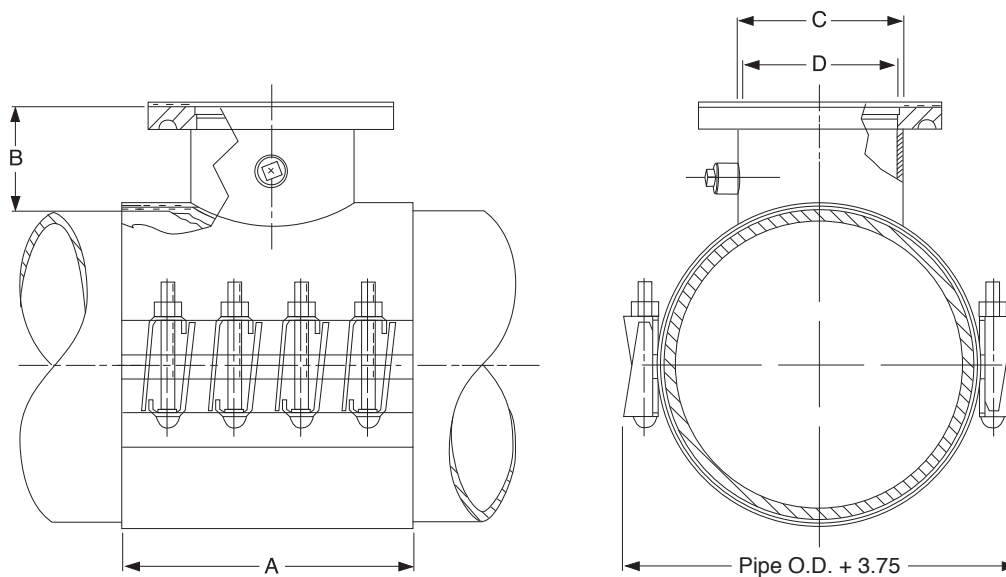
**USE:** Recommended for PVC, steel, D.I., copper pipe.

Meets requirements of MSS SP-124 and AWWA C223



NSF61 certified upon request.

MEETS  
AWWA C223



FLANGE SIZE	A	B	C	D	BOLTS QTY: SIZE
3"	9"	5.18"	4.03"	3.06 - 3.54	6: 5/8" x 6"
4"	9"	5.18"	5.03"	4.26 - 4.73	6: 5/8" x 6"
6"	12"	5.18"	7.03"	6.42 - 6.73	8: 5/8" x 6"
8"	15"	5.18"	9.03"	8.42 - 8.73	10: 5/8" x 6"
10"	18"	5.50"	11.03"	10.73	12: 5/8" x 6"
12"	24"	5.75"	13.03"	12.73	16: 5/8" x 6"

**TO ORDER:** Specify catalog number by the desired O.D. and flange size. Add S.S. for optional 304 stainless steel bolts and nuts. Other sizes and outlets are available upon request.



# FTS419 FABRICATED STEEL TAPPING SLEEVE

NOMINAL PIPE SIZE	SLEEVE O.D. RANGE (inches)	CATALOG NUMBER			LIST PRICE EACH		APPROX. WEIGHT (lbs.)
		SLEEVE #	BY	BRANCH SIZE	W/ ALLOY BOLTS	W/ 304 SS BOLTS & NUTS	
4"	4.00 4.13	FTS419-4.00 FTS419-4.13	×	3" *	\$1,198.28	\$1,318.41	28#
	4.50 - 4.80	FTS419-4.80	×	3" * 4" *	1,198.28 1,198.28	1,320.54 1,320.54	34# 34#
5"	5.13 5.56	FTS419-5.13 FTS419-5.56	×	3" * 4" *	1,198.28 1,198.28	1,320.54 1,320.54	34# 35#
	6.00 6.13	FTS419-6.00 FTS419-6.13	×	3" 4"	1,235.26 1,235.26	1,357.52 1,357.52	34# 36#
6"	6.63 - 6.90	FTS419-6.90	×	3" 4" 6" *	1,235.26 1,235.26 1,377.44	1,357.52 1,357.52 1,528.89	34# 36# 53#
	8.00 8.13	FTS419-8.00 FTS419-8.13	×	3" 4" 6"	1,328.20 1,328.20 1,429.59	1,450.48 1,450.48 1,581.07	34# 38# 55#
	8.63 - 9.05	FTS419-9.05	×	3" 4" 6" 8" *	1,328.20 1,328.20 1,429.59 1,747.20	1,450.48 1,450.48 1,581.07 1,927.72	38# 40# 56# 77#
10"	10.00	FTS419-10.00	×	3" 4" 6" 8"	1,331.40 1,331.40 1,477.22 1,822.19	1,453.69 1,453.69 1,628.69 2,002.73	38# 41# 58# 79#
	10.75 - 11.10	FTS419-11.10	×	3" 4" 6" 8" 10" *	1,331.40 1,331.40 1,477.22 1,822.19 2,424.29	1,453.69 1,453.69 1,628.69 2,002.73 2,633.95	41# 43# 60# 81# 108#
	12.75 - 13.20	FTS419-13.20	×	3" 4" 6" 8" 10" 12" *	1,412.00 1,412.00 1,608.47 1,943.47 2,560.99 3,042.80	1,534.31 1,534.31 1,759.91 2,124.01 2,770.59 3,310.65	44# 46# 64# 85# 111# 129#
	14.00 15.30	FTS419-14.00 FTS419-15.30	×	3" 4" 6" 8" 10" 12"	1,555.59 1,561.99 1,724.89 2,085.36 2,961.14 3,331.60	1,860.80 1,860.80 1,818.55 2,562.22 3,476.54 3,864.95	47# 49# 67# 88# 114# 136#
	16.00 17.40	FTS419-16.00 FTS419-17.40	×	3" 4" 6" 8" 10" 12"	1,624.52 1,624.52 1,820.83 2,000.65 3,065.98 3,516.76	1,926.41 1,926.41 2,130.90 2,651.16 3,587.83 4,059.10	50# 52# 71# 92# 117# 144#
18"	18.00 19.50	FTS419-18.00 FTS419-19.50	×	3" 4" 6" 8" 10" 12"	1,669.10 1,669.10 1,876.67 2,280.50 3,193.24 3,570.34	1,973.14 1,973.14 2,190.79 2,766.98 3,719.89 4,115.31	56# 57# 76# 96# 120# 160#
	20.00 21.60	FTS419-20.00 FTS419-21.60	×	3" 4" 6" 8" 10" 12"	1,713.70 1,713.70 1,932.45 2,465.78 3,320.41 3,619.28	2,019.94 2,019.94 2,249.30 2,882.81 3,853.24 4,171.44	56# 58# 78# 100# 123# 160#
	24.00 25.80	FTS419-24.00 FTS419-25.80	×	3" 4" 6" 8" 10" 12"	1,968.10 1,968.10 2,218.11 2,874.14 3,855.97 4,114.78	2,286.69 2,286.69 2,548.80 3,311.05 4,414.86 4,686.19	63# 64# 86# 107# 130# 176#

\* Size-on-size taps require shell cutters that are 1/2" smaller than the nominal size.