

STYLE FCA501 FLANGED COUPLING ADAPTER



MATERIAL SPECIFICATIONS

FLANGED BODY: Ductile iron per ASTM A536, Grade 65-45-12. Flange meets the dimensional requirements of ANSI Class 125 and 150 bolt circles. Yellow shopcoat. Other flange coatings available on request. See page 10-6 for optional filler flange.

END RING: Ductile iron per ASTM A536, Grade 65-45-12. Color coded RED for O.D. and Std. Stl., BLACK for cast iron and YELLOW for A/C.

GASKETS: SBR per ASTM D2000 MBA 710, compounded for water and sewer service. Flange O-ring gasket is NBR rubber. Other compounds available on request.

BOLTS AND NUTS: Trackhead bolts, heavy hex nuts, UNC high strength, low alloy, corrosion-resistant steel per AWWA C111. The 10" and 12" flange bolts and nuts are mild steel, electro-galvanized with a hex head. Other materials or special coatings available on request.

ANCHOR PINS: AISI 12L14 low carbon steel, minimum of 60,000 psi yield strength. Rated for 175 psi. Stainless steel pins (316 only) are available on request. Stainless steel pins require double the quantity. Anchor pins are for use on cast iron, ductile iron and steel pipe only.

OPTIONS: For other options and specifications, see page 3-25 & 3-26. For 14" and above, see FC400 on Page 4-5.

FCA501
SHOWN
WITHOUT
FLANGE
BOLTS

MEETS
AWWA C219



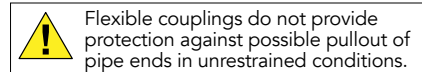
NSF61 certified
upon request.



NOM. PIPE SIZE	COLOR CODE	GASKET RANGE	APPROXIMATE USE	CATALOG NUMBER	LIST PRICE				ADD-ON EPOXY L&C	APPROX. WEIGHT (lbs.)
					COMPLETE	COMPLETE W/ ANCHOR PINS ^③	COMPLETE W/ 304 SS BOLTS & NUTS	COMPLETE W/ 316 SS BOLTS & NUTS		
3"	RED	3.00 - 3.29	Copper, O.D. Steel	FCA501 - 3.29	\$354.60	\$480.90	\$405.89	\$476.51	\$56.14	16 #
		3.30 - 3.51	Std. Stl & PVC	FCA501 - 3.51						
		3.50 - 4.00	Std. Stl, CI/DI & PVC	FCA501 - 4.00						
4" x 3" FLANGE	RED	3.80 - 4.05	O.D. Stl. C.I. & O.D. Stl.	FCA501 - 4.05-3	441.89	N/A	575.22	614.63	70.20	19 #
		4.06 - 4.31	Riv. Stl.	FCA501 - 4.31-3						
		4.50 - 4.70	Std. Stl. & PVC	FCA501 - 4.70-3						
		4.50 - 4.81	Std. Stl., D.I. & PVC	FCA501 - 4.81-3						
	BLACK	4.80 - 5.00	Cast Iron & PVC	FCA501 - 5.00-3						
		4.74 - 5.10	C.I. & A/C M.E.	FCA501 - 5.10-3						
4"	RED	3.80 - 4.05	O.D.	FCA501 - 4.05	467.22	599.13	587.89	675.49	70.20	18 #
		4.06 - 4.31	Riv. Stl.	FCA501 - 4.31						
		4.21 - 4.49	A/C	FCA501 - 4.49						
		4.50 - 4.70	Std. Stl. & PVC	FCA501 - 4.70						
	BLACK	4.50 - 4.81	Std. Stl., D.I. & PVC	FCA501 - 4.81						
		4.80 - 5.00	Cast Iron & PVC	FCA501 - 5.00						
6"	RED	4.74 - 5.10	C.I. & A/C M.E.	FCA501 - 5.10	596.00	742.24	784.73	878.02	95.04	28 #
		5.11 - 5.30	A/C R.B.	FCA501 - 5.30						
		5.11 - 5.40	A/C R.B. CL. 200	FCA501 - 5.40						
		5.80 - 6.10	O.D.	FCA501 - 6.10						
	BLACK	6.05 - 6.30	Riv. Stl.	FCA501 - 6.30						
		6.18 - 6.46	PVC Sewer	FCA501 - 6.46						
8"	RED	6.55 - 6.76	Std. Stl. & PVC	FCA501 - 6.76	819.21	952.41	1,007.96	1,101.25	114.98	34 #
		6.60 - 6.91	Std. Stl., D.I. & PVC	FCA501 - 6.91						
		6.90 - 7.10	Cast Iron & PVC	FCA501 - 7.10						
		6.86 - 7.20	C.I. & A/C M.E.	FCA501 - 7.20						
	BLACK	7.15 - 7.35	A/C R.B.	FCA501 - 7.35						
		7.15 - 7.45	A/C R.B. CL. 200	FCA501 - 7.45						
10"	RED	7.80 - 8.10	O.D.	FCA501 - 8.10	1,483.20	1,658.71	2,030.43	2,407.64	250.75	58 #
		8.10 - 8.30	Riv. Stl.	FCA501 - 8.30						
		8.30 - 8.55	C.I. Soil, PVC Sewer	FCA501 - 8.55						
		8.55 - 8.75	Std. Stl. & PVC	FCA501 - 8.75						
	BLACK	8.60 - 9.06	Std. Stl., D.I. & PVC	FCA501 - 9.06						
		9.05 - 9.30	Cast Iron & PVC	FCA501 - 9.30						
12"	RED	8.99 - 9.40	C.I. & A/C M.E.	FCA501 - 9.40	1,640.87	1,913.70	2,857.06	3,172.86	307.91	70 #
		9.31 - 9.50	A/C R.B.	FCA501 - 9.50						
		9.51 - 9.70	A/C R.B. CL. 200	FCA501 - 9.70						
		9.80 - 10.10 A	O.D.	FCA501 - 10.10						
	BLACK	10.20 - 10.55 A	C.I. Soil, PVC Sewer	FCA501 - 10.55						
		10.70 - 11.00 A	Std. Stl. & PVC	FCA501 - 11.00						
16"	RED	10.89 - 11.40 B ^①	Std. Stl. & PVC	FCA501 - 10.80	2,309.02	N/A	2,589.61	3,084.45	526.72	137 #
		10.89 - 11.40 B ^②	Cast Iron & PVC	FCA501 - 11.40						
		11.55 - 11.75 B ^①	A/C M.E.	FCA501 - 11.75						
		11.76 - 12.12 B ^②	A/C R.B.	FCA501 - 12.12						
	BLACK	11.81 - 12.10 A	O.D. Stl.	FCA501 - 12.10						
		11.95 - 12.25 A	O.D. Stl. & PIP	FCA501 - 12.25						
16"	RED	12.24 - 12.50 A	PIP, PVC Sewer & Clay	FCA501 - 12.50	1,640.87	1,913.70	2,857.06	3,172.86	307.91	70 #
		12.65 - 12.95 A	Std. Stl. & PVC	FCA501 - 12.95						
		12.70 - 12.80 B	Std. Stl. & PVC	FCA501 - 12.80						
		13.15 - 13.55 B	Cast Iron & PVC	FCA501 - 13.55						
	BLACK	13.85 - 14.10 B	A/C M.E.	FCA501 - 14.10						
		14.05 - 14.40 B	A/C R.B.	FCA501 - 14.40						
RED	16.00	O.D. Stl.	FCA501 - 16.00							
	17.40	Ductile Iron & PVC	FCA501 - 17.40							

***NOTE:** Harness Lugs used with Romac FCA501s require longer flange and through bolts than what are provided as standard with 3" - 12" FCA501s. 10" FCA501s require special considerations. Contact Romac Engineering for more information.

- ① CANNOT be used with mating flanges that have threaded bolt holes.
- ② Less flange bolts/nuts.
- ③ See Page 4-3 for Details on Anchor Pins.



TO ORDER: Add the letter "P" to end of catalog number for FCA501 with anchor pins and "X" for less flange bolts.

EXAMPLE: FCA501- 5.00 P or FCA501- 5.00 X

FLANGED COUPLING



STYLE FCA501 PARTS LIST

NOM. PIPE SIZE	FLANGED BODY (w/ O-ring)	END RING	COUPLING GASKET	O-RING GASKET	FLANGE BOLTS WITH NUTS			THROUGH BOLTS WITH NUTS				
					NO: SIZE	PRICE EACH		NO: SIZE	PRICE EACH			
						STD.	304 SS		316 SS	STD.	304 SS	316 SS
3"	\$170.38	\$21.61 ¹	\$9.54 ¹	\$15.67	NA	NA	NA	NA	4: 5/8" x 7 1/2"	\$38.25	\$51.08	\$68.75
4"x 3"	338.64	30.42 ¹	12.55 ¹	15.67	4: 5/8" x 3" ²	7.54	33.88	34.22	4: 5/8" x 3" ²	7.54	23.54	29.12
4"	241.11	30.42 ¹	12.55 ¹	16.90	4: 5/8" x 3" ²	7.54	33.88	34.22	4: 5/8" x 7 1/2"	38.25	51.08	68.75
6"	245.72	64.39	17.85 ¹	17.93	4: 3/4" x 3 1/2" ²	9.91	35.6	38.18	4: 3/4" x 8"	57.09	73.83	39.67
8"	445.44	79.05	26.67 ¹	20.26	4: 3/4" x 3 1/2" ²	9.91	35.6	38.18	4: 3/4" x 8"	57.09	73.83	39.67
10"A	855.53	102.15	55.38 ¹	22.68	6: 7/8" x 4"	17.82	87.78	104.70	6: 5/8" x 7/8" x 9 1/2"	60.54	81.77	127.71
10"B	855.53	102.15	55.38 ¹	22.68	6: 7/8" x 4"	17.82	87.78	104.70	6: 5/8" x 7/8" x 9 1/2"	60.54	81.77	127.71
12"A	914.07	120.51	70.81 ¹	25.47	6: 7/8" x 4"	17.82	87.78	104.70	6: 7/8" x 9"	71.43	204.16	239.88
12"B	914.07	120.51	70.81 ¹	25.47	6: 7/8" x 4"	17.82	87.78	104.70	6: 7/8" x 9"	71.43	204.16	239.88
16"	1,561.34	348.35	173.81	29.60	NA	NA	NA	NA	12: 5/8" x 10 1/2" ³	18.80	42.19	83.42

¹ Parts are interchangeable with 501 couplings.

² STD is T-head, Stainless is Hex bolt.

³ Trackhead bolt for end ring only

Refer to page 4-2 for information on 10" and 12" center rings.

Stainless steel anchor pins available upon request.

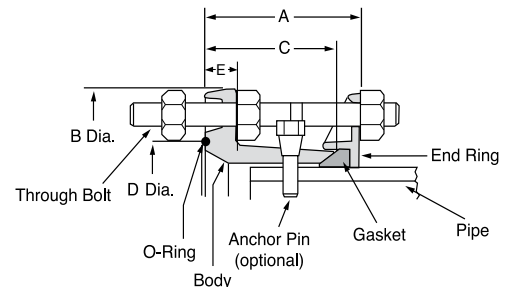
FCA501 ANCHOR PIN DETAILS

NOM. PIPE SIZE	PIPE O.D.	TOP OF GASKET RANGE	WORKING PRESSURE	TEST PRESSURE	STEEL ANCHOR PIN QTY	ANCHOR PIN SIZE (in)
3	3.00	3.29	175	260	2	1/2
	3.50	3.51	175	260	2	1/2
	4.00	4.00	175	260	2	1/2
4	4.00	4.05	175	260	4	1/2
	4.50	4.70	175	260	4	1/2
	4.80	4.81	175	260	4	1/2
6	6.00	6.10	175	260	4	5/8
	6.63	6.76	175	260	4	5/8
	6.90	6.91	175	260	4	5/8
8	8.00	8.10	175	260	4	7/8
	8.63	8.75	175	260	4	7/8
	9.05	9.06	175	260	2	7/8
10A	10.00	10.10	175	260	4	7/8
	10.75	11.00	175	260	3	7/8
10B	11.10	11.40	175	260	4	7/8
12A	12.00	12.10	175	260	4	7/8
	12.75	12.95	175	260	2	7/8
12B	13.20	13.55	175	260	4	7/8

NOTES:

- Pin quantities are for 12L14 steel pins. Contact Engineering for 316 S.S. pins.
- Contact Engineering for higher pressures.
- Anchor pins for use on cast iron, ductile iron and steel pipe only.
- Other sizes and configurations available. Contact Romac for more information.

FCA501 DIMENSIONS



NOM. PIPE SIZE	DIMENSIONS				
	A	B DIA.	C	D DIA.	E
3"	4 1/2"	7 1/2"	3 3/8"	4.66	0.63
4"x 3"	4 5/8"	7 1/2"	4 1/8"	4.30	0.75
4"	4"	9"	3 1/2"	6.00	0.94
6"	4 1/8"	11"	3 5/8"	7.90	1.06
8"	4 1/4"	13 1/2"	3 1/2"	10.00	1.14
10"A	5 1/4"	16"	4 1/4"	12.40	1.24
10"B	5 1/2"	16"	4 1/2"	12.40	1.23
12"A	5 1/4"	19"	4 1/2"	13.68	1.25
12"B	5 1/2"	19"	4 1/2"	15.20	1.27
16"	8"	23 1/2"	7"	18.88	1.50



Flexible couplings do not provide protection against possible pullout of pipe ends in unrestrained conditions.

FUSION EPOXY STYLE FCA501 PARTS LIST



NOM. PIPE SIZE	FLANGED BODY (w/ O-ring)	END RING	COUPLING GASKET ⁴	O-RING GASKET	FLANGE BOLTS WITH NUTS			THROUGH BOLTS WITH NUTS				
					NO: SIZE	PRICE EACH		NO: SIZE	PRICE EACH			
						STD.	304 SS		316 SS	STD.	304 SS	316 SS
3"	\$214.59	\$33.55 ¹	N 43.44 ¹ E 44.14 ¹	N 15.45 E 30.90	N/A	N/A	N/A	N/A	4: 5/8" x 7 1/2"	\$38.25	\$51.08	\$68.75
4"	281.30	44.62 ¹	N 44.11 ¹ E 45.29 ¹	N 16.68 E 33.26	4: 5/8" x 3" ²	7.54	33.88	34.22	4: 5/8" x 7 1/2"	38.25	51.08	68.75
8"	515.43	102.31	N 62.62 ¹ E 70.38 ¹	N 19.98 E 39.96	4: 3/4" x 3 1/2" ²	9.91	35.60	38.18	4: 3/4" x 8"	57.09	73.83	39.67
10"B	986.70	124.34	N 87.43 ¹ E 101.81 ¹	N 22.36 E 44.72	6: 7/8" x 4"	17.82	87.78	104.70	6: 5/8" x 7/8" x 9 1/2"	60.54	81.77	127.71
12"B	1,076.54	143.12	N 109.24 ¹ E 126.79 ¹	N 24.01 E 48.02	6: 7/8" x 4"	17.82	87.78	104.70	6: 7/8" x 9"	71.43	204.16	239.88

¹ Parts are interchangeable with 501 couplings.

² T-head bolts.

³ Trackhead bolt for end ring only.

⁴ "N" indicates an NBR gasket, "E" indicates an EPDM gasket.

Refer to page 4-2 for information on 10" and 12" center rings.

Stainless steel anchor pins available upon request.

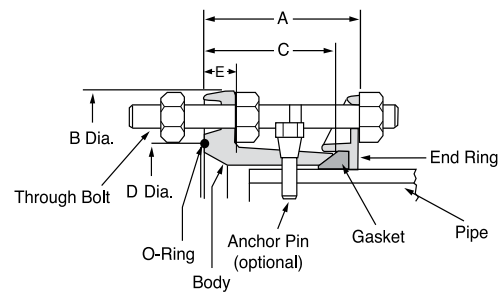
FCA501 ANCHOR PIN DETAILS

NOM. PIPE SIZE	PIPE O.D.	TOP OF GASKET RANGE	WORKING PRESSURE	TEST PRESSURE	STEEL ANCHOR PIN QTY	ANCHOR PIN SIZE (in)
3	3.00	3.29	175	260	2	1/2
	3.50	3.51	175	260	2	1/2
	4.00	4.00	175	260	2	1/2
4	4.00	4.05	175	260	4	1/2
	4.50	4.70	175	260	4	1/2
	4.80	4.81	175	260	4	1/2
6	6.00	6.10	175	260	4	5/8
	6.63	6.76	175	260	4	5/8
	6.90	6.91	175	260	4	5/8
8	8.00	8.10	175	260	4	7/8
	8.63	8.75	175	260	4	7/8
	9.05	9.06	175	260	2	7/8
10A	10.00	10.10	175	260	4	7/8
	10.75	11.00	175	260	3	7/8
10B	11.10	11.40	175	260	4	7/8
12A	12.00	12.10	175	260	4	7/8
	12.75	12.95	175	260	2	7/8
12B	13.20	13.55	175	260	4	7/8

NOTES:

1. Pin quantities are for 12L14 steel pins. Contact Engineering for 316 S.S. pins.
2. Contact Engineering for higher pressures.
3. Anchor pins for use on cast iron, ductile iron and steel pipe only.
4. Other sizes and configurations available. Contact Romac for more information.

FCA501 DIMENSIONS



NOM. PIPE SIZE	DIMENSIONS				
	A	B DIA.	C	D DIA.	E
3"	4 1/2"	7 1/2"	3 3/8"	4.66	0.63
4"x 3"	4 5/8"	7 1/2"	4 1/8"	4.30	0.75
4"	4"	9"	3 1/2"	6.00	0.94
6"	4 1/8"	11"	3 5/8"	7.90	1.06
8"	4 1/4"	13 1/2"	3 1/2"	10.00	1.14
10"A	5 1/4"	16"	4 1/4"	12.40	1.24
10"B	5 1/2"	16"	4 1/2"	12.40	1.23
12"A	5 1/4"	19"	4 1/2"	13.68	1.25
12"B	5 1/2"	19"	4 1/2"	15.20	1.27
16"	8"	23 1/2"	7"	18.88	1.50



Flexible couplings do not provide protection against possible pullout of pipe ends in unrestrained conditions.

FLANGED COUPLING