

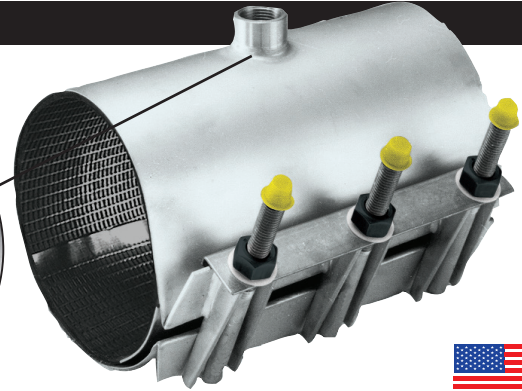
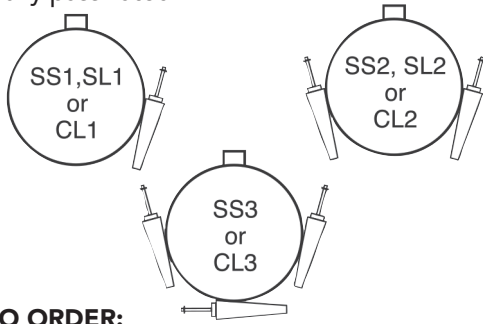
# TAPS FOR REPAIR CLAMPS

## SS1, SS2, SS3, SL1, SL2, CL1, CL2, AND CL3



### AVAILABLE IN ALL STYLES

The same design, construction, and installation features as Styles 1, 2, and 3. Tapped outlet is 304 stainless steel, permanently "fused" by GTAW, and fully passivated<sup>1</sup>.



SS1-7.00 x 12 x 3/4" IP TAPPED REPAIR CLAMP

NSF61 certified upon request.

MEETS AWWA C800

**TO ORDER:**

1. Select size, length, and style of clamp.
2. Select size and type of tapped thread desired from the table below.
3. Add list price for tap to the list price of clamp selected from separate price sheet.
4. **Tapped outlet products are NO CANCEL/NO RETURN** items, please be specific when ordering.

**EXAMPLE:** SS1-7.00 x 12 x 3/4" IP would be a one-section clamp for pipe with an O.D. between 6.60 and 7.00, a length of 12" and 3/4" iron pipe tap size.

**ADD-ON LIST PRICES FOR TAPPED CLAMPS**

TAP SIZE	TYPE OF THREAD	MINIMUM PIPE O.D.	MINIMUM CLAMP LENGTH	ADD ON LIST PRICE
1/2" <sup>4</sup>	IP	2.38"	6" for 2.38" through 14.65" pipe O.D. 8" for 14.66" through 19.50" pipe O.D.	\$105.14
3/4" or 1"	CC or IP	2.38"	6" <sup>5</sup> for 2.38" through 14.65" pipe O.D. 8" <sup>5</sup> for 14.66" through 19.50" pipe O.D.	105.14
1 1/4"	CC	3.50"	8" for 3.50" through 8.00" pipe O.D. 10" for 8.01" through 14.65" pipe O.D. 12" for 14.66" through 19.50" pipe O.D.	164.80
1 1/4"	IP	2.88"	8" for 2.88" through 8.00" pipe O.D. 10" for 8.01" through 14.65" pipe O.D. 12" for 14.66" through 19.50" pipe O.D.	164.80
1 1/2"	CC or IP	3.50"	8" for 3.50" through 8.00" pipe O.D. 10" for 8.01" through 14.65" pipe O.D. 12" for 14.66" through 19.50" pipe O.D.	164.80
2"	IP	3.50"	8" for 3.50" through 8.00" pipe O.D. 10" for 8.01" through 14.65" pipe O.D. 12" for 14.66" through 19.50" pipe O.D.	164.80
2"	CC	4.50"	8" for 4.50" through 8.00" pipe O.D. 10" for 8.01" through 14.65" pipe O.D. 12" for 14.66" through 19.50" pipe O.D.	201.78
2 1/2" <sup>2, 4</sup>	IP or MIP	6.63"	12" for 6.63" through 14.65" pipe O.D. 16" for 14.66" through 19.50" pipe O.D.	466.05
3" <sup>2, 3, 4</sup>	IP or MIP	6.63"	12" for 6.63" through 14.65" pipe O.D. 16" for 14.66" through 19.50" pipe O.D.	466.05

<sup>1</sup> Passivated: Chemically treated after welding to produce a highly corrosion-resistant coating.

<sup>2</sup> Requires SS2 or SS3

<sup>3</sup> 6.63 - 9.99 Taps must be MIP

<sup>4</sup> Not available with CL clamps.

<sup>5</sup> CL clamps 8.35 and larger with outlets less than or equal to 1" have a minimum clamp length of 7.5".

<sup>6</sup> For SS2 Clamps with 1 1/4" to 2" tap size, max pipe O.D. for 8" clamp is 7.99", minimum pipe O.D. for 10" is 8.00".

<sup>7</sup> Tapped CL1 clamps are available in sizes 3.70 and larger.

<sup>8</sup> CL1 clamps with 2" CC or IP tap must be at least 4.85".

<sup>9</sup> For 1 1/4" tap size & minimum pipe OD 2.88, SS1 clamps must be at least 3.12".

REPAIR CLAMPS