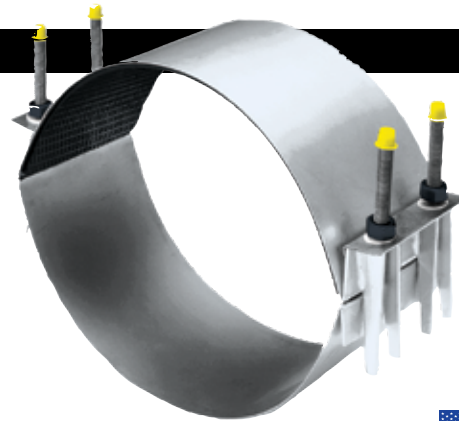


STYLE CC DOUBLE SECTION REPAIR CLAMPS



MATERIAL SPECIFICATIONS

- SHELLS AND LUGS:** Stainless steel per ASTM A 240, type 304.
- BOLTS:** UNC rolled thread, stainless steel per ASTM A 193, type 304.
- NUTS:** Stainless steel per ASTM A 194, type 304.
- WASHERS:** Stainless steel per ASTM A 240, type 304 and plastic lubricating washers.
- GASKETS:** NBR (Buna-N) per ASTM D 2000 MBK 610, compounded for water and sewer services. Other compounds available on request.



REPAIR CLAMPS



NSF61 certified upon request.

**MEETS
AWWA C230**



CC-1275 X 6" REPAIR CLAMP

NOM. PIPE SIZE	PIPE O.D. (INCHES)	CATALOG NUMBER	LIST PRICE / APPROX. WEIGHT (lbs.)	
			6"	12"
10"	10.00	CC-1000 x length	\$232.08 8.3#	\$473.68 14.0#
10"	10.75	CC-1075 x length	239.23 8.5#	488.01 14.4#
12"	12.00	CC-1200 x length	244.01 8.8#	508.77 15.0#
12"	12.75	CC-1275 x length	255.89 9.0#	517.70 15.4#
14"	14.00	CC-1400 x length	267.79 9.3#	535.55 16.0#
16"	16.00	CC-1600 x length	288.64 9.8#	577.27 17.0#
18"	18.00	CC-1800 x length	303.47 10.3#	606.98 18.0#
20"	20.00	CC-2000 x length	321.32 10.9#	642.71 19.3#
22"	22.00	CC-2200 x length	342.19 11.4#	684.34 20.3#
24"	24.00	CC-2400 x length	357.03 11.9#	714.11 21.3#
30"	30.00	CC-3000 x length	419.50 13.5#	839.09 24.3#

NUMBER OF BOLTS PER CLAMP LENGTH		
OD RANGE	6"	12"
All Ranges	4	6

TO ORDER: Specify catalog number x length of clamp desired.

EXAMPLE: For a "CC" style clamp for 12" Std. Stl. pipe with clamp length of 6", order **CC-1275 x 6"**