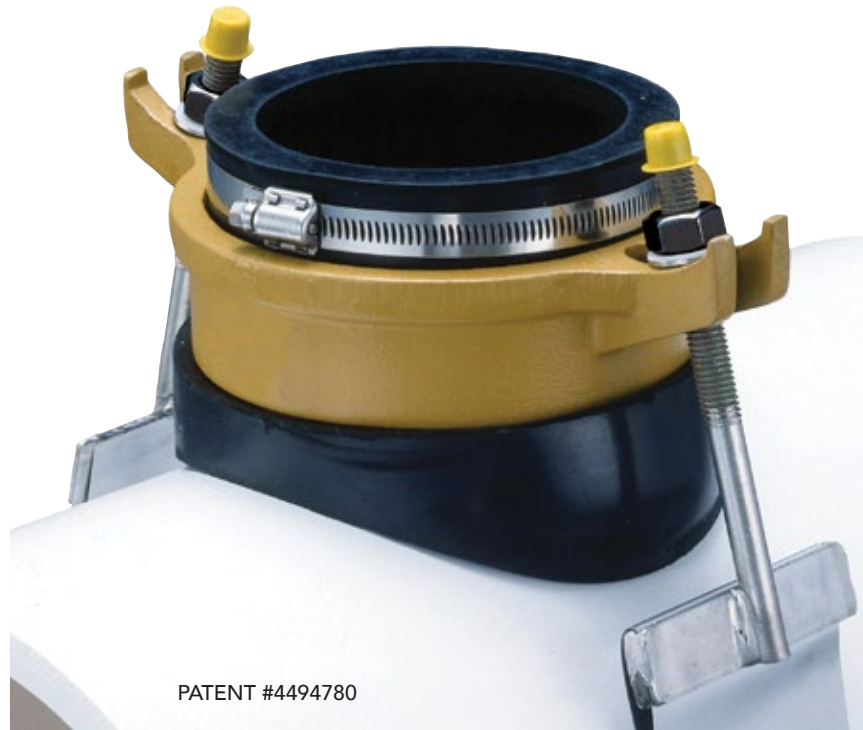


A ROMAC ORIGINAL

- 1981 -



DESIGN ADVANTAGES:

- **INVENTORY REDUCTION:** Unique gaskets fit wide range of diameters.
- **EASE OF INSTALLATION:** Saddle can be installed by unskilled labor, using a socket or open end wrench. Built-in stop prevents blockages due to inadvertant insertion of branch into main.
- **SUPERIOR STRAP:** Strong 304 stainless steel band GMAW & GTAW welded to roll threaded 304 stainless bolts adjusts over a wide range. Clamping force is well distributed by 3 1/2" width.
- **FLEXIBILITY:** Gasket allows considerable deflection due to earth movement, while large sealing surface and wide band strongly resist displacement.
- **RELIABILITY:** Continuous rubber connection between rim and branch eliminates potential leak spots. Saddles have been tested to pressures well in excess of typical service test requirements.

NOTE: A pipe stop capable of withstanding 1000 pounds of thrust is molded into the CB saddle gasket. Care must be taken during system design and installation to assure that this thrust limit is not exceeded.

DETAIL SPECIFICATIONS FOR ROMAC "CB"™ SEWER SADDLES

ROMAC
INDUSTRIES, INC.



ADJUSTABLE STRAP

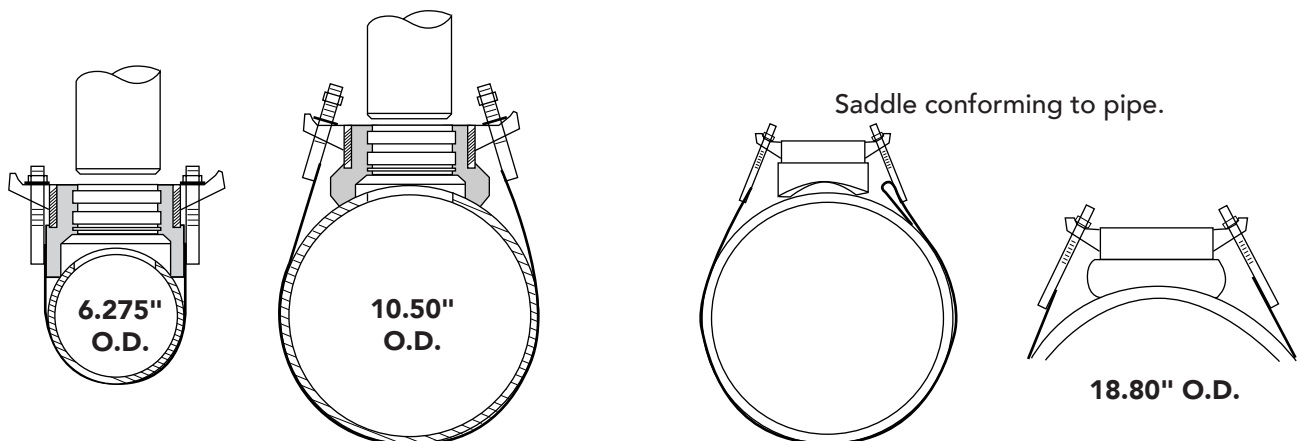
304 stainless steel band accommodates a wide range of pipe sizes. The stainless welds are fully passivated (chemically treated after welding to produce a highly corrosion resistant coating). The wide strap distributes the clamping force across the 3 1/2" width.

GASKET

SBR per ASTM D2000 MBA 710, compounded for water and sewer service. Gaskets are especially formulated with antioxidant/antiozonant agent to increase shelf life.

SADDLE CASTING

Ductile iron per ASTM 536, Grade 65-45-12. Protected with a yellow corrosion-resistant paint.



Saddle conforming to pipe.

Same saddle conforming to different outside diameters.

18.80" O.D.



STYLE "CB"™ SEWER SADDLE

MATERIAL SPECIFICATIONS

CASTINGS: Ductile iron per ASTM 536, Grade 65-45-12. Protected with a yellow shopcoat.

ADJUSTABLE STRAP: 3 1/2" wide, stainless steel per ASTM A240, type 304.

BOLTS: 1/2" UNC rolled thread, 304 stainless steel.

NUTS: Stainless steel per ASTM A194, type 304. Coated to prevent galling.

WASHERS: Stainless steel, type 304 and plastic lubricating washers.

GASKET: SBR per ASTM D2000 MBA 710, compounded for water and sewer service. Other compounds available on request.



CB-4.80UN
PATENT #4494780



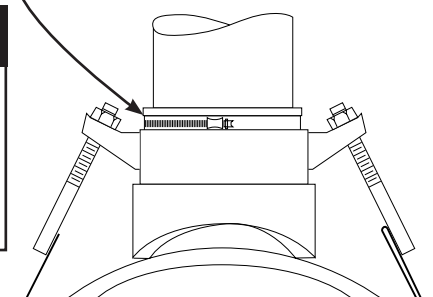
NOM. BRANCH SIZE	NOM. PIPE SIZE	RANGE	BRANCH TYPE	BRANCH O.D.	CATALOG NUMBER	LIST PRICE	ADD-ON EPOXY	APPROX. WEIGHT (lbs.)
4"	6" - 12" 48" strap	26.27 - 14.40 Regular Gasket	PVC Sewer	4.215	CB-4.215	\$218.20		10 #
			Tyseal	4.28	CB-4.28			
			C.I. Soil-No Hub	4.38	CB-4.38			
			PVC	4.50	CB-4.50			
			Universal ¹	4.20 - 4.80	CB-4.80UN ¹			
			Clay ¹	5.00 - 5.38	CB-5.38 ¹			
	14" - 24" 96" strap	14.40 - 25.80 Large O.D. Gasket	PVC Sewer	4.215	CB-4.215LS	277.47	\$66.37	11 #
			Tyseal	4.28	CB-4.28LS			
			C.I. Soil-No Hub	4.38	CB-4.38LS			
			PVC	4.50	CB-4.50LS			
			Universal ¹	4.20 - 4.80	CB-4.80UNLS ¹			
			Clay ¹	5.00 - 5.38	CB-5.38LS ¹			
	24" - 48" 192" strap	25.80 - 54.00 Large O.D. Gasket	PVC Sewer	4.215	CB-4.215XLS	514.98		13 #
			Tyseal	4.28	CB-4.28XLS			
			C.I. Soil-No Hub	4.38	CB-4.38XLS			
PVC			4.50	CB-4.50XLS				
Universal ¹			4.20 - 4.80	CB-4.80UNXLS ¹				
Clay ¹			5.00 - 5.38	CB-5.38XLS ¹				
6"	8" - 12" 48" strap	28.00 - 14.40 Regular Gasket	PVC Sewer	6.27 - 6.30	CB-6.30	290.88		12 #
			C.I. Soil-No Hub	6.27 - 6.66	CB-6.66UN ¹			
			Universal ¹	6.27 - 6.66	CB-6.66UN ¹			
			Cast Iron-D.I.	6.90	CB-6.90			
	14" - 24" 96" strap	14.40 - 25.80 Large O.D. Gasket	PVC Sewer	6.27 - 6.30	CB-6.30LS	347.34	100.38	13 #
			C.I. Soil-No Hub	6.27 - 6.66	CB-6.66UNLS ¹			
			Universal ¹	6.27 - 6.66	CB-6.66UNLS ¹			
			Cast Iron-D.I.	6.90	CB-6.90LS			
			Clay ¹	7.19 - 8.00	CB-8.00LS ¹			
	24" - 48" 192" strap	25.80 - 54.00 Large O.D. Gasket	PVC Sewer	6.27 - 6.30	CB-6.30XLS	584.86		15 #
			C.I. Soil-No Hub	6.27 - 6.66	CB-6.66UNXLS ¹			
			Universal ¹	6.27 - 6.66	CB-6.66UNXLS ¹			
			Cast Iron-D.I.	6.90	CB-6.90XLS			
			Clay ¹	7.19 - 8.00	CB-8.00XLS ¹			

¹ CB Sewer Saddles for Universal and Clay pipe include stainless steel hose clamp.

² Regular gaskets are NOT interchangeable with large gaskets.

BRANCH SIZE	SIZE	GASKET	SADDLE CASTING	SLIDING BOLT	HOSE CLAMP ¹	STRAP
4"	6 - 12"	\$71.13	\$76.51	\$26.01	\$21.15	REG (48")
	14 - 24"	97.02				103.93
	24 - 48"	97.02				
6"	8 - 12"	125.26	95.05	26.01	22.51	XLS (192")
	14 - 24"	148.35				341.46
	24 - 48"	148.35				

STAINLESS STEEL HOSE CLAMP
SUPPLIED FOR UNIVERSAL GASKET



TO ORDER: Specify catalog number.

EXAMPLE: To fit 4" branch to 6" -12" nominal pipe with branch 4.20 - 4.80, order **CB-4.80UN**